

## RADAR



Radar Sensor  
DRS4DL+/DRS4D-NXT  
DRS6A/12A/25A-NXT  
DRS6A/12A/25A X-Class

# NavNet TZtouch3 Network/Products Lineup



## AUTOPILOT



AutoPilot  
NAVpilot-300



AutoPilot  
NAVpilot-71C

## FISH FINDER



External Fish Finders can also be connected to TZtouch3. You can select which one to use from the settings menu.



Fish Finder  
DFF1-UHD/DFF3

Bottom Discrimination Fish Finder  
BBDS1

Multi Beam Sonar  
DFF-3D

TruEcho CHIRP™ 2/3kW Amp  
DI-FFAMP

## AIS



AIS Receiver  
FA-40

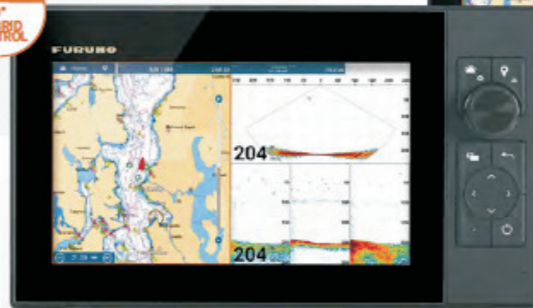


Class-B AIS Transponder  
FA-70



Class-A AIS Transponder  
FA-170

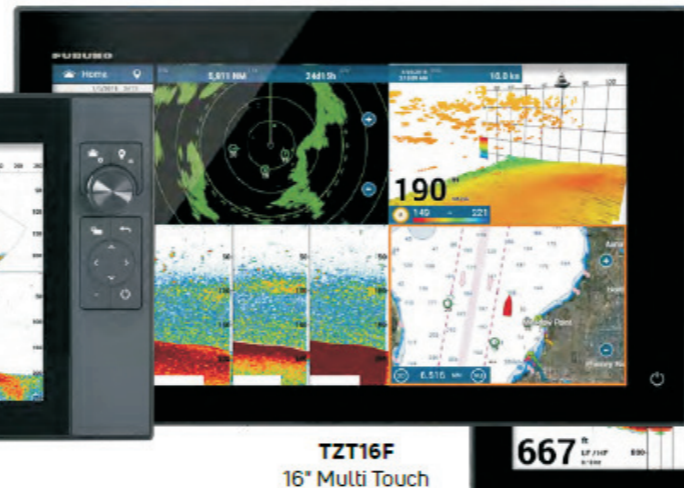
NEW!  
9" HYBRID CONTROL



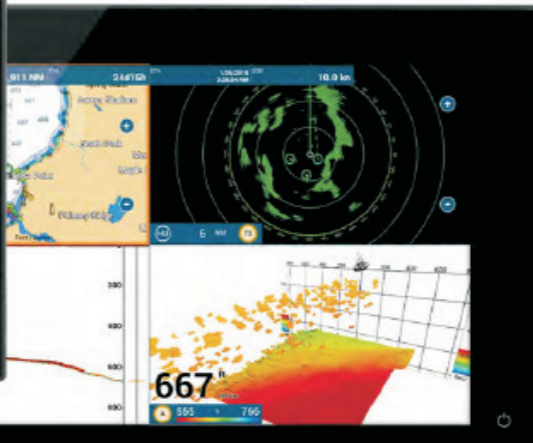
**TZT9F**  
9" Hybrid Control



**TZT12F**  
12" Hybrid Control



**TZT16F**  
16" Multi Touch



**TZT19F**  
19" Multi Touch

## WEATHER/ PC PLOTTER



TZ PC Software



Network Weather  
Facsimile Receiver  
FAX-30



Network Satellite Weather  
and Radio Receiver  
BBWX4

## OTHERS

NavNet Command Center  
3rd Party Compatible Apps (v1.07\*)



Marine Entertainment System  
Fusion APOLLO Series, etc.



IP Camera



Analog Camera



Thermal Camera



Digital Switching System



Internal GPS Antenna  
TZT9F/TZT12F/TZT16F



Internal 1kW TruEcho CHIRP™ Fish Finder\*  
\*Dual Channel for TZT12F/TZT16F/TZT19F only. Single Channel for TZT9F only



NavNet TZtouch3 is NMEA 2000 certified. NMEA2000 offers improved data transfer rates and true plug-and-play operation.

### Interface Connection Legend

- Ethernet Ethernet 100 Base-T Connection
- CAN bus Can bus or NMEA2000 Connection
- NMEA0183 NMEA0183 Connection
- Video Video Connection
- Analog Analog Connection
- USB USB Connection

\*3 220WX available only in U.S. and Canada. \*4 Requires IPNMEA-IF Data Converter.

## COMPASS



Integrated Heading Sensor  
PG-700



Satellite Compass  
SCX-20



Satellite Compass  
SC-33



Satellite Compass  
SC-70

## GPS



GPS/WAAS  
Receiver Antenna  
GP-330B



GPS Navigator  
GP-33



External GPS antennas & navigators can also be connected to TZtouch3. You can select which one to use from the settings menu.

## SENSOR



Ultrasonic Weather Station  
220WX



Depth/Speed/Temp Sensor  
DST-800 & other smart sensors for depth/speed/temp

## INSTRUMENT



Wind Transducer - Analog  
FI-500/L



Instrument  
FI-70

## CONVERTER



NMEA Data Converter  
IF-NMEA2K2



Analog NMEA Data Converter  
IF-NMEAIF

\*1 Optionally connect a 5kW or 10kW transducer to DI-FFAMP using BT-5; DI-FFAMP not compatible with TZT9F.  
\*2 SiriusXM weather coverage is currently available only in U.S. and Canada. SiriusXM subscription required.

## OPTION



Remote Control Unit  
MCU-004



Remote Control Unit  
MCU-002



Keyboard  
MCU-005



SD Card Unit  
SDU-001