



Cactus™

Navigation & Communication

MARINE ELECTRONICS BUYER'S GUIDE 2006

YOU'VE NEVER HAD IT SO GOOD!

Legendary Furuno quality has never been so affordable

HOT PRODUCTS FOR 2006!!!



RAYMARINE E SERIES
Now with Platinum cartography!



NAVMAN G-PILOT 3380
Innovative colour gyro autopilot



NAVMAN 8120 12in COMBI
Navman go large!

PLUS THE VERY LATEST IN-

- Chartplotters
- Instruments
- Fishfinders
- Radar
- Navigation software
- Handheld GPS
- Autopilots
- VHF & Satcoms
- Electronic charts
- And much more...



OVER 500 TOP PRODUCTS INSIDE! GET THE LATEST PRICES NOW AT WWW.CACTUSNAV.COM

PLATINUM -vs- MAX



Navionics and C-Map square up in the enhanced cartography wars - who will come out on top?

ALL GOOD THINGS...



Icom finally unveil their UK type approved SSB - check it out inside

SURF'S UP!



Thuraya's new satellite DSL internet system is fast and affordable

THIS SEASON'S LOOK



ST60, the world's best selling instrument system gets a makeover!

WHY BUY FROM CACTUS?



MORE CHOICE

- FACT -You will not find a mail order catalogue with more brands than Cactus.
- Cactus represent more marine electronics manufacturers.
- That means we are the company who can provide genuine expert advise.



MORE KNOWLEDGE

- Our senior sales people have a minimum of 10 years experience selling marine electronics.
- They have also installed the kit so they can you tell everything you need to consider. Few companies can match our impressive expertise.



WHY NO PRICES?

People often ask why we don't print prices in our Buyer's Guide, the reason is simple -

- The Buyer's Guide comes out once a year, but prices change daily.
- At any one time there will be a number of special offers or mega deals on particular items.
- Some of our suppliers don't like us advertising low prices as it upsets the other dealers who don't have our volume and can't compete!
- We can provide you with our complete price list as an Acrobat PDF file on request - for the latest prices and details of special offers,
 - **email us** on sales@cactusnav.com or
 - **call us** on 020 7493 1115



OWNER OR CACTUS INSTALLATION

- Most items we sell are suitable for owner installation depending on your level of expertise, but if you don't have the time or inclination then let us do it for you.
- We have engineers in most areas along the south coast and our rates our highly competitive.
- Don't think because we are in London we are more expensive than the local guy - in most cases we are actually cheaper!



CACTUS AV

- At Cactus we don't just sell marine electronics, we are also a major supplier and installer of multi-cabin onboat and in-home entertainment systems.
- We can supply anything from a simple stereo to a complete home cinema system with plasma displays, surround sound and DVD player.
- Describe your dream system to us and we will be happy to design the installation and quote a full package price
- We can supply at a price that is competitive with High Street stores, so don't settle for somewhere that is just happy to sell you a box - come to Cactus and we will give you the complete service.
- For more information or a copy of our latest CactusAV brochure, call us on the telephone number below or log onto www.cactusAV.com.



CACTUS MEGADEALS

During 2005 we starting running our popular Megadeals, where we slashed the prices of some of the most sought after marine electronics products (eg Raymarine RL80CRC complete with GPS, recommended retail price = £4325.95. Cactus Megadeal price = **£1049.95!**). These deals have been such a success that we will be continuing to run similar deals throughout 2006 - keep an eye on our ads in the yachting press and online at www.cactusnav.com.

I hope that you will find our buyer's guide a useful aid in helping you make your equipment selection, and look forward to being of service to you in the coming season.

Happy Boating

Andrew Smythe
Managing Director

 CACTUS IS AN AUTHORISED
LINN CUSTOM INSTALL DEALER



By Manufacturer

ACR	29
C-Map	36-39
Echopilot	33
Entel	29
Furuno	23-25
Garmin	12-18
Icom	44-45
Iridium	46
Lowrance	30
Magellan	22
MaxSea	41
McMurdo	31
MOBi-Lert	29
NASA	28
Navionics	34-35
Navman	19-21
Nobeltec	40
Raymarine	3-11
Scanstrut	32
SeaMe	32
Silva	30
Simrad	26-27
Standard Horizon	42-43
Thrane & Thrane	46
Thuraya	46
V-Tronix	44



By Product

Active Radar Reflector	32
AIS	28
Antenna Brackets	32
Autopilots - Cockpit	6,26
Autopilots - Inboard	6-8,19,24,27
Cartography	18,22,34-39
Chartplotters	3-5,11,12-16,19,22,24-26,30,43
Combi Units	3-5,11,15,16,19,24-26,30,43
Fishfinders	3-5,15-17,23,24-26,30,43
Fuel Monitoring	21
EPIRBs	29,31
Forward Looking Sounders	33
GPS - Fixed	13,24
GPS - Handheld	12,13,22
Instruments	9,20,23,28,30
In-Car Navigation	13
Man Overboard Monitors	29
Navtex	23,28,31
PC Software	11,25,34,36,40,41
PC Systems & Peripherals	11,40,44
PLBs	29,31
PMR Radios	44
Radars	3-5,11,16,23,25,26,40
SARTs	31
Satcoms	46
Satellite Compass	24
Satellite TV	10
Satellite Internet	46
SSB Radios	28,45
VHF - Fixed	3,10,18,22,24,25,30,42,45
VHF - Handheld	3,29,42,44
Weather Equipment	28
Weatherfax	25

Product Colour Code Key

■	Navigation Equipment
■	Autopilots
■	Instruments
■	Communications
■	Echosounders/Fishfinders
■	Electronic Cartography

RAYMARINE A65

6.5in Colour Chartplotter/Fishfinder



NEW FOR 2006

HOT PRODUCT!!

A new compact, yet powerful dual function display, combining simplicity with advanced chartplotting. On its own it's a colour Navionics XL3 Gold chartplotter, but by simply adding the DSM25 Digital Sounder module and an appropriate transducer it is transformed into a full function chartsounder with split screen display.

KEY FEATURES

- 6.5in sunlight viewable wide angle colour display
- Rugged submersible construction (IPX7 standard)
- Console mount option
- NMEA input/output

SUPPLIED WITH

12 channel WAAS differential GPS, power & interface cable, mounting bracket

- Head up, chart up, north up display options
- Fast chart screen redraw
- 1000 waypoints, 50 routes
- Optional Compact Flash memory expansion

ORDER CODE - ZRAYE33022

RAYMARINE RAY54E

DSC VHF Radio



Submersible DSC VHF. The large LCD features a 4 line GPS display. 1 or 25 watt output, external speaker output. Also available in white.

KEY FEATURES

- All channel scan, tri-watch
- DSC number directory
- Flush mountable

ORDER CODE - ZRAYE43025



RAYMARINE RAY101E

Handheld VHF Radio



Supplied with NiMH batteries, but takes standard alkaline batteries as well in the same waterproof battery tray. All standard VHF functions including scan and dual watch.

KEY FEATURES

- High clarity backlight display
- Large easy to use backlit keypad
- Key lock function

SUPPLIED WITH

Charger, 6 x NiMH cells, mains adaptor, cigarette lighter adaptor, wrist strap and belt clip

ORDER CODE - ZRAYT43029

RAYMARINE DSM25

HD Digital Sounder Module

Designed exclusively for the A65 chartplotter, this 500 watt digital sounder module features the same award winning digital technology used on the top of the range DSM300 (see page 4).



KEY FEATURES

- Plug & Play
- 50/200kHz dual frequency
- Submersible to IPX7 standard
- Transforms the A65 into a full function combination chartplotter/digital fishfinder
- HD Digital technology virtually eliminates clutter
- Adaptive receiver technology precisely targets fish and bottom structure with amazing clarity

SUPPLIED WITH

Transducers must be specified - wide range of options (see page 4 for details)

ORDER CODE - ZRAYE63070

RAYMARINE DS400X

3.5in Colour Digital Fishfinder

Compact but powerful dual frequency digital fishfinder representing the next generation in fishfinders, featuring Raymarine's innovative HD Digital technology.



KEY FEATURES

- 200/50kHz
- Max depth 600m
- Automatic parameter adjustment (220 per second)
- HD Digital technology virtually eliminates clutter
- Adaptive receiver technology precisely targets fish and bottom structure with amazing clarity

ORDER CODE - ZRAYE63055

RAYMARINE DS500X

5in Colour Digital Fishfinder

The DS500X offers all the features of the DS400X fishfinder, but with a larger 5in colour display.



ORDER CODE - ZRAYE63057

RAYMARINE DS600X

6in Colour Digital Fishfinder

Enjoy the powerful features of the DS400X and DS500X fishfinders with a large clear 6in display.



SUPPLIED WITH (ALL MODELS)

Depth & speed transom mount transducer

ORDER CODE - ZRAYE63059

Also consider...

Navigation Displays -

- Garmin page 16
- Navman page 19
- Simrad page 26

RAYMARINE RC400

Portable 3.5in Colour Chartplotter

With a superb daylight viewable colour LCD display and a 12 channel dGPS receiver, this compact little chartplotter uses Navionics Gold cartography and has an inbuilt coastline map.

KEY FEATURES

- Intuitive and easy to use
- Unlimited waypoint, route and track storage
- Operates on NiMH or AA alkaline batteries, or from the boat's 12v supply
- NMEA interface

SUPPLIED WITH

Adjustable tilt cradle, protective pouch



ORDER CODE - ZRAYE33018

RAYMARINE C120

12.1in Colour Combi Display



Superb single station multifunction navigation display with a 12.1in high resolution 256 colour daylight viewable screen. The C-Series brings all aspects of navigation into one location, acting as a central hub and giving total navigation control from a single station - chart, instrument, autopilot, GPS, and fishfinder. Screen configuration is simple and the screen can be split to display multiple information sources simultaneously.

On its own, the C120 is a powerful chartplotter, using the latest Navionics XL3 Gold charts. The SeaTalk and NMEA ports enable it to be easily connected to autopilots, instruments, DSC VHF radios and more. To unlock the real power of the C120, simply add plug in a radar antenna and/or the DSM300 digital sounder module and the C120 becomes a multifunction combination display - chart, radar and echosounder.

Despite all these features, the C120 is surprisingly simple and intuitive to use, thanks to its five softkeys that guide you through the functions. Even entering waypoint and route names is quick and easy using the innovative twist and click rotary knob.

KEY FEATURES

- Direct sunlight viewable 256 colour display
- Excellent contrast and wide viewing angle
- Compact flash memory gives unlimited storage
- Uses Navionics Gold cartography
- True and relative motion options
- User configurable custom windows option
- Auto Range changes chart scale to keep vessel and waypoint on the same screen while underway
- Radar, SeaTalk, SeaTalk2 and Digital Sounder module inputs
- NMEA input and output
- Radar chart overlay option

SUPPLIED WITH

Power & interface lead, mounting bracket.

ORDER CODE - ZRAYE02022

RAYMARINE C80

8.4in Colour Combi Display



If you want to enjoy the benefits of having a C Series on board but your budget doesn't stretch to the C120, then consider the C80, which offers all the power, features and fantastic sunlight-view split screen display but in a smaller 8.4in package.

ORDER CODE C80 - ZRAYE02020

RAYMARINE C70

6.5in Colour Combi Display



This is the perfect solution for owners of smaller boats who don't want to settle for less when it comes to features - the C70 manages to pack in all the functions of its bigger brothers into a compact unit with a 6.5in sunlight-view 256 colour split screen display.

ORDER CODE C80 - ZRAYE02018

RAYMARINE DSM300

HD Digital Sounder Module

The DSM300 adds HD Digital sounder technology to the C and E Series combi displays. Choose from a wide range of transducers to suit most applications (see below).



NEW FOR
2006

KEY FEATURES

- 600 or 1000 Watt operation depending on choice of transducer
- 50/200kHz dual frequency
- Submersible to IPX7 standard
- hsb2 networking compatible with "Plus" series radars, chartplotters and fishfinders
- HD Digital technology virtually eliminates clutter
- Auto Adaptive Gain control - no adjustment required
- Digitally Adaptive Transmitter Receiver with infinite receiver bandwidth settings and digital filter
- A-Scope (Real-Time Display): Split second real time representation of fish and bottom features
- Auto or manual zoom (x2, x4 or x6)
- Bottom lock and white line

SUPPLIED WITH

Transducers must be specified. If fitting to an E Series a SeaTalk_{hs} crossover coupler or SeaTalk_{hs} Network Switch is required

ORDER CODE - CALL FOR DETAILS



Tech info

Raymarine Echosounder Transducers

Suitable for the DSM25 and DSM300

Digital Sounder Module and most Raymarine stand-alone fishfinders (except A Series).

P319	Plastic thru hull 600W, 50/200kHz Depth only	
B744V	Bronze thru hull 600W, 50/200kHz Depth, speed, temp Also available with long stem B744VL (shown)	
P66	High speed transom mount 600W, 50/200kHz Depth, speed, temp	
P79	Adjustable in-hull 600W, 50/200kHz Depth only	
SS555	Stainless steel thru hull 600W, 50/200kHz Depth only	
B256	Bronze thru hull high perf 1000W, 50/200kHz Depth, temp	
B260	Bronze thru hull v high perf 1000W, 50/200kHz Depth, temp	

RAYMARINE PATHFINDER

Radar Scanners

When adding radar to your C or E series you have your choice of radome or open array scanners, all of which deliver unparalleled performance.

KEY FEATURES

- Compatible with any C or E Series display
- Lower receiver noise figure (less than 5 dB) for more efficient target echo reception
- Auto GST Fully automatic Gain, Sea Clutter and Tune Control for hands off operation and optimum performance
- Advanced microprocessor controlled transmitter receiver features 8 Pulse width/PRF settings, providing enhanced targets returns though every range scale



RADOME KEY FEATURES

- Choice of 2Kw (18in) or 4Kw (24in) models
- Lightweight and compact
- Ideal for smaller sail and power boats
- Minimal power consumption



OPEN ARRAY KEY FEATURES

- Choice of 4Kw and 10Kw, 4ft or 6ft models
- Ideal for larger power boats and superyachts
- Narrow horizontal beam widths for enhanced target separation
- Longer range scales
- Increased power output for improved long range performance
- Quiet operation

Tech info

Raymarine Radar Scanners

When ordering your Pathfinder radar you will need to specify which antenna you require -

Power (kW)	2kW	4kW	4kW	4kW	10kW	10kW
Type	RD	RD	OA	OA	OA	OA
Size (in)	18	24	48	72	48	72
Weight (kg)	6.5	7.5	30	33.4	30	33.4
Range (nm)	24	48	72	72	72	72
Part No.	ZRAYM 92650	ZRAYM 92652	ZRAYT 52001	ZRAYT 52013	ZRAYT 52012	ZRAYT 52014

RD - Radome Antenna (enclosed)

OA - Open Array

Power consumption is typical, and may increase for Open Array antennas in high winds.

Call us to discuss your requirements if you are in any doubt.

RAYMARINE E SERIES

12.1in Colour Multi-Station Combi Display



HOT PRODUCT!!

Raymarine's E120 Series multifunction, multi station navigation display combines chartplotter, fishfinder, radar, instrument data and on-board video displays into a single, rugged, easy to use unit that now offers compatibility with the very latest Navionics Platinum cartography! The amazing 12.1in, 256 colour ultrabright display is sunlight viewable and waterproof, so is equally at home mounted above or below decks. The multi station facility means you can fit one at the chart table and another at the flybridge, in the cockpit or wherever you need to keep in touch with what's going on - and the superfast 100 megabit SeaTalk_{hs} networking means data and images are transmitted virtually instantaneously.

KEY FEATURES

- Single, dual or multi-station configurations
- Plug & play - connect up to 8 SeaTalk_{hs} devices
- Display remote video sources from CCTV cameras, entertainment systems and more
- Export navigation video to remote monitors or displays
- Network with SeaTalk, SeaTalk2, SeaTalk_{hs}, NMEA0183 or NMEA2000 instruments

- Display NMEA2000 compatible engine system data
- Patented digital sonar technology for precise targeting of fish and bottom structure
- Optional 15in Remote Station Kit - see and control your E120 anywhere on board
- Bracket or flush mount

OUR VERDICT

We thought the E Series couldn't get any better, but it just did - the Platinum cartography is superb.

SUPPLIED WITH

Power & interface lead, mounting bracket.

ORDER CODE - ZRAYE02013

RAYMARINE E80

8.4in Multistation Combi Display



The 8.4in E80 has all the features of the E120 in a more compact package - ideal as a second station, or where space or budget is limited!

ORDER CODE - ZRAYE02011

RAYMARINE REMOTE STATION

15in Repeater Kit



For when a 12.1in display just isn't big enough - this kit consists of the M1500 15in waterproof monitor and the full function remote keypad, giving complete control of the E Series navigation network.

ORDER CODE - CALL FOR DETAILS

Raymarine

Cockpit Autopilots

RAYMARINE ST4000+W MKII

Cockpit Wheel Autopilot

Fully enclosed wheel mounted autopilot - no belts or untidy trailing wires. Features wheel mounted drive and a fixed control unit with large backlit display. The convenience of an inboard pilot at the cost of a cockpit pilot.

KEY FEATURES

- Low power consumption
- Innovative enclosed design
- SeaTalk and NMEA interface
- Backlit display and keypad
- Navigational information repeater
- Intelligent course holding software
- Suitable for sailboats up to 8,500kg
- Can be used on hydraulically steered boats (with optional rudder feedback)

SUPPLIED WITH

Control unit, drive/gearbox unit, fluxgate compass and cabling

ALSO CONSIDER

- Simrad WP10, WP30C

ORDER CODE - ZRAYA12053

CUSTOMER COMMENTS

"Since I retired we've sailed around the world, most of the time with our ST4000 in control and it's never let us down, even in the worst conditions."

- Mr J Plaitt, Devon



Optional Extras

Add second station control to your ST4000W by adding the new wireless SmartController.

**AVAILABLE FOR
OVERNIGHT
DESPATCH**

RAYMARINE ST4000+T/ST4000+TGP

High Performance Cockpit Tiller Autopilot

The ultimate tiller autopilots, with a fixed control head and compass unit and two very powerful drive unit options.



KEY FEATURES

- ST4000+T for sailboats up to 6,500kg
- ST4000+TGP for sailboats up to 9,000kg
- Inbuilt SeaTalk and NMEA interface
- Displays autopilot and navigational information
- Weatherproof design with two stage pushrod seal
- Low power consumption
- Intelligent course holding software

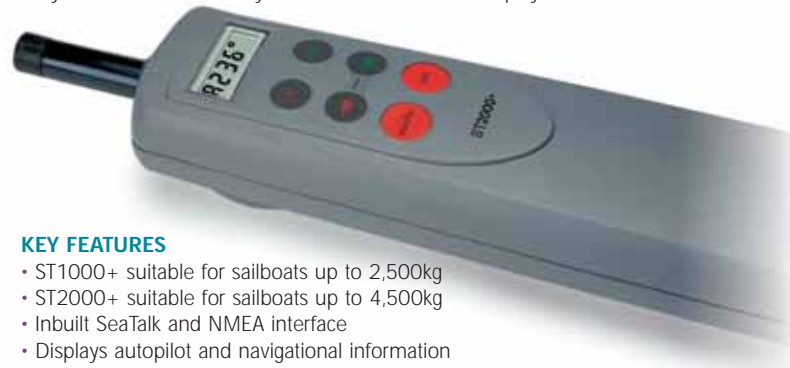
ORDER CODE ST4000+T - ZRAYA12006

ORDER CODE ST4000+TGP - ZRAYA12007

RAYMARINE ST1000+/ST2000+

Cockpit Tiller Autopilot

Raymarine's range of tiller autopilots are suitable for most tiller-steered sailboats. Easy to use and install they feature a useful backlit display.



KEY FEATURES

- ST1000+ suitable for sailboats up to 2,500kg
- ST2000+ suitable for sailboats up to 4,500kg
- Inbuilt SeaTalk and NMEA interface
- Displays autopilot and navigational information
- Weatherproof design with two stage pushrod seal
- Low power consumption
- Intelligent course holding software

ALSO CONSIDER

- Simrad TP10, TP20, TP30

ORDER CODE ST1000+ - ZRAYA12004

ORDER CODE ST2000+ - ZRAYA12005

Optional Extras

Add second station control to your ST1000, ST2000 and ST4000T by adding the new wireless S100 controller.



**SEEN IT
FOR LESS?
WE WILL NOT BE
BEATEN ON PRICE!**

We accept most major credit and debit cards



Raymarine

Wireless Autopilot

RAYMARINE S1000

Autopilot with Wireless Remote

The S1000 is an all-in-one-box autopilot system for powerboats with a SeaStar balanced hydraulic system. Complete with everything needed for easy installation, the S1000 is quick to fit and simple to use. No added complications from electronic compasses or rudder reference transducers - the S1000 doesn't need them. Control the S1000 with the S100 wireless remote - simply steer on to your desired heading, press AUTO to engage the pilot and off you go!



KEY FEATURES

- A simple "point and shoot" autopilot
- Designed for SeaStar hydraulic systems
- No electronic compass or rudder feedback unit needed
- GPS input required via NMEA
- Built-in fishing patterns including cloverleaf and zig-zag
- Steer straight at speeds up to 65mph
- Troll speeds as low as 1.3mph
- Can be linked to kicker motor



SUPPLIED WITH

Installation video, S100 wireless control unit, lanyard, belt clip, 2 x cradles, S1000 course computer, hydraulic pump, bleed kit

ORDER CODE - ZRAYE12169



RAYMARINE SMARTCONTROLLER

Wireless Remote Control

Take full on-board control of your Raymarine SeaTalk autopilot with the wireless SmartController. Wireless operation means freedom to monitor vital information when you're on deck or out of sight of your instruments.

Lightweight and compact for easy handling, the SmartController is easy to use thanks to its intuitive interface. Uses two rechargeable NiMH batteries - average 2 weeks use from a single charge.

KEY FEATURES

- Full function autopilot controller
- SeaTalk instrument repeater
- Plug and play - easy installation
- Uses latest and most reliable IEEE 802.15.4 wireless technology
- Range up to 10m from base station
- 8 user-defined pages
- Backlit display and buttons
- Keylock security
- Warning signalled when remote is out of range of base station and automatically drops autopilot to standby
- Add additional base stations for extended range
- Add handsets for additional users

SUPPLIED WITH

Base station, SeaTalk lead, 2 x mounting cradles, lanyard, belt clip and NiMH rechargeable batteries

ORDER CODE - ZRAYE15023



Turn to the back page for pricing and ordering info NOW!

RAYMARINE ST6002 SMARTPILOT

Inboard Autopilot System

Raymarine's Smartpilot range of autopilots offer more power and greater steering accuracy with their advanced AST and Autolearn software features. The ST6002 is an ideal choice when console space is limited, with its compact control head that can show up to 7 SeaTalk data pages.

SMARTPILOT KEY FEATURES

- Complete all in one autopilot options
- Linear, hydraulic and sterndrive options
- Suitable for sail and power applications
- SeaTalk & NMEA networking
- Choice of ST6002, ST7002 and ST8002 controls
- Redesigned heads to compliment C Series, E Series and ST60+
- SeaTalk & NMEA interface
- Multi station control options
- Display acts as SeaTalk instrument repeater
- Easy access to connections
- Gyro compass option
- Current limiting protection

SUPPLIED WITH

Display, course computer, fluxgate or gyro compass, feedback unit, drive. See the box on this page for package information and call us for more details

ALSO CONSIDER

- Navman G-Pilot
- Simrad AP25 and AP26



ASK US ABOUT
INSTALLATION

NEW FOR
2006

RAYMARINE ST7002 SMARTPILOT

Inboard Autopilot System

The ST7002 Smartpilot takes all the features and performance of the ST6002 and adds a fully featured multi-function control unit with large, clear LCD display.

KEY FEATURES

- All the features of the ST6002
- Large display with analogue rudder angle indicator
- Inbuilt SeaTalk & NMEA interface
- Autopilot, navigation and instrument displays
- Multi station control options
- Remote control ST60/ST60+ instruments

SUPPLIED WITH

Display, course computer, fluxgate or gyro compass, feedback unit, drive. See the box on this page for package information and call us for more details



NEW FOR
2006

RAYMARINE ST8002 SMARTPILOT

Inboard Autopilot System

All the features of the ST7002, but with a large, easy to use rotary control knob and power steer option.

KEY FEATURES

- Large display with analogue rudder angle indicator
- Inbuilt SeaTalk & NMEA interface
- Autopilot, navigation and instrument displays
- Multi station control options
- Remote control ST60 instruments

SUPPLIED WITH

Display, course computer, fluxgate or gyro compass, feedback unit, drive. See the box on this page for package information and call us for more details



NEW FOR
2006

CUSTOMER COMMENTS

"I've sailed in some pretty horrible conditions, and my Raymarine inboard pilot has never let me down."
- D. Pitt, Hants



Tech info

Selecting your Smartpilot

The Raymarine Smartpilots are designed to suit virtually any kind of boat that is afloat up to 35,000kg displacement. The flexible modular system allows you to build up an autopilot package of drive, electronics core pack and control unit to suit your unique requirements -

1. Drive Selection

Raymarine offer a selection of drives to suit the size and steering type of your boat -

Linear Drives 12 & 24v (specify)

Type	Drive	Stroke	Displacement
1	Mechanical	12in	10,000kg
2S	Mechanical	12in	15,000kg
2L	Mechanical	16in	20,000kg
2	Hydraulic	10in	22,000kg
3	Hydraulic	12in	35,000kg

Reversing Pumps 12 & 24v (specify)

Type	Ram Capacity (Min-Max)
1	80-230cc
2	230-350cc
3	350-500cc

Rotary Drive 12 & 24v (specify)

Type	Displacement
1*	10,000kg
2	20,000kg

* 12v only

2. Core Pack Selection

The core pack is the electronics package for the autopilot. It includes the course computer, rudder feedback unit and fluxgate compass.

There are two core packs available, and these are specified depending on the drive unit type selected in stage 1 -

Core Packs

Type	Voltage	Drives	Gyro	SeaTalk Ports
S1	12v	Type1	No	1
S1G	12v	Type1	Yes	1
S2	12v	Type1	No	2
S2G	12v	Type1	Yes	2
S3	12/24v	Type1/2/3	No	2
S3G	12/24v	Type1/2/3	Yes	2

3. Control Unit Selection

Choose the control unit for the autopilot system -

ST6002	Compact control unit
ST7002	Full function control unit
ST8002	Full function unit with Power Steer

Also consider...

Autopilots by -

- Navman page 19
- Simrad page 27



RAYMARINE ST60+

Instrument System

The world's best selling instrument system gets a facelift to complement the C Series, E Series and SmartPilot control heads. A full range of digital and analogue displays with large clear displays and backlit LCD and buttons. Integrates with Raymarine Autopilots, GPS, Radars and Chartplotters via SeaTalk. New "soft" power down feature.

KEY FEATURES

- Large 36.4mm (1.43in) digits on Speed & Depth
- Can be front, rear or flush mounted (kit reqd)
- Two line display on Tridata
- Full range of transducers available
- Remote control option
- Waterproof design

ALSO CONSIDER

- Navman 3100
- Simrad IS12
- Furuno FI30

NEW FOR 2006



RAYMARINE ST60+ SPEED

Speed/Log System

KEY FEATURES

- Boat speed 0-60kts
- Log & Resettable Trip
- Sea temperature
- Pilot Status display*
- Max & avg speed, VMG*
- Speed over ground*
- Stopwatch/lap timer
- Race start timer



ORDER CODE - ZRAYE22009-P

RAYMARINE ST60+ DEPTH

Depth System

KEY FEATURES

- Water depth 0.8-180m
- Depth trend indicator
- Transducer, waterline or keel offset
- Pilot status display*
- Shallow, deep & anchor alarms
- Automatic switching of depth sensors when depth sounder module is detected, to avoid interference



ORDER CODE - ZRAYE22010-P

RAYMARINE ST60+ WIND

Wind System

KEY FEATURES

- Apparent wind speed
- True wind speed*
- True wind direction*
- Max wind speed alarm
- Beaufort, knots, m/sec
- Master or repeater operation



ORDER CODE - ZRAYE22012-P

RAYMARINE ST60+ TRIDATA

Combi System

KEY FEATURES

- Combined Speed and Depth multi-line display
- Boat speed 0-60kts
- Water depth 0.8-180m
- Speed over ground
- Automatic switching of depth sensors when depth sounder module is detected, to avoid interference



ORDER CODE - ZRAYE22013-P

RAYMARINE ST60+ GRAPHIC

Multifunction Dot-Matrix Display

Versatile multifunction dot matrix display that can show any data on the SeaTalk network bus.



KEY FEATURES

- Intuitive Chapter and Page control keys
- Up to seven user configurable favourites pages
- View and control multiple data sources
- Large digit, graphical or multi-line format displays
- Single, split or quad screen displays

ORDER CODE - ZRAYE22075-P

RAYMARINE ST60+ COMPASS

Compass System

KEY FEATURES

- Heading
- Average course
- Course Over Ground*
- Man overboard display
- Keypad heading alignment



ORDER CODE - ZRAYE22014-P

RAYMARINE ST60+ RUDDER

Rudder Display

KEY FEATURES

- Analogue rudder angle
- Requires input from SeaTalk pilot or rudder transducer



ORDER CODE - ZRAYE22003-P

*Requires relevant data to be present on SeaTalk

RAYMARINE ST40

Entry Level Instrument System

Elegant and simple to operate, with large digits and razor sharp LCD displays. Optional snap-on bezels, three levels of back lighting including push buttons and waterproof to USCG-CFR 46. SeaTalk compatible, all necessary transducers are supplied with the units.



SPEED ORDER CODE - ZRAYE22043

DEPTH ORDER CODE - ZRAYE22044

WIND ORDER CODE - ZRAYE22047

COMPASS ORDER CODE - ZRAYE22048

BIDATA ORDER CODE - ZRAYE22045

RAYMARINE ST290

Premium Instrument System

Revolutionary system that combines big, bold, user-friendly displays with intelligent transducers and SeaTalk2 networking technology, combining autopilot, navigation, environmental and instrument data to create a comprehensive network with data rates 20 times faster than competing instrument systems.

RAYMARINE ST290 GRAPHIC

Multifunction Dot-Matrix Display



KEY FEATURES

- Large 5.5in dot matrix LCD
- Maximum visibility from every angle
- Easy-to-read characters
- Intuitive icons and graphics
- Intelligent rotating favourites display
- Simple chapter and page control keys

ORDER CODE - ZRAYE22057

RAYMARINE ST290 DATA

Multifunction Two Line Display



KEY FEATURES

- High contrast 5.5in two line display
- Ideal repeater solution
- Intelligent rotating favourites display
- Simple 'chapter and page' control keys

ORDER CODE - ZRAYE22056

RAYMARINE RAY240E

DSC VHF Radio

Modular VHF radio system with DSC, ATIS support, and optional hailer/foghorn support. The cellphone style handset has a familiar button arrangement with a slide down covers that protects an alphanumeric keypad. The radio's Class D DSC capability enables you to transmit vital information including your boat's identification, position and time of distress using NMEA0183 or SeaTalk data from your GPS. Placing a DSC distress call is as easy as pushing the accessible distress button on the back of the waterproof handset. The Ray240E is also ATIS (Automatic Transmission Identification System) capable for use on European inland waterways.

The modular design of the Ray240E allows the transceiver to be mounted in an out of the way location, leaving just the waterproof handset and loud-speaker on show. Dual station and remote speaker support is also featured. Each handset provides full VHF and DSC functionality plus intercom facility for communication between stations. An optional hailer horn transforms the radio into a hailer foghorn combination with programmable auto fog alert.

KEY FEATURES

- Easy-to-read backlit display
- Pull down cover reveals full function alphanumeric keypad
- Programmable scan and tri-watch function
- Loud speaker with on/off switch and volume control
- Submersible IPX-7 handset
- European National Channel Support
- Optional second station control with intercom capability
- Optional fog horn/loudhailer



ALSO CONSIDER

- Simrad RS87

ORDER CODE - ZRAYE42002

RAYMARINE 45 STV

Satellite TV Antenna System (Europe)

Satellite antenna system for DVB compatible digital satellite television receivers, the Raymarine 45 STV features a stylish and compact dome with a fully automatic, marine stabilised antenna providing uninterrupted satellite television reception in almost any condition. It quickly identifies compatible DVB (Digital Video Broadcast) satellites, using a unique Wide Range Search (WRS) algorithm. Highly accurate satellite tracking at sea is achieved via the 45 STV's Dynamic Beam Tilting technology, ensuring a clear picture in the most challenging conditions.

KEY FEATURES

- Watch satellite TV on a television, monitor, M1500 marine monitor or E Series display
- Engineered for the harshest marine environments
- Simplified cabling for easy installation
- Display E-Series feature video input for interfacing with satellite television receivers
- Dual LNB Design - watch the weather at the helm while others watch TV down below
- Supports multiple receivers
- Wide Range Search algorithm allows for fast identification and acquisition of satellites
- Dynamic Beam Tilting (DBT) Technology enables the 45 STV to track signals in the most extreme weather and sea conditions
- Compact & lightweight - footprint of only 19.2in, 14kg
- Suitable for vessels of all sizes

SUPPLIED WITH

45 STV Antenna, Antenna Control Unit. To complete the installation, you will need to purchase and activate a DVB compatible satellite TV receiver with the provider of your choice and provide a television monitor or other suitable video display



ORDER CODE - ZRAYE93009



Find out more...

DVB Satellite TV Coverage

The Raymarine 45 STV Satellite Television Antenna System can track a variety of DVB compatible and DSS (DirecTV) satellites. Your system contains a pre-programmed library of European satellites. There are also two open slots which can be programmed with user defined satellites.

To receive a satellite television service you will need to subscribe to the service from the relevant service provider. Please see each provider's web site for detailed information on coverage, satellite footprints, and subscription pricing.



Hotbird
www.eutelsat.com



Hotbird
www.eutelsat.com



Astra
www.ses-astra.com



Astra
www.ses-astra.com



Hispasat
www.hispasat.com



Sirius
www.nsab.se



Thor
www.telenor.com



DirecTV
www.directv.com



EchoStar
www.dishnetwork.com



Bell Express Vu
www.expressvu.com

Note - Reception in the US and Canada will require the North American version of the 45 STV.

RAYMARINE RAYTECH RNS 6.0

PC Navigation Software Suite

Raytech RNS V6 is a powerful PC based electronic charting system supporting raster, vector and aerial photo cartography. Plan waypoints and routes, transferring them between your PC and Raymarine chartplotters and combi displays. With a customisable user interface, SeaTalk_{hs} network support, an inbuilt worldwide tides and currents database and the option to download weather forecasts from raymarine.com just some of the features of this system you can unlock the real potential of your onboard PC.

NEW IN V6 FEATURES

- Integration with E Series displays using SeaTalk_{hs}
- Simple single Ethernet connection between the PC and the SeaTalk_{hs} network switch
- Now supports Navionics Gold and new Navionics Platinum charts on Compact Flash cards
- Improved waypoint and route sharing tools
- New HD Digital fishfinder playback feature allows you to record and play back the fishfinder display

KEY FEATURES

- Customisable user interface - organise navigation data into easy to use pages
- Download and animate weather forecasts from the Raymarine website
- Navigation and tactical tools - monitor wind, lay lines, other vessels and weather to enable you to make better decisions on the race course
- DataTrak time-based graphs - monitor wind trends and compare instrument data and the boat's performance
- Polar data collection and analysis - calculate your optimum speed and heading under varying conditions
- Route optimisation - identify the ideal route based on ocean current, wind speed and direction and your boat's polar characteristics

RECOMMENDED OPTIONS

- USB Navigation Keyboard
- M1500 15in Marine Monitor
- USB Compact Flash card reader for Navionics Gold and Platinum charts. This also enables you to transfer routes and waypoints between Raytech and your Raymarine chartplotter/combi display using blank Compact Flash cards

MINIMUM SYSTEM REQUIREMENTS

- Pentium III 1.0GHz processor
- 128Mb RAM
- Windows 2000/XP
- CD-ROM drive
- Serial port
- Ethernet Port (for SeaTalk_{hs} networking) or PCMCIA or USB2 port (for hsb2 integration)
- Monitor capable of displaying 1024x768 resolution, 16 bit colour
- Compatible USB Compact Flash card reader (for Navionics Gold and Platinum charts)

RECOMMENDED SYSTEM REQUIREMENTS

- Pentium IV processor or faster
- 512Mb RAM or higher
- NVIDIA GeForce 4 graphics processor
- Windows XP

COMPATIBLE CHARTS

- Navionics Gold, Platinum and Hot Maps
- C-Map NT+ C-Cards (requires USB C-Card reader)
- C-Map NT+ PC charts
- MapTech raster charts
- Softchart raster charts
- NDI Canadian charts

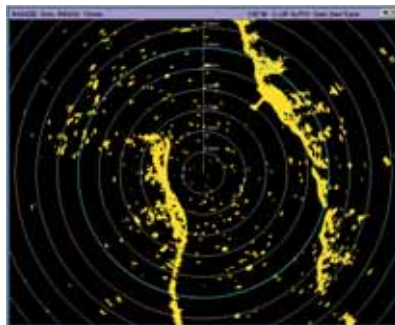
SUPPLIED WITH

Raytech RNS V6 CD-ROM, 2m serial data cable, MapTech planning charts, SoftChart planning charts, C-MAP NT+ planning charts

ORDER CODE - ZRAYE83040



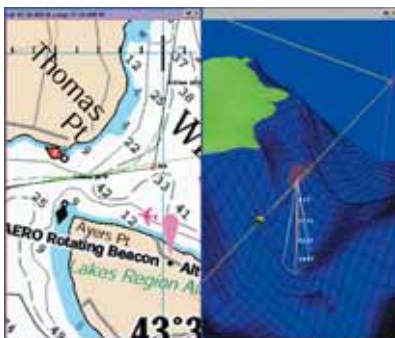
NEW FOR 2006



Radar Display



Radar/Chart Overlay



Raster Chart Display/3D Chart Display

RAYMARINE M1500

15in Marine Monitor



Waterproof daylight view marine monitor for onboard PC applications. Whether mounted inside or on deck, the multimedia ready M1500 offers bright colour, wide viewing angles and excellent contrast and is the perfect solution for Raytech RNS software applications, as an E Series remote station or as a display for the 45 STV satellite antenna system.

KEY FEATURES

- High-resolution native XGA (1024 x 768) display
- 12v/24v DC (10.7-32v)
- Rugged waterproof and impact resistant enclosure
- The only multimedia marine PC monitor available with inbuilt stereo speakers
- Digital, analogue and multimedia inputs
- Optional composite video input for video cameras, game consoles or video entertainment systems
- Designed for both console and bracket mounting
- Low profile outer bezel for flush mounting
- Backed by Raymarine's 2 year limited warranty and worldwide service and support network

ORDER CODE - ZRAYE02009

RAYMARINE USB KEYBOARD

USB Navigation Keyboard



Waterproof USB Navigation Keyboard that takes advantage of the powerful Raytech RNS interface through dedicated navigation buttons and intuitive softkeys. An inbuilt cursor and rotary knob are standard, along with a convenient alphanumeric keypad. Designed to be both "built-in" and handheld, the USB Navigation Keyboard's mounting cradle mounts flush in the dash and allows the keyboard to be removed for convenient hand held operation.. Combine the Navigation Keypad with the M1500 Marine Monitor and Raytech RNS V6 for a powerful navigation system that can be used above and below decks.

KEY FEATURES

- Simple USB connection to central PC
- Dedicated control keys, alphanumeric keypad, rotary control, cursor pad and softkeys
- Flush mount cradle enables keypad to be used as a fixed unit and it can be easily removed for hand held operation

ORDER CODE - ZRAYE05001

GARMIN GEKO 101

Handheld GPS

The smallest, lightest waterproof GPS unit on the market - perfect for beginners, occasional users or as a backup unit.

KEY FEATURES

- Compact and easy to operate
- Weighs less than 90g with batteries
- High-contrast 64x100 pixel display
- 12 hours use on 2 AAA batteries
- 250 Waypoints
- 3,000 trackpoints
- PanTrack and TracBack™

ALSO AVAILABLE

- **Geko201** - WAAS enabled with trip computer, 10,000 trackpoint memory, "upcoming turn" feature and four games
- **Geko301** - all the features of the 201, plus an electronic compass and barometric altimeter

ORDER CODE - CALL FOR DETAILS



GARMIN eTREX

Handheld GPS

The eTrex takes the best features of a 12 parallel channel GPS and puts them into a 100x50mm (4 x 2in) package that weighs only 170g.

KEY FEATURES

- Waterproof
- 18 hrs use on 2 x AA batteries
- Up to 500 waypoints with graphic icons
- TracBack™
- Animated graphics
- Wide range of models to suit all applications

ALSO AVAILABLE

- **eTrex Summit** - includes an altimeter and electronic compass
- **eTrex Legend** - WAAS enabled, world city database, 1Mb internal memory, MapSource compatible

ORDER CODE - CALL FOR DETAILS



GARMIN GPS72

Handheld GPS

One of the best entry-level handheld GPS on the market, this rugged waterproof unit is WAAS-enabled, has a large, 4-level grayscale screen and it floats!

KEY FEATURES

- 500 waypoints, 50 routes
- Large digit option
- Alarms for anchor drag, arrival, off-course, proximity waypoint and clock
- Trip computer with odometer, stopped time, moving average, overall average, total time, max speed and more
- Automatic track log - 10 saved tracks let you retrace your path in both directions
- Course and speed filtering
- Built-in celestial tables

SUPPLIED WITH

PC Cable, Wrist strap



ORDER CODE - ZGAR010-00309-00

GARMIN GPS76

Handheld GPS

With a higher resolution display than the GPS72, the GPS76 is supplied preloaded with worldwide city information and nautical navigation aids.

KEY FEATURES

- TracBack™
- Trip computer
- 16 hrs use on 2 x AA batteries
- Approach, arrival, off-course, waypoint proximity, anchor drag, shallow and deep water alarms

SUPPLIED WITH

PC Cable, Wrist strap

ORDER CODE - ZGAR010-00244-01



GARMIN GPSMap76

Handheld GPS

All the features of GPS76 with the addition of mapping functions - download charts from a Garmin MapSource CD-ROM.

KEY FEATURES

- 8Mb memory
- Includes detailed basemap
- Cities, major roads, rivers, lakes, plus worldwide city, navaid and European tide data

SUPPLIED WITH

PC Cable, Wrist strap

ORDER CODE - ZGAR010-00249-01



GARMIN GPSMap76S

Handheld GPS

All the features of the GPSMap76 plus a barometric altimeter and an electronic compass.

SUPPLIED WITH

PC Cable, Wrist strap

ORDER CODE - ZGAR010-00271-01



GARMIN GPSMap76Cx

Colour Handheld GPS

All the features of the 70 series with a 256 colour display, 115Mb of memory, an Atlantic Autoroute basemap and a Marine Point database. Fast USB connectivity makes loading charts and maps quick and easy.

KEY FEATURES

- Up to 30 hours battery life using 2 x AA batteries
- 1000 user waypoints, 50 routes
- 10,000 point automatic track log, 20 saved tracks
- Compatible with most MapSource products including BlueChart, City Select etc

SUPPLIED WITH

PC Cable, Wrist strap

ORDER CODE - ZGAR010-00352-01

ALSO AVAILABLE

- **GPSMap76CSx** - Adds a barometric altimeter and electronic compass.

ZGAR010-00353-01



GARMIN GPSMap60Cx

Handheld GPS Chartplotter

Rugged handheld GPS chartplotter with colour TFT sunlight-viewable display and inbuilt International basemap with auto-routing capabilities. Compatible with BlueChart and City Select MapSource* products.

* Not recommended for use with Metroguide

KEY FEATURES

- 500 waypoints, 20 reversible routes
- 10,000 point tracklog, 20 saved tracks
- Large numbers option
- WAAS enabled
- Serial and USB interfaces
- Multiple position formats
- Anchor, arrival, off-course, waypoint and clock alarms
- Dual position display mode
- 56Mb internal memory
- Battery life: 30 hrs (typical use)
- Trip computer and stop watch
- Built-in celestial tables

SUPPLIED WITH

PC/USB cable, Lanyard, belt clip

ORDER CODE - ZGAR010-00322-21

ALSO AVAILABLE

- **GPSMap60CSx** includes an electronic compass and a barometric altitude sensor

ORDER CODE - ZGAR010-00322-31

SEEN IT FOR LESS?
WE WILL NOT BE BEATEN ON PRICE!



GARMIN GPS276C

3.8in Colour Automotive/Marine Chartplotter

Versatile colour automotive navigator and marine chartplotter - moves easily from car to boat. Includes inbuilt Autoroute basemap and accepts Bluechart marine charts datacards.

KEY FEATURES

- Download information from MapSource CD-ROMs
- 3000 waypoints with name and graphic symbol
- 50 routes (300 waypoints/route)
- 10,000-point automatic track log
- Optional remote antenna
- Serial and USB interfaces
- 2 NMEA ports
- Built-in tide and celestial tables
- Alarms: anchor drag, arrival, off-course, proximity waypoint and clock

SUPPLIED WITH

PC cable, Power/Data cable, mounting bracket



ORDER CODE - ZGAR010-00331-01

GARMIN QUEST2

Automotive GPS Navigator

Comes pre-loaded with City Navigator Europe NT, giving full coverage of major metropolitan areas throughout West Europe including nearly six million points of interest such as petrol stations, hotels, restaurants and attractions.



KEY FEATURES

- Displays streets, addresses and businesses
- 512Mb memory for downloading map detail from other MapSource products such as BlueChart
- Sunlight-readable 2.6in 256 colour, high-res display
- Backlit display and keypad
- Customised points of interest
- 11 voice languages

SUPPLIED WITH

Autoroute basemap, PC/USB cable, suction cup mount with speaker, dashboard disk mount

ORDER CODE - CALL FOR DETAILS



GARMIN STREETPILOT 2610

Automotive GPS Navigator

Colour touch screen GPS navigator guides you to your destination including turn-by-turn directions and voice prompts. Includes inbuilt maps and everything needed to download additional map detail.



KEY FEATURES

- Look up points of interest and addresses in seconds
- CompactFlash slot for additional map storage
- Alphanumeric remote control

SUPPLIED WITH

Remote control, external speaker, PC/USB cable, A/C power adapter, dash mount, bean bag mount (friction mount), Autoroute Basemap (*Europe, Americas, Australia or South Africa - please specify when ordering*). Optional external antenna.

ORDER CODE - ZGAR010-00273-04

GARMIN c310

Automotive GPS Navigator

In-car navigation has never been easier or more affordable. The c310 provides automatic route calculation, turn-by-turn voice directions and a 3D navigation view. All the features of a premium in-car system at a fraction of the cost.



KEY FEATURES

- Bright 3.5in TFT touchscreen display
- Preloaded with one specific region (eg UK/Ireland)
- Customised points of interest
- Internal lithium-ion battery

SUPPLIED WITH

Suction cup mount with 12-volt adapter, PC/USB cable, 256MB SD memory card

ORDER CODE - ZGAR010-00401-31

GARMIN STREETPILOT 2720

Automotive GPS Navigator

With the features of the StreetPilot 2610, the 2720 adds text-to-speech, which audibly announces the name of upcoming streets and points of interest. The optional GTM10 module receives digital traffic, road-works and weather info enabling the StreetPilot to calculate alternative routes where necessary.



KEY FEATURES

- Colour sunlight-viewable touchscreen automatically adjusts backlight for optimum viewing in any light
- 3D perspective, top down or north-up map view
- Import custom points of interest

SUPPLIED WITH

Remote control, power cable with external speaker, PC/USB cable, A/C power adapter, dash mount, beanbag mount, City Navigator Europe NT (pre-loaded), City Navigator Europe NT DVD

ORDER CODE - ZGAR010-00408-03

GARMIN NUVI 300

Automotive GPS Travel Assistant

The ultimate travel companion. Approximately the size of a deck of playing cards, the Nüvi 300 is an all in one GPS navigator, traveller's reference and digital entertainment system providing automatic routing, turn-by-turn voice directions and touchscreen control. Supplied with one region (eg UK/Ireland) and 200Mb of internal memory for storage of supplemental maps, MP3s and audio books.

KEY FEATURES

- MP3 and audio book player
- JPEG picture viewer
- World travel clock with time zones
- Calculator, currency and measurement converter
- Optional Travel Guide
- Optional Language Guide with spoken pronunciation
- Optional GTM10 traffic receiver - avoid traffic jams by simply pushing a button to calculate a new route

SUPPLIED WITH

Suction cup mount, carrying case, 12-24v adapter cable, dashboard disk mount, USB cable, sample Language Guide content, sample MP3s

ORDER CODE - CALL FOR DETAILS

ALSO AVAILABLE

- Nüvi 350 - contains full European mapping and 700Mb internal memory



GARMIN GPSMap292C

5in Colour Chartplotter

Compatible with the new-generation BlueChart g2 marine cartography and featuring an enhanced worldwide basemap, the new GPSMap292 has a clear sunlight-viewable 5in colour display with exceptional resolution and a fast redraw rate.



HOT PRODUCT!!

NEW FOR 2006

KEY FEATURES

- 3000 waypoints
- Multiple routes
- Retraceable tracks
- Internal or external GPS antenna
- Enhanced chart display including 3D map view with new BlueChart g2 cartography
- Compatible with DSC VHF radios
- Upgrade to a combination chartplotter/sounder by adding the Garmin GSD20 black box sonar

SUPPLIED WITH

Remote or integrated GPS sensor, power/data cable, tilt/swivel mount bracket

ORDER CODE INTERNAL GPS - ZGAR010-00506-00

ORDER CODE EXTERNAL GPS - ZGAR010-00506-01

GARMIN GPSMap172C

4.5in Colour Chartplotter

A new sunlight-viewable colour LCD chartplotter with robust features and a user-friendly interface in a compact unit. It comes standard with a built-in worldwide marine basemap and accepts MapSource BlueChart offshore marine cartography - featuring detailed depth contours, inter-tidal zones, wrecks, nav aids, and many other points of interest.



KEY FEATURES

- User waypoints are automatically tagged with the date and time of creation
- 10,000 active track points and 1000 saved track points
- Database information can be stored on removable data cards and transferred to a PC or another unit
- Sends, receives, and displays positioning data with DSC-equipped VHF radios
- TracBack™ mode helps guide you back to points along a route
- Tracklines can be colour-coded for trolling or cruising applications
- Upgrade to a combination chartplotter/sounder by adding the Garmin GSD20 black box sonar

SUPPLIED WITH

Remote antenna with 30ft cable or integrated GPS sensor, power/data cable, surface-mount bracket

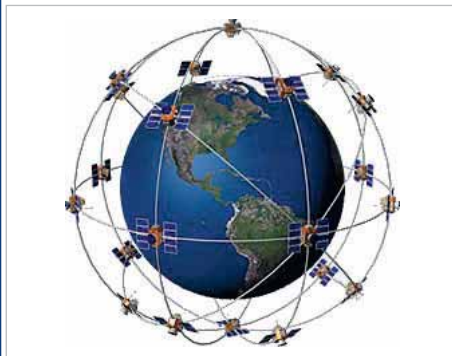
ORDER CODE - ZGAR010-00327-00



Find out more...

What is GPS?

The Global Positioning System is a navigation system consisting of a network of 24 orbiting satellites that are 11,000nm in space and in 6 different orbital paths. The satellites orbit around the Earth roughly every 12 hours. The first GPS satellite was launched back in February, 1978. Despite their distance above the earth, the transmission power is only 50 watts or less!



Each satellite is expected to last about 10 years. Replacements are constantly being built and launched into orbit - the GPS program is currently funded with replacements through 2006.

The orbits of the satellites take them between roughly 60°N and 60°S latitudes. This means that satellite signals can be received anywhere in the world, at any time, in all weather conditions.

What info do the satellites transmit?

The GPS signal contains a PRN code, ephemeris and almanac data. The PRN code (a number from 1 to 32) identifies which satellite is transmitting. Ephemeris data contains information such as status of the satellite, current date, and time. Almanac data tells the GPS receiver where each satellite should be at any time of the day.

Each satellite transmits a message, essentially saying, "I'm satellite #X, my position is currently Y, and this message was sent at time Z." To determine your position the GPS receiver compares the time a signal was transmitted by a satellite with the time it was received by the GPS receiver. The time difference tells the GPS receiver how far away that particular satellite is. By measuring the distance from other satellites, the GPS can triangulate the position.

With a minimum of three satellites, the GPS can determine a 2D position fix - latitude and longitude. With four or more satellites a 3D position - latitude, longitude and altitude can be calculated. By continuously updating your position, a GPS receiver can also accurately provide speed and direction of travel - referred to as Speed and Course Over Ground.



Also consider...

Chartplotters by -

- Lowrance page 29
- Navman page 21
- Raymarine page 3-5

GARMIN GPSMap2106C

6.4in Colour Chartplotter

Fantastic new standalone BlueChart g2 compatible 6.4in, 256-colour TFT chartplotter. Sunlight viewable display for outstanding contrast and resolution, even in direct sunlight. Advanced BlueChart g2 cartography offers enhanced features such as 3D chart view.



KEY FEATURES

- 3000 Waypoints with comment, 50 routes
- MOB and TracBack™ modes
- 5,000 point automatic track log
- Anchor drag, arrival, off course, deep & shallow water, waypoint arrival, clock and battery alarms
- Built-in celestial tables
- Enhanced chart display including 3D map view with new BlueChart g2 cartography
- Download information from MapSource CD-ROMs
- WAAS enabled

NEW FOR 2006

SUPPLIED WITH

External 12 channel GPS antenna, power/data cable, mounting bracket

ORDER CODE - ZGAR010-00535-00

GARMIN GPSMap178C

4.5in Colour Chartplotter/Fishfinder

Fully integrated chartplotter and dual (50/200kHz) or single-frequency (200kHz) sonar. Supplied with a built-in worldwide marine basemap and accepts BlueChart offshore marine cartography.



KEY FEATURES

- TracBack™
- 10,000 track points, 700 saved track points
- Sends, receives, and displays positioning data with DSC equipped VHF radios
- 500W output (dual-frequency), 400W (single frequency)
- See-Thru function separates fish from thermoclines
- Depth Control Gain (DCG) for detailed images of structure and bottom densities
- Semi-transparent digital readout allows users to see sonar images "behind" data
- Shallow, deep, fish size, timer, battery-voltage, anchor-drag, arrival, off-course, proximity waypoint and clock alarms

SUPPLIED WITH

Remote antenna with 30ft cable or integrated GPS sensor, power/data cable, surface-mount bracket. Transducer must be specified when ordering.

ORDER CODE - ZGAR010-00340-00

GARMIN GPSMap2110C

10in Colour Chartplotter

Fantastic new standalone BlueChart g2 compatible 10in, 256-colour TFT chartplotter. Sunlight viewable display for outstanding contrast and resolution, even in direct sunlight. Advanced BlueChart g2 cartography offers enhanced features such as 3D chart view.



KEY FEATURES

- 3000 Waypoints with comment, 50 routes
- MOB and TracBack™ modes
- 5,000 point automatic track log
- Anchor drag, arrival, off course, deep & shallow water, waypoint arrival, clock and battery alarms
- Built-in celestial tables
- Enhanced chart display including 3D map view with new BlueChart g2 cartography
- Download information from MapSource CD-ROMs
- WAAS enabled

NEW FOR 2006

SUPPLIED WITH

External 12 channel GPS antenna, power/data cable, mounting bracket

ORDER CODE - ZGAR010-00536-00

GARMIN GPSMap298C

5in Colour Chartplotter/Fishfinder

Combining colour chartplotting with a powerful dual frequency sounder in one compact unit, the GPSMap298 is compatible with the new-generation BlueChart g2 marine cartography and featuring an enhanced worldwide basemap, the new GPSMap298C has a clear sunlight-viewable 5in colour display with exceptional resolution and a fast redraw rate.



NEW FOR 2006



KEY FEATURES

- 3000 waypoints
- Multiple routes
- Retractable tracks
- Internal or external GPS antenna
- Compatible with DSC VHF radios
- Enhanced chart display including 3D map view with new BlueChart g2 cartography
- 50/200kHz dual frequency sounder
- 500 watts (RMS)
- See-Thru function separates fish from thermoclines
- Ultrascroll

SUPPLIED WITH

Internal or external GPS, 50/200kHz transducer, power/data cable, tilt/swivel mount bracket

ORDER CODE INTERNAL ANTENNA - ZGAR010-00507-02

ORDER CODE EXTERNAL ANTENNA - ZGAR010-00507-03

GARMIN GPSMap3005C

5in Colour Combination Display

If you want to enjoy the benefits of the Garmin Marine Network but are limited on space or budget, the new GPSMap3005C is the perfect solution, offering all the features of the larger 3006C and 3010C units (without the VGA output and video input options).

NEW FOR 2006



KEY FEATURES

- 5in colour sunlight viewable display
- Bluechart g2 compatible
- Garmin Marine Network compatible
- Inbuilt world basemap
- Add radar with optional GMR20 2kW (24nm range) or GMR40 4kW (36nm range) radome antennae
- Radar/chart overlay and split screen modes
- MARPA target tracking
- Add sonar with optional GSD20 remote sounder

SUPPLIED WITH

GPS 17 WAAS-enabled sensor, A/V cable, power/data cable, mounting bracket, unit cover

ORDER CODE - ZGAR010-00402-00

Find out more...

Garmin Marine Network

The Garmin Marine Network is a high-speed data system that seamlessly connects multiple plug-and-play components together - displays, GPS, echosounder and radar, bringing all data to hand on your display.

The GPSMap3005C, 3006C and 3010C combi displays are Garmin Marine Network ready, giving a range of screen sizes from 5in to 10.4in. Multiple displays can be connected together using the GMS10 network port expander and the same network cabling is used throughout the system, making installation simple.



GMS10 Network Port Expander

The Garmin Marine Network also offers a unique network upgrade system. The user simply writes the current software version of all components within the network onto a Garmin data card. This data is then uploaded via a PC to the Garmin website, where the new software version is downloaded to the data card. The entire system is automatically updated once the card is re-inserted into the display.

GARMIN GPSMap3006C & 3010C

6.4in and 10.4in Colour Combination Displays

Colour 6.4in (GPSMap3006C) and 10.4in (GPSMap3010C) combination displays offering GPS, weather, sonar, radar and other data. Both units feature a sunlight viewable 256-colour display. The entire system is plug-and-play - the displays automatically detect any peripherals when connected. You can connect a GPS antenna and one remote sensor directly to the display, or with the addition of the GMS10 Network Port Expander, users can connect multiple displays and sensors to the same network.



▲ 3010C

HOT PRODUCT!!

KEY FEATURES

- WAAS-enabled, 12 parallel channel GPS sensor
- Dual Bluechart g2 card slots
- 10,000 point automatic track log, 15 saved tracks, 700 points/saved track
- 4000 user waypoints with name and graphic symbol, 50 reversible routes, 300 waypoints per route
- Two composite video inputs for on-board cameras, 1 VGA PC monitor video output, 3 NMEA0183 ports
- Anchor drag, arrival, off-course, shallow water, deep water, proximity waypoint, clock, and battery alarms
- Built-in celestial tables for sun and moon calculations
- Inbuilt world basemap showing cities, interstates, coastline detail and tides
- Add radar with optional GMR20 2kW (24nm range) or GMR40 4kW (36nm range) radome antennae
- Radar/chart overlay and split screen modes
- MARPA target tracking
- Add sonar with optional GSD20 remote sounder

SUPPLIED WITH

GPS 17 WAAS-enabled sensor, A/V cable, power/data cable, mounting bracket, unit cover

3006C ▶



ORDER CODE 3006C - ZGAR010-00348-00
ORDER CODE 3010C - ZGAR010-00350-00

CONTACT US - SEE BACK PAGE

GARMIN Fishfinder90

4in Mono Fishfinder

Compact dual beam fishfinder that combines ease of use with Garmin's exclusive fishfinder technology. The 45° beam angle gives a greater field of view.



NEW FOR 2006

KEY FEATURES

- 80/200kHz, max depth 200m (600ft)
- 100 watts RMS
- See-Thru function separates fish from thermoclines
- Alarms for fish size and shallow water
- Fish ID with optional fish depth numbers

SUPPLIED WITH

80/200kHz transom transducer, quick release mount

ORDER CODE - ZGAR010-00459-00

GARMIN Fishfinder140

4.75in Mono Fishfinder

If you like the features of the Fishfinder90 but want a larger, higher resolution screen then the Fishfinder140 is the answer. With all the features of the Fishfinder 90, the Fishfinder140 adds a 8.4 x 8.4cm (4.75in diagonal) 4-level greyscale display for greater detail. The keypad layout is simple and intuitive and the unit is easy to operate.



NEW FOR 2006

KEY FEATURES

- 80/200kHz, max depth 200m (600ft)
- 100 watts RMS
- See-Thru function separates fish from thermoclines
- Alarms for fish size and shallow water
- Fish ID with optional fish depth numbers

SUPPLIED WITH

80/200kHz transom transducer, quick release mount

ORDER CODE - ZGAR010-00460-00

GARMIN Fishfinder160C

4.75in Colour Fishfinder

The 160C is a dual beam fishfinder with a superb sunlight-viewable colour display. With all the features of the Fishfinder140, the 160C has a higher power output (150w RMS) giving a maximum depth of up to 300m (900ft).



NEW FOR 2006

KEY FEATURES

- 80/200kHz, max depth 300m (900ft)
- 150 watts RMS
- See-Thru function separates fish from thermoclines
- Alarms for fish size and shallow water
- Fish ID with optional fish depth numbers

SUPPLIED WITH

80/200kHz transom transducer, quick release mount

ORDER CODE - ZGAR010-00403-01

GARMIN Fishfinder250C

4.75in Colour Fishfinder

Single/Dual frequency colour fishfinder. Select between 200kHz single or 50/200kHz dual. With up to 500W RMS power output (dual) the 250C has a maximum depth of up to 500m (1500ft). Also available with a mono display (Fishfinder250).



KEY FEATURES

- 50/200kHz, max depth 500m (1500ft)
- 400 watts RMS (single), 500 watts RMS (dual)
- See-Thru function separates fish from thermoclines
- Adjustable range, gain, zoom, scroll speed
- Fish ID with optional fish depth numbers

SUPPLIED WITH

80/200kHz transom transducer, quick release mount

ORDER CODE SINGLE - ZGAR010-00341-02

ORDER CODE DUAL - ZGAR010-00341-01

GARMIN Fishfinder340C

5in Colour Fishfinder

Fantastic colour dual beam, dual frequency fishfinder with all the features of the smaller units, the 340C also offers enhanced software features such as drift alarm, timers and temperature log.



NEW FOR 2006

KEY FEATURES

- 80/200kHz, 45°/20° beam
- 400 watts RMS (dual beam),
- 500 watts RMS (dual frequency)
- Round flasher
- A-scope

SUPPLIED WITH

80/200kHz transom transducer, quick release mount

ORDER CODE - ZGAR010-00505-02

GARMIN GSD20

Remote Sounder Module



Turn your 172, 276, 292, 2000 or 3000 series plotter into a fully featured chartsounder with this black box module. A wide range of transducers are available - call us for details.

KEY FEATURES

- 500 watts at 50/200kHz
- Auto-ranging
- 2X and 4X auto and manual zoom
- Optional fish symbols
- See-Thru technology - separates fish from thermoclines and structure

SUPPLIED WITH

Transducers are not supplied with the GSD20 and must be specified when ordering

ORDER CODE - ZGAR010-10330-00

A closer look...

Portable Units

The Fishfinder90, 140 and 160C are also available as portable units with a battery pack and suction mount transducer.



These are ideal for small dayboats that don't have their own power supply, where you want to be able to move the it easily from boat to boat or if you want to be able to take it home with you at the end of the day.

GARMIN BLUECHARTS

Electronic Cartography

Garmin's Bluechart cartography is unique to their range of chartplotters. Available on pre-programmed data cards or on CD-ROM, the charts are available in two sizes - Regular, shown below and Small. Please call us for details of Small charts and Regular chart coverage in areas outside the British Isles and the European Atlantic Coast.

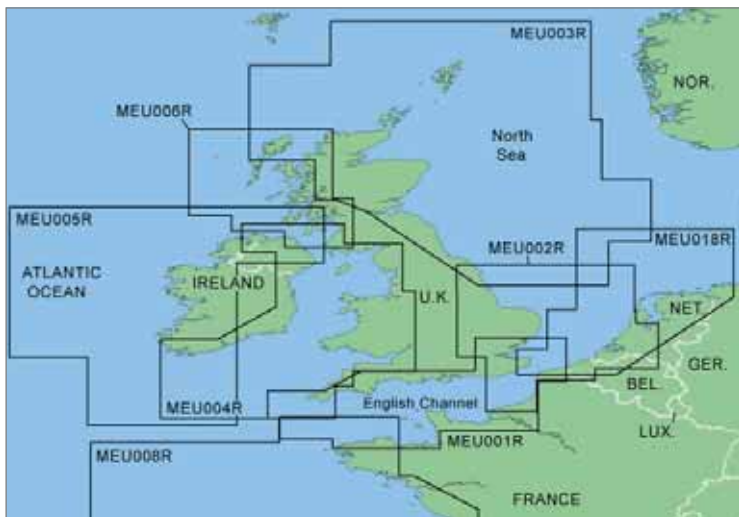
Descriptive details for features found on nautical charts can easily be viewed with a simple key press. Cursor movements over the chart provide descriptions for contour depths, chart number, navaid name, and much more. Data includes shaded depth contours, inter-tidal zones, spot soundings, wrecks, nav aids, port plans, restricted areas, cable areas, anchorages, and more.

KEY FEATURES

- Vector data with paper chart-like appearance
- Large coverage areas for ease of selection and greater overall satisfaction
- Chart-by-chart presentation provides best resolution and detail that the chart will allow
- Shaded depth contours and inter-tidal zones with spot soundings
- Aids to navigation with view range and coverage including light sectors information
- Detailed port plans
- Tide data
- Wrecks, restricted areas, cable areas, anchorages, shoals, spoilage and more
- Bridges are described indicating construction type, clearance, length, etc
- All data in WGS 84 datum
- Available on pre-programmed data cards or on MapSource CD-ROM

GARMIN BLUECHART REGULAR

UK & Ireland



Order Code Description

- | | |
|---------|--|
| MEU001R | ENGLISH CHANNEL: FELIXSTOWE TO ISLES OF SCILLY, INC DOVER, SOLENT & ISLE OF WIGHT. RIVER THAMES FROM TWICKENHAM TO THE NORTH SEA. DUNKERQUE TO LABER WRAC'H, INC ROUEN AND THE CHANNEL ISLANDS |
| MEU002R | DOVER TO AMSTERDAM & ENGLAND SE: SCARBOROUGH HBR TO NEWHAVEN, INC RIVER THAMES TO LONDON. CONTINENTAL COAST FROM AMSTERDAM TO FECAMP |
| MEU003R | GREAT BRITAIN, NORTHEAST COAST: ISLE OF LEWIS, SCOTLAND TO BRIDLINGTON HBR, ENGLAND, INC GAIRLOCH, SHETLAND ISLANDS, EDINBURGH, AND NORTH SEA OFFSHORE CHARTS, ALSO THE CALEDONIAN CANAL, LOCH LINNHE AND LOCH NESS. |
| MEU004R | IRISH SEA: PORT ELLEN ON THE ISLE OF ISLAY TO FALMOUTH, INC ISLE OF MAN AND ISLES OF SCILLY. SHEEP HAVEN TO CAHERCIVEEN, REPUBLIC OF IRELAND, INC LONDONDERRY, THE STORKS, BELFAST, AND DUBLIN. |
| MEU005R | IRELAND, WEST COAST: DETAILED COVERAGE OF WEST COAST OF IRELAND CORK HARBOUR TO BELFAST. GENERAL COVERAGE OF EAST COAST. ALSO COVERS SCOTTISH COAST FROM ISLE OF COLONSAY TO CAMPBELTOWN HBR. |
| MEU006R | SCOTLAND, WEST COAST: ISLE OF LEWIS AND LOCH BERVIE TO CAMPBELTOWN HBR AND GIRVAN, INC GLASGOW, AYR AND ISLANDS OF SKYE, ARRAN, AND MANY OTHERS. IRISH COAST: GENERAL COVERAGE FROM SHEEP HAVEN TO CARNLOUGH HBR. |
| MEU018R | THE NETHERLANDS AND EUROPE: SPIEKEROOG, GERMANY TO CALAIS, FRANCE, INC THE NETHERLANDS AND BELGIUM COAST GT BRITAIN WHITSTABLE TO FOLKESTONE, INC GT YARMOUTH. |

GARMIN BLUECHART g2

Electronic Cartography



The new BlueChart g2 cartography features smoother layering and better integration of chart graphics for easy panning, scrolling and zooming. The richer colours and shading improves visibility and makes the information easier to interpret.

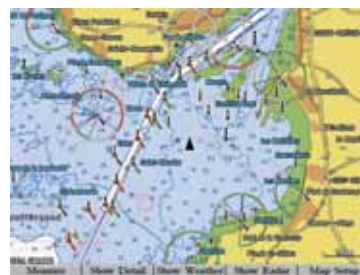
More detail has been added to land features, coastal roadways, marine services and points of interest such as restaurants, lodging, local attractions and more. Full-color aerial photos of ports, marinas, bridges, and navigational landmarks are also included on many data cards. It offers standard IALA symbology and a choice of normal 2D or 3D chart representation, making orientation easier.

As with the original BlueChart, BlueChart g2 is designed to match the appearance of paper charts. Features include shading between depth contours.

g2 is compatible with the GPSMap292, GPSMap298, GPSMap2106C, GPSMap2110C, GPSMap 3005C, GPSMap3006C & GPSMap3010C among others.

Current owners of the GPSMAP 3005C, 3006C, and 3010C can also use g2 data cards in their system. The newest generation of Garmin chartplotters will also support previous versions of BlueChart.

Call us for details of coverage and pricing.



Shaded map areas make identifying intertidal zones, depth contours etc



3D chart representation makes orientation easier



Port plan photography



Enhanced cartography lets you visualise map details in 3d perspective

NAVMAN 8120

12in Colour Combi Display

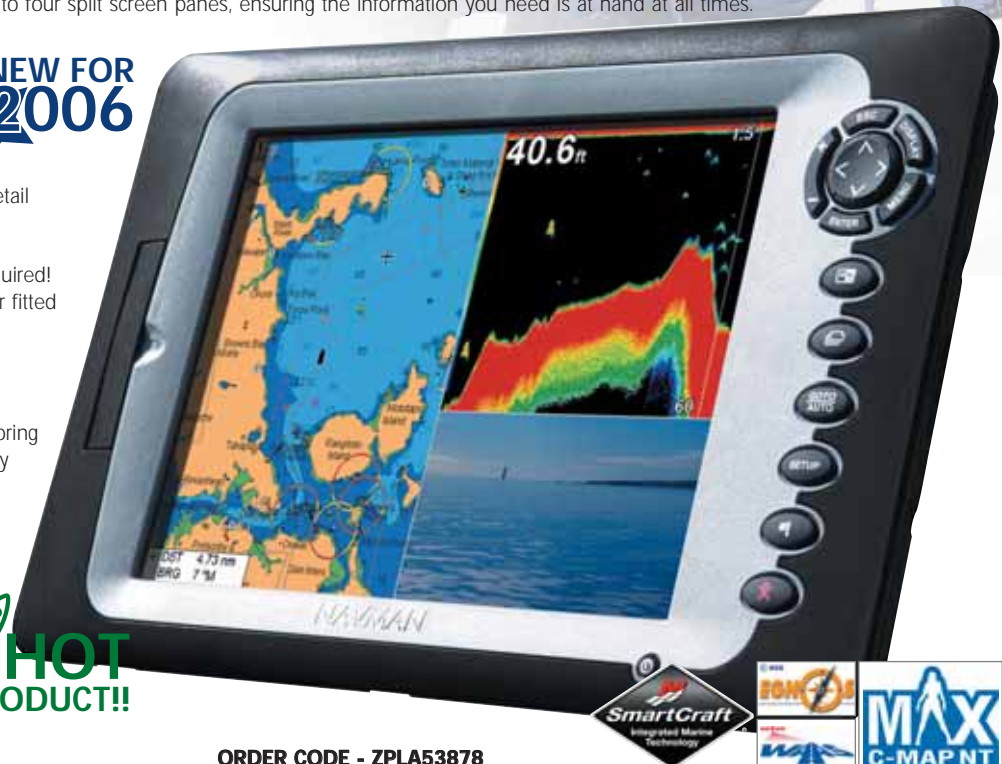
Superb new 12in colour multifunction display that integrates GPS, chartplotting, sonar, fuel management and video into one sleek, low profile unit. The daylight view SVGA colour screen can display data in full screen or up to four split screen panes, ensuring the information you need is at hand at all times.

KEY FEATURES

- 12.1in SVGA 800x600 pixel daylight view display
- 12-24v DC
- Waterproof to IPX7
- Inbuilt 32Mb background map
- Dual C-Map MAX chart card slots
- C-Map MAX enhanced chart data, port info and land detail
- 3000 waypoints, 25 routes, 50 waypoints per route
- Dual frequency 50/200kHz echosounder
- Inbuilt 1kW echosounder transceiver - no black box required!
- Automatically adjusts power output to match transducer fitted
- Max depth 1000m
- Engine performance data
- Petrol and Diesel fuel management
- SmartCraft management for Mercury engines
- RCA video input - connect deck or engine room monitoring cameras, DVDs, camcorders etc and view on the display (separate audio output required)
- VHF DSC interface - display call details on screen
- Fish forecast / Weather Station display (with VHF 7200 connected)
- "Track-Your-Buddy" on-chart display integration with VHF 7200
- Flush or bracket mount
- Full 2 year warranty

NEW FOR 2006

HOT PRODUCT!!



SUPPLIED WITH

Transducers, fuel management kits, SmartCraft gateways and other peripherals must be ordered separately

ORDER CODE - ZPLA53878

NAVMAN G-PILOT 3380

Colour Inboard Autopilot System

Navman take their acclaimed G-Pilot system to the next level with this innovative new autopilot system with a high resolution colour daylight view TFT display and rotary control dial.

KEY FEATURES

- Port and starboard LED knob surround flash to show course adjustments at a glance, even at night
- Unique on-screen animations of vessel's intended actions and progress
- One button dodge and jog keys
- Compass mode display with rudder angle indicator
- Pilot mode display with configurable data fields to display pilot information or nav data via NavBus
- Fuel management display
- SmartCraft display
- Compatible with existing G-Pilot 3100 systems - upgrade your existing system or add a 3380 control head as a second station



NEW FOR 2006



ORDER CODE - ZPLA53184

CORE PACK SUPPLIED WITH

Course computer, fluxgate compass, rate gyro compass, rudder feedback unit. Drives must be specified separately

NAVMAN G-PILOT 3100

Inboard Autopilot System

Entry level G-Pilot provides total reliability and performance whether you are coastal cruising or crossing an ocean. Supplied as standard with a rate gyro compass for superior course holding.

KEY FEATURES

- Suitable for power and sail applications
- Multiple station option
- Preset dodge & auto tack with audible countdown timer
- Easy to use interface with clear instructions displayed on screen
- Preset the turn-rate limit (degrees/sec) to avoid sharp turning
- Steer to compass (true or magnetic), GPS course, waypoint or wind angle

CORE PACK SUPPLIED WITH

Control head, course computer, fluxgate compass, rate gyro compass, rudder feedback unit. Drives must be specified separately



ORDER CODE - ZPLA49500

Also consider...

Navigation Displays -

- Garmin page 16
- Raymarine page 3-5
- Simrad page 26

CUSTOMER COMMENTS

"Steering this boat is challenging at the best of times but the Navman G-Pilot performed flawlessly for the entire trip from France to Brazil!"
- C. Sayer, Mini-Transat Racer

Tech info

G-Pilot Drive Options
The G-Pilot's range of drives suit most mechanical and hydraulic steering systems -

Hydraulic Reversing Pump		
Part No.	Flow Rate	Ram Capacity
176891	1 Litre/min	80cc to 250cc
176892	1.5 Litre/min	150cc to 400cc
176893	2 Litre/min	350cc to 500cc

Constant Running Pump		
Part No.	Flow Rate	Ram Capacity
176889	2.5 Litre/min	250cc to 500cc
176890	4.5 Litre/min	500cc to 1200cc

Linear Drives		
Part No.	Max Disp	Stroke
176884	11350kg	200mm
176885	20450kg	250mm
176886	34000kg	300mm

Please contact us to discuss drive unit selection, as vessels of the same size can vary in rudder loading. We can advise on the most suitable pilot and drive selection for your vessel.

NAVMAN VHF 7110**Fixed DSC VHF**

Navman has built on the success of the popular VHF 7100 with the new VHF 7110, which features a full function second station handset. Featuring the same large backlit LCD display as the main unit and - crucially - a distress alert button, it's ideal for use in the cockpit or on the flybridge, anywhere that a second station is required. The second station gives you complete control over all the VHF functions and also enables you to make intercom calls between the handset and the main unit.

The main unit itself has all the features and functions of the VHF 7100 and both units are fully waterproof.

KEY FEATURES

- Fistic with channel, power and priority channel buttons
- Fully function second station handset
- Super large, clear FSTN display with amber backlighting on both units
- Instant access to up to 3 of your favorite channels with easy user programming
- Select from several scanning modes such as All-Scan and Favourite Channel scan modes
- Automatic GPS boat position and time when connected to a GPS receiver
- Local/Distant feature eliminates unwanted interference in high traffic areas
- Call logs with instant call back capability

SUPPLIED WITH

Fistic, second station fistic, flush and bracket mounts, dust cover

ORDER CODE - ZPLA53500

NEW FOR
2006

NAVMAN VHF 7100**Fixed DSC VHF**

This compact waterproof unit is ideal if you're after a low cost, rugged VHF with DSC capabilities. It has all international, USA and Canadian channels plus 10 weather channels. The large clear display with four text lines shows DSC messages, boat position, time and channel name.

KEY FEATURES

- Fistic with channel, power and priority channel buttons
- Super large, clear FSTN display with amber backlighting
- Top mount PTT button for right or left handed use
- Instant access to up to 3 of your favorite channels with easy user programming
- Select from several scanning modes such as All-Scan and Favourite Channel scan modes
- Automatic GPS boat position and time when connected to a GPS receiver
- Local/Distant feature eliminates unwanted interference in high traffic areas
- Call logs with instant call back capability

SUPPLIED WITH

Fistic, flush and bracket mounts, dust cover



 **HOT
PRODUCT!!**

ORDER CODE - ZPLA51889**NAVMAN VHF 7200****Fixed DSC VHF**

The VHF 7200 has all the features of the VHF 7100 but with a larger display that can also display barometric pressure and fishing conditions. The Barometric Weather Forecasting feature monitors barometric pressure with digital graphing technology so you can see the current reading and trends to assist in determining rapid changes in air pressure. Icons show predicted weather conditions.

More unique features are the "Track-Your-Buddy" and position polling options. Connect your GPS to the VHF and your boat position can be transmitted to other vessels with compatible radios. The other vessels' positions are also transmitted to you - connect the VHF 7200 to a Trackfish6000 series chartsounder and it will plot up to three "buddy" locations on the chart - very useful when sailing in company and also an excellent safety feature when visibility drops.

KEY FEATURES

- All the features of the VHF 7100
- Full function fistic with alphanumeric keypad
- Built-in Barometer / Temperature sensors and a 5-level icon weather forecasting display

SUPPLIED WITH

Fistic, flush and bracket mounts, dust cover



- Favourable fishing conditions indicator
- Security lockout option
- Channel naming function
- MMSI, Group and ATIS directories

ORDER CODE - ZPLA51888**NAVMAN 3100 SERIES****Sail Instruments**

Featuring giant wide angle displays, NMEA compatibility, the advanced NavBus™ system, complimented by the Tracker and Trackfish chartplotters, which allows complete freedom to build the system you want using any combination of displays with only one set of transducers.

ALSO AVAILABLE (NOT SHOWN)

- REPEAT3100 NMEA/GPS repeater
- MULTI3100 Combination Speed/Depth system
- WIND 3100 Digital Wind System

NAVMAN SPEED3100**Speed/Log System****KEY FEATURES**

- Speed 0-50kts with trend indicator
- Average & max speed, Log and resettable trip
- Elapsed time and countdown timer
- Water temperature

**ORDER CODE - ZPLA40630****NAVMAN DEPTH3100****Depth System****KEY FEATURES**

- Depth 0.9-120m with trend indicator
- Deep, Shallow & Anchor watch alarms
- Keel offset
- 3 damping levels

**ORDER CODE - ZPLA40626****NAVMAN WIND3150****Wind System****KEY FEATURES**

- Apparent wind angle/speed
- True wind with log input
- Max wind speed alarm
- Digital Wind3100 display also available

**ORDER CODE - ZPLA46601**

A closer look...

What is SmartCraft™?

Navman and Mercury have teamed up to offer complete electronic integration with single and dual engine boats.



An exclusive Mercury breakthrough, SmartCraft engine monitoring data is available on most Fish, Tracker and TrackFish displays with the addition of the optional Gateway.

SmartCraft offers real time engine related data and other critical information on your Navman instrument. Engine data forwarded to the display provides you with vital navigation information and engine control. It also features audible alarms and adjusts the throttle if necessary.

SmartCraft is available on Mercury OptiMax and 4-stroke EFI Mercury engines.

KEY FEATURES

- Realtime boat diagnostics from over 40 sensors
- RPM, engine temp, oil level, temp and pressure
- Fuel flow, fuel remaining and fuel consumption
- Digital engine tachometer input
- Water, waste, fuel and oil levels
- Trim angle and steering angle
- Troll control (cruise control)



NAVMAN FUEL3100

Petrol Engine Fuel Computer

Calculates your economy rating using fuel and speed data from a speed transducer or GPS, allowing the engines to be run at optimal throttle settings taking into account sea conditions, boat type and load. Compatible with all Navman speed transducers.



KEY FEATURES

- Instant fuel flow
- Engine hours counter
- Day and total petrol used
- Low fuel and low battery alarms
- Graphical fuel gauge and fuel remaining in tank
- Shared data via NMEA or NavBus
- With GPS input - fuel economy, average and max speed for trip, total, current and remaining distance

ALSO AVAILABLE

- Diesel3200 - Monitors diesel flow with a positive displacement transducer on the inlet and return lines to accurately calculate fuel consumption.

SUPPLIED WITH

- Fuel3100 - Inline fuel gauge sensor
- Diesel3200 - Single engine kit with dual fuel flow transducers

ORDER CODES - CALL FOR DETAILS

NAVMAN TRACKFISH6000 SERIES

Colour Chartplotter/Fishfinders

Combines all the functions of the popular Tracker and Fish ranges, with the same simplicity of use, top performance, powerful output and high quality resolution display. They also offer extra capabilities such as petrol or fuel management as well as SmartCraft compatibility.

KEY FEATURES

- 3000 waypoints, 25 routes, 5 tracklogs
- Inbuilt fuel computer (requires optional fuel kit)
- SmartCraft compatible - display oil level, engine throttle, consumption, flow and more
- C-Map NT and MAX charts with tide and port data
- 32Mb embedded basemap
- When connected to a DSC VHF, can display the real time position of 3 other boats on the chart
- 50/200kHz dual frequency fishfinder, 600W RMS
- Max depth 600m

MODELS AVAILABLE

- Trackfish6500 - 5in colour display, external GPS
- Trackfish6600 - 7in colour display, external GPS

ORDER CODE TRACKFISH6500 - ZPLA53327
 ORDER CODE TRACKFISH6600 - ZPLA49600



NAVMAN TRACKER5000 SERIES

GPS Chartplotters

Navman have updated their popular range of daylight view chartplotters - they're all C-Map MAX compatible and have an inbuilt 16Mb regional background map. Additional models have also been added offering screen sizes from 3.8in up to 6.4in.

KEY FEATURES

- WAAS / EGNOS enabled GPS
- Inbuilt fuel computer (requires optional fuel kit)
- SmartCraft compatible (colour units only)
- 3000 waypoints, 25 routes, 50 waypoints per route
- Dedicated waypoint key and Man Over Board key
- NavBus to interface with 3100 Sailing Instruments



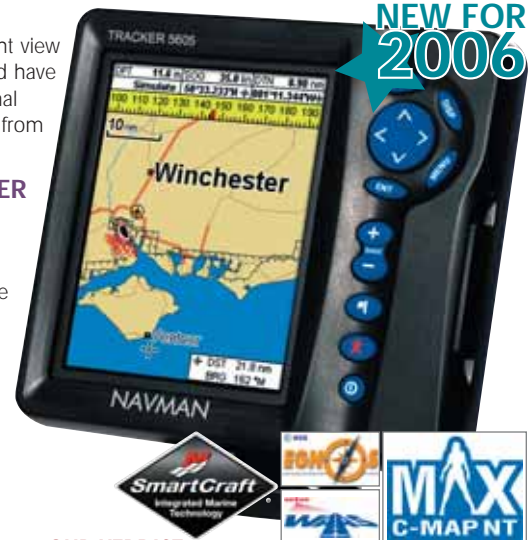
MODELS AVAILABLE

- Tracker5380 - 3.8in colour, external GPS
- Tracker5380i - 3.8in colour, internal GPS
- Tracker5430 - 4.3in mono, external GPS
- Tracker5430i - 4.3in mono, internal GPS
- Tracker5505 - 5in colour, external GPS
- Tracker5505i - 5in colour, internal GPS
- Tracker5605 - 6.4in colour, external GPS

SUPPLIED WITH

12 channel GPS antenna

ORDER CODES - CALL FOR DETAILS



OUR VERDICT

One of the best range of budget colour chartplotters available and one of our top sellers - they're rugged with bright clear displays plus all the bells and whistles you get with C-Map MAX cartography.

NAVMAN FISH4000 SERIES

Fishfinders

Expanded range of compact fishfinders with displays from 3.5in to 6.4in. All use Navman's latest SBNI digital sonar technology with automatic gain and range settings to maximise signal enhancement, bottom recognition and noise rejection. All are designed to withstand the elements and are fully waterproof to IPX7 standard.

KEY FEATURES

- Sunlight viewable display (colour models)
- Sonar, A-Scope and Zoom
- SmartCraft compatible (4433, 4380, 4505, 4605 only)
- Fuel computer (4433, 4380, 4505, 4605 only) requires fuel kit
- Low battery, shallow, deep, water temperature and temperature rate of change alarms



MODELS AVAILABLE

- Fish 4350 - 3.5in colour, 200W, 200kHz, max depth 180m
- Fish 4380 - 3.8in colour, 200W, 200kHz, max depth 180m
- Fish 4431 - 4.3in mono, 150W, 200kHz, max depth 180m
- Fish 4433 - 4.3in mono, 250W, 83/200kHz, max depth 230m
- Fish 4505 - 5in colour, 600W, 50/200kHz, max depth 600m
- Fish 4605 - 6.4in colour, 600W, 50/200kHz, max depth 600m

ORDER CODES - CALL FOR DETAILS



MAGELLAN EXPLORIST210

Handheld GPS

Compact, lightweight GPS receiver with an 8Mb built-in European basemap including major roads, parks, waterways, airports etc. 22Mb of internal memory is available for saving track files, routes or for downloading optional MapSend software. The PC style file memory system stores 380 files, each containing 500 points of interest, plus 150 track logs each with 2000 track points.

KEY FEATURES

- 8Mb built-in European basemap
- 22Mb additional internal memory
- Stores 190,000 waypoints/POI
- 150 track logs each with 2000 track points



NEW FOR 2006



SUPPLIED WITH

USB PC interface cable

ORDER CODE - ZMAGEXP210

MAGELLAN EXPLORIST XL

Colour Handheld GPS Chartplotter

A compact rugged GPS with a 3.5in colour glare resistant display. Pre-loaded with an 8Mb European basemap with major roads, waterways, airports and parks etc, 30Mb of internal memory is also available for saving track files, routes etc or expanding the mapping capabilities by downloading detailed cartography for sailing, hiking, camping or driving using optional MapSend software.

KEY FEATURES

- 3.5in colour, glare resistant display
- 30Mb internal memory
- Unlimited memory via SD cards
- Uses 2 x AA batteries

NEW FOR 2006



SUPPLIED WITH

USB PC interface cable

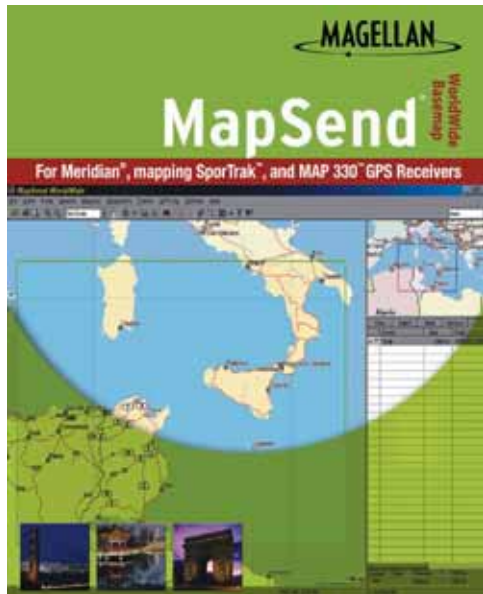
ORDER CODE - ZMAG980812-03



HOT PRODUCT!!

MAPSEND W/WIDE BASEMAP

Cartography



The WorldWide Basemap includes 100m contour lines, major roads, rivers, lakes and basic topography for the whole world on just one CD Rom.

View the maps on your PC and simply select the desired area and download the information into your GPS ready for your next adventure. When producing route information, a vertical altitude profile can be displayed showing ascents and descents over a over a distance for that route - taking the work out of counting contours on individual maps to work out time and distance for those difficult legs. View your movements in and around the surrounding area as your journey progresses.

KEY FEATURES

- 100m contour lines, rivers, lakes, coastlines
- Cities, towns, major roads, railways etc
- Vertical altitude profile
- World wide coverage - search worldwide points of interest

ORDER CODE - CALL FOR DETAILS

MAPSEND DIRECTROUTE

Street Cartography



Download detailed street maps via a PC to your Magellan handheld GPS and be guided to your destination with turn-by-turn visual and audio prompts.

Enter your destination and DirectRoute will calculate the shortest route and guide you to your destination. View your movement in and around the surrounding streets as your journey progresses.

KEY FEATURES

- Detailed street level maps for the UK and most of Western Europe
- Search by address, city or co-ordinates
- Visual and audio turn-by-turn prompts
- Automatically calculates the shortest journey time
- View your journey and surrounding areas

ORDER CODE - ZMAG980654-02

MAPSEND TOPO GT BRITAIN

Land Cartography



Detailed Topographical mapping information based on Ordnance Survey maps can now be downloaded from your PC to your Magellan handheld GPS. Use your PC to check the topography, trails, and tens of thousands of points of interest in over a dozen categories. Select the desired area and download the information into your GPS.

KEY FEATURES

- Roads, lanes, footpaths, tracks, woods, contour lines, lakes, rivers, mountains, dams, caves and other points of interest
- View elevations anywhere on the map
- Create vertical profiles to check if the terrain is too steep to navigate and create alternative routes
- Know the terrain in advance

ORDER CODE - ZMAGMSTOP-GB



Also consider...

Handheld GPS by -

• Garmin

page 12,13

FURUNO M1623

6in Mono LCD Radar

A great value high contrast LCD radar for pleasure craft and small fishing boats. Radar echoes are shown in four shades of gray on the 6in Silver Bright display. It offers detailed images of coastline and targets at short ranges thanks to narrow pulselengths and dual IF bandwidths. The display is waterproof, making it ideal for cockpit or flybridge installation.

In the Watchman mode, the antenna is stopped and the screen displays nav data only. The radar wakes up at a specified time interval (5, 10 or 20 min) and operates for 1 minute. If a target enters the Guard Zone, an audible alarm sounds and the radar goes into its normal operating mode, cancelling the Watchman mode. The alarm may also be set to work for a target leaving the Zone.

KEY FEATURES

- Omnipad cursor control
- 15in 2.2kW radome, max range 16nm
- Excellent screen clarity, day and night modes
- Normal, Off-Centre & Watchman operating modes
- EBL, VRM, TLL output (Target Lat/Long), Cursor Lat/Long input/output, Echo Trail, Guard Zone Alarm

SUPPLIED WITH

2.2kW 15in radome antenna & 10m cable

ALSO AVAILABLE

- M1715 - as the 1623, but with a 7in mono display and an 18in, 2.2kW radome, max range 24nm



- 12 range scales
- Interface with GPS and chart plotter
- Waypoints displayed as "lollipop" marks
- Automatic receiver tuning
- Automatic sensitivity and anti-clutter controls
- Low power consumption

OUR VERDICT

The 1623 is quite simply the best radar you'll pick up for under £1000. Great performance and excellent value for money.

ORDER CODE M1623 - ZFURM1623

ORDER CODE M1715 - ZFURM1715

FURUNO LS4100

5in LCD Mono Fishfinder

Easy to use dual frequency mono fishfinder with the highest resolution display in its class.



KEY FEATURES

- 50/200kHz, 300W RMS, max depth 500m
- White Line and "Sea-Through" technology discriminates echoes from the sea bed
- Unique bottom lock fish alarm provides consistent audible bottom fish detection in varying depths
- Displays speed and wind data if interfaced with relevant sensor
- Mini-navigator feature provides 12 "goto" waypoints with programmable names

ALSO AVAILABLE

- LS6100 - all the features of the LS4100, but with a 6in mono display.

SUPPLIED WITH

Transducer must be specified when ordering



ORDER CODE LS4100 - ZFURLS4100
ORDER CODE LS4100 - ZFURLS6100



FURUNO NX300D

Dual Mode Navtex Receiver

One of our most popular products, this compact dual frequency (518/490kHz) unit has a high contrast 4.5in mono display and receives current and early-warning weather reports and navigation alerts worldwide, within 200-400nm of shore.

KEY FEATURES

- Printout available via PC
- Can be used as a Nav data repeater
- Low power consumption

SUPPLIED WITH

Antenna



ORDER CODE - ZFURNX300D



FURUNO F130

Instrument System

A range of modular multifunction displays and transducers that connect via a central processor unit. Styled to compliment the NavNet range, the F130 instruments integrate easily with Furuno's range of radars, autopilots and navigation displays.

KEY FEATURES

- Large, clear backlit LCD displays
- Easy to use
- Digital and analogue displays
- Interfaces with autopilot, radars and plotters

INSTRUMENTS AVAILABLE

- Multi Control
- Speed
- Depth
- Wind Data
- Compass Data
- Multi XL
- Analogue Wind Angle
- Analogue Rudder Angle
- Analogue Speed Trim
- Analogue Compass
- Analogue Steer Pilot

SUPPLIED WITH

Transducers must be specified when ordering

ORDER CODE MULTI CTRL - ZFURFI-301

ORDER CODE SPEED - ZFURFI-302

ORDER CODE WIND - ZFURFI-303

ORDER CODE COMPASS - ZFURFI-304

ORDER CODE MULTI XL - ZFURFI-305

ORDER CODE ANALOGUE WIND - ZFURFI-306

ORDER CODE ANALOGUE SPEED - ZFURFI-308

ORDER CODE ANALOGUE COMPASS - ZFURFI-310

ORDER CODE STEER PILOT - ZFURFI-307



FURUNO GP7000 & GP7000F

Colour 7in Widescreen Chartplotter and Chartsounder

Colour GPS Chartplotter and Chartsounder with Course Plot, Nav Data, Steering and Highway display modes. The course plot mode is useful for obtaining general information about surrounding sea areas. The Nav data mode clearly shows important navigational information with large text, which is easy to see even from a distance. The steering mode and highway mode assist the operator in following a predetermined route.

The 50/200 kHz dual frequency echosounder can be displayed full screen or split screen with the course plot mode.

KEY FEATURES

- Chartplotter (GP7000) or combination chartsounder (GP7000F)
- User friendly operation with rotary control knob and softkeys
- 12 channel GPS EGNOS/WAAS receiver
- Enhanced chart redraw speed
- Split screen display
- Dual chart slots
- North up, course up or auto course up
- 5000 waypoints, 200 routes, 12,000 trackpoints
- 7 language operation
- Dual frequency 50/200kHz echosounder with 600W or 1kW transmitter, max depth 1200m
- Bottom-lock, Bottom-zoom, Marker-zoom, A-scope or normal presentation with one or two frequencies



HOT PRODUCT!!



ORDER CODE GP7000 - ZFURGP7000
ORDER CODE GP7000F - ZFURGP7000F

FURUNO GP32 & GP37

Fixed GPS

High performance GPS navigator with large backlit waterproof display. Available as a 12 Channel WAAS enabled GPS (GP32) or dGPS (GP37).

KEY FEATURES

- Navigational data, track plotter and highway displays
- Graphic and numerical data display
- Up to 950 waypoints, 50 routes, 1,000 trackpoints
- Low power consumption - less than 3W
- NMEA output
- PC interface available



ORDER CODE GP32 - ZFURGP32
ORDER CODE GP37 - ZFURGP37

BEST SELLER



FURUNO SC60

4.5in LCD Satellite Compass



GPS-based compass offers unrivalled accuracy of up to 0.8°, ideal for Radar, AIS, ECDIS or any equipment that normally requires a gyrocompass.

KEY FEATURES

- Four display modes - Compass Rose, Steering, Nav Data and Heading
- Tri-antenna reduces effect of roll, pitch and yaw
- Heading output in NMEA0183, IC 61162-1 and AD-10 (25ms update)
- Short settling time - only 4 minutes

SUPPLIED WITH

3 axis sensor

ORDER CODE - ZFURSC60

FURUNO FM2721

Fixed VHF Radio

Includes all International, US marine and weather channels. Fully featured handset with Distress Alert button in cradle.

KEY FEATURES

- Easy to use
- Clear backlit LCD display
- Full function DSC Class D
- Numeric keypad channel selection
- Dual channel watch, 16 and selected channel

SUPPLIED WITH

Cradle, loudspeaker, transceiver module

ALSO CONSIDER

- Simrad RS82
- Raymarine Ray240E



ORDER CODE - ZFURFM2721

FURUNO FCV620

5.6in LCD Colour Fishfinder

Fantastic new high performance 50/200kHz dual frequency 600W fishfinder with wide angle sunlight viewable display with a wide viewing angle. Selectable single, dual, zoom and Nav data modes.

NEW FOR 2006



KEY FEATURES

- Rotary knobs for gain and mode select
- Digital filter adjusts gain, STC and output power for outstanding detection in shallow and deep water
- Cruising and fishing auto modes
- Fast pulse transmission rate for outstanding shallow water echo presentation
- TLL output for GPS plotter display
- 8/16/64 colour echo presentation for displaying subtle echo images
- Customised nav data display when interfaced with appropriate sensors
- Swivel mount bracket or flush mountable

ALSO AVAILABLE

- FCV-585 - has all the features of the FCV-682 but with a 8.4in display and up to 1kW output (requires MB-1100 matching box)

ORDER CODE FCV620 - ZFURFCV620
ORDER CODE FCV585 - ZFURFCV585

FURUNO NAVPILOT 500

Inboard Autopilot System



Modular system for sail and power. The control unit features a 4.6in LCD display, rotary control knob and dedicated function keys. Advanced self-learning steering algorithm adjusts to suit the boat's speed, trim and draft as well as tide, wind and weather effects.

KEY FEATURES

- Advanced Auto automatic ground tracking control
- FishHunter feature steers boat in a holding pattern around target when connected to fishfinder or radar
- NavNet compatible

ALSO AVAILABLE

- NavPilot 511 - all the features of the NavPilot 500, but with a compact control head



SUPPLIED WITH

Control unit, course computer, heading sensor and rudder feedback unit. Drive must be specified.

ORDER CODES - CALL FOR DETAILS

FURUNO NAVNETBB

Black Box Multifunction System

Now get NavNet with a larger display! The NavNet Black Box system separates the display from the control unit and processor, allowing you to use virtually any size multi-sync PC monitor with a VGA input.



KEY FEATURES

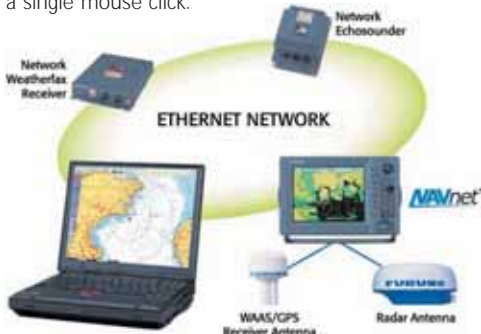
- Standard external video input/output
- Radar options from 18in 2.2kW radome up to a 6.5ft 12kW open array, maximum range of 72nm
- Off-center, Echo trail, North Up display modes
- True or Relative Motion etc
- Chart-radar overlay
- 11 - 40V DC

MAXSEA NAVNET

Navigation Software

Produced exclusively for Furuno, MaxSea NavNet is a comprehensive user-friendly navigation tool offering increased efficiency and exclusive capabilities including seamless chart display, advanced weather forecast overlay, real-time 3D seabed images and more. Its intuitive tool palette makes operation fast and easy.

MaxSea NavNet can analyse data from multiple sources by integrating with the NavNet system, sharing data from radar, GPS, echosounder, weatherfax receiver and more. This allows advanced features such as on-screen radar chart overlay. But MaxSea NavNet takes the overlay facility one stage further, enabling you to overlay information on top of the chart - tracks, marks, hazards, currents, water temperature etc. Each layer can be shown and hidden with a single mouse click.



KEY FEATURES

- Shared navigation data with the NavNet network
- Full control of NavNet displays
- Compatibility with most chart formats, both raster (ARCS, Mapmedia, Seafarer, Maptech, NDI, Softchart) and vector (S57, C-Map 93 and NTPC)
- Advanced ARPA and AIS mobile target tracking
- Free up to date ocean conditions and weather forecasts via email
- PBG (Personal Bathymetry Generator) creates 2D and 3D images of the seabed

ORDER CODE - CALL FOR DETAILS

FURUNO NAVNET2

Multifunction Navigation Displays

Advanced integrated navigation system incorporating GPS, chart plotter, radar and fish finders. Available as 7in mono, 7in colour and 10.4in colour LCD TFT displays and also 10in mono CRT display.



EDITOR'S CHOICE

KEY FEATURES

- Supplied standard as Chartplotter or Chartradar
- Ethernet based network
- Multiple display option
- Each display operates as an individual unit or as part of the network
- Over 50 different display modes
- Common user interface and control panel
- Selectable background colours
- Optional NTSC/PAL interface allows for TV/VCR/DVD/PC video input (10.4in LCD only)

NAVIGATION FEATURES

- 12 channel network GPS antenna
- C-Map Max chart compatible
- Head-up, North-up, Course-up and True Motion Radar display modes
- Chartplotter display modes : Course Plot, Alpha-numeric Nav Data, Steering and Highway
- 8000 trackpoints, 1000 waypoints, 200 routes

RADAR FEATURES

- Radar power output ranges from 2.2kW to 6kW
- Split screen and Radar overlay
- Dual EBLs and VRMs
- Radar Guard Zone

ECHOSOUNDER FEATURES (REQUIRES ETR6)

- Dual-frequency (50/200kHz), 600W or 1kW RMS fishfinder option

Tech info

NavNet Accessories

The following accessories are available -

Network GPS	12 channel active antenna
PAL Board	Allows TV/Video input
ETR6	Network sounder module
Network Sounder	Dual Frequency 50/200kHz plastic or bronze through hull transducers for network sounder module
ARPA Module	Max 10 targets, 10in LCD/CRT only



ALSO CONSIDER

- Garmin GPSMap3006C & 3010C
- Raymarine E Series
- Simrad CX NavStation

CUSTOMER COMMENTS

"I can't imagine sailing without my NavNet radar and chartplotter - an essential crewmember"

- B. Albrecht, Manchester

OUR VERDICT

For value, performance and reliability, NavNet is hard to beat. The wide range of display options and flexible configuration make them ideal for any application - power, sail or fishing.

ORDER CODE - CALL FOR DETAILS

Gyro Compass	PG1000 Fluxgate (required for ARPA)
FAX 30	Weatherfax module

Navnet Hubs & Cables

Interconnecting Cables	For linking Dual Station / Repeater
Ethernet Hub	Allows for multiple stations or 2+ units including Network Sounder
Ethernet Cable	Links NavNet equipment together. Available in various lengths

SIMRAD CX SERIES NAVSTATION

Multi-Function Navigation Displays



New for 2005, the CX NavStation is a multifunction display that can act as a GPS chartplotter, radar, echosounder and navigation hub. The NavStation is a full-function chartplotter as a standalone unit and is supplied with a compact SDGPS antenna. To add radar or echosounder functionality, simply fit a radar antenna or the echosounder transducer module. Information can be shared between the NavStation and Simrad instrumentation and autopilots via the proprietary SimNet high speed bus. The NavStation is available with 6, 7, 10 and 15in displays. A dedicated 6in chartplotter, the CP31 is also available.

CHARTPLOTTER FEATURES

- Uses the new C-Map NT MAX cartography
- Dual chart slots - display two charts simultaneously at different scales
- 35,000 waypoints, 50,000 tracks, 10,000 routes
- NMEA interface to instruments, radar or autopilot
- Port & Tidal flow information
- Quick scale
- North Up, Head Up or Nav Up modes
- True or Relative Motion

RADAR FEATURES (CX34, 44 and 54 ONLY)

- Radar chart overlay
- User selectable 24 or 48 revolutions per minute.
- Multi range - 1/8nm to 48nm, or 36/24nm
- Dual range - 2 radar pictures with individual range settings
- Quick-range. Single key access to nine fixed range settings
- Parallel radar and chart image
- North Up and Head Up modes
- True or Relative Motion
- 2 or 4 kW radome or 3 or 4ft 4 kW open array scanner

ECHOSOUNDER FEATURES (NOT CP31)

- Dual frequency - selectable 38, 50 & 200kHz
- Single or dual frequency display
- Two 1000W transmitters (8,000W PP)
- Accurate up to 1800m (5400 ft)
- Night setting
- Depth and Fish Alarms

SUPPLIED WITH

Power cable, interface cable and SDGPS antenna. Radar antennas, echosounder modules and transducers must be specified separately

ALSO CONSIDER

- Raymarine E Series
- Garmin GPSMap3006C & 3010C



NAVSTATION RANGE

- CP31 - 6in colour display, chartplotter only
- CX33 - 6in daylight view display
- CX34 - 7in daylight view display
- CX44 - 10in sunlight view display
- CX54 - 15in sunlight view display

ORDER CODE CP31 - CALL FOR DETAILS
ORDER CODE CX33 - CALL FOR DETAILS
ORDER CODE CX34 - CALL FOR DETAILS
ORDER CODE CX44 - CALL FOR DETAILS
ORDER CODE CX54 - CALL FOR DETAILS



Tech info

Simrad NavStation Accessories

The following accessory options are available with these units - please specify when ordering.

Depth transducers

- P319D 200kHz plastic through hull
- P52 200kHz transom mount
- C50/200 50kHz/200kHz dual frequency
- C38/200 38kHz/200kHz dual frequency

GPS Engines

- GPS-5 14 channel parallel GPS antenna
- MGL-3 dGPS antenna

Radar Antennas

- RB714A 2kW 18in radome 24nm range
- RB715A 4kW 2in radome 36nm range
- RW716A 4kW 3ft/4ft open array 48nm range
- RW717* 6kW 4ft/6ft open array 72nm range
- RW718* 12kW 4ft/6ft open array 96nm range



WHERE ARE THE PRICES?
TURN TO BACK PAGE



Also consider...

Navigation Displays -

- Garmin page 16
- Navman page 19
- Raymarine page 3-5

SIMRAD RD68

Combined VHF/DSC Radio



The RD68 offers all the functions of a fully featured VHF radio and Class D DSC controller in one compact package. Softkey operation makes it very easy to use. External speaker socket. Rugged weather-proof construction and cast alloy enclosure.

KEY FEATURES

- Backlit display & keys
- Intuitive softkey operation
- Full function VHF and DSC Class D controller
- Flush mountable
- NMEA0183 input

SUPPLIED WITH

Standard mounting bracket and fistmic (telephone handset available as optional extra)

ALSO CONSIDER

- Icom M402, Navman 7200, Silva S12

ORDER CODE - ZSIMSIRD68



SIMRAD TP10, TP22 & TP32

Cockpit Tillerpilots

Simrad's Tillerpilots offer unparalleled reliability, power and low current consumption along with supreme course keeping ability and quiet operation.



EDITOR'S CHOICE

- TP10 (Up to 9m) - Budget standalone Tillerpilot.
- TP22 (Up to 10m) - Faster hard over time plus SimNet and NMEA compatibility.
- TP32 (Up to 12m) - Top spec high performance pilot with 85kg thrust and ultra-fast hard over time.

KEY FEATURES

- Powerful, low current consumption
- Waterproof double sealed design
- NMEA interfacing to GPS & windvane (TP22/32)
- SimNet compatible (TP22/32)
- Optional external fluxgate sensor (TP22/32)
- Hand remote option (TP22/32)

SUPPLIED WITH

Mounting kit, deck socket (TP22/32 only)

ALSO CONSIDER

- Raymarine ST1000+, ST2000+

ORDER CODE TP10 - ZSIMTP10
ORDER CODE TP22 - ZSIMTP22
ORDER CODE TP32 - ZSIMTP32



SIMRAD WP10 & WP32

Cockpit Wheelpilots

Self contained Wheelpilot range. Innovative design makes fitting easy and requires no holes to be drilled (apart from routing the cable). These units can easily be fitted in 15 minutes. Requires round pedestal steering system.



- WP10 (Up to 12m) - Basic standalone model.

- WP32 (Up to 13m) - As WP10 but with SimNet and NMEA interface capability.

KEY FEATURES

- Powerful, low current consumption
- Weatherproof design
- NMEA interfacing to GPS & windvane (WP32)
- SimNet compatible (WP32)
- Optional external fluxgate sensor (WP32)
- Hand remote option (WP32)

SUPPLIED WITH

Keypad cover, standard mounting bracket (mounting bracket for wide pedestals, extra long guide rods and a square adaptor kit are also available)

ALSO CONSIDER

- Raymarine ST4000W+

ORDER CODE WP10 - ZSIMWP10
ORDER CODE WP32 - ZSIMWP32

SIMRAD AP25

Inboard Autopilot System

Building on the successful AP20 series - one of the best inboard autopilot systems available - the AP25 offers supreme performance with a wide range of drives, junction boxes, compasses and rudder reference units to suit virtually any kind of boat.



KEY FEATURES

- NMEA0183 and NMEA2000 compatible
- Proportional rate rudder control
- Follow Up and Non Follow Up Modes
- Advanced Wind Steering (AWS)
- Direct windvane interface
- Multifunction display can act as instrument repeater
- Up to seven control units can be fitted

SUPPLIED WITH

Mini gyro rate compass. Drives etc must be specified.

ALSO AVAILABLE

- AP26 - Same flexibility as the AP25, but a simpler control head



- AP27 - Handheld control unit with the same features as the AP26

ALSO CONSIDER

- Raymarine Smartpilot
- Navman G-Pilot

ORDER CODE AP25 - CALL FOR DETAILS
ORDER CODE AP26 - CALL FOR DETAILS
ORDER CODE AP27 - CALL FOR DETAILS

SIMRAD RS86/RS87

Multi Station System VHF



Modular VHF system with a choice of two different stations - a fully featured handset (RS87) or a fixed panel display (RS86). DSC Class D with single key access to All Ships and Distress Alert category calls under a lift up cover. iDSC enables you to display and control DSC call information on your CX series NavStations.

KEY FEATURES

- Up to four stations
- Scrambler option
- Intercom speakers option
- Dual Fog and Loudhailer options
- NOAA Weather alert
- SimNet compatible
- NMEA in/out

ALSO CONSIDER

- Raymarine Ray240E



ORDER CODE RS86 - ZSIMRS86F
ORDER CODE RS87 - ZSIMRS87

SIMRAD RS81/RS82

Single/Dual Station System VHF



If you want a simple single station handset VHF with dual station capability and don't need all the extra bells and whistles of the RS87, here is the solution. The RS81 is simple to use and features an integral loudspeaker - perfect where space is limited. To upgrade to dual station with full Class D DSC, simply add the RS82 handset. For a non-DSC dual station system, fit an additional RS81 handset.

KEY FEATURES

- Up to two stations
- Scrambler option
- Intercom between handsets
- NMEA in/out



ORDER CODE RS81 - ZSIMRS81
ORDER CODE RS82 - ZSIMRS82

NASA CLIPPER NAVTEX

Dual Frequency LCD Navtex Receiver



This dual frequency Navtex offers an ideal solution for those looking for an easy to fit, flush mount device. Ultra clear 16 line LCD screen with white backlighting.

KEY FEATURES

- Matches Clipper instruments
- Dual frequency (490 & 518kHz)
- Low power consumption (50mA)

SUPPLIED WITH

Compact stub antenna

**CUSTOMER COMMENTS**

"For the price, I can thoroughly recommend this Navtex as a great buy"

- N. West, Newton Ferrers

ORDER CODE - ZNAS010.011

NASA AIS RADAR

AIS Receiver



Standalone AIS receiver/plotter specifically designed for the leisure boat market. The display shows AIS carrying vessels in a format normally associated with conventional radar. A trail of previous positions clearly shows the relative track of all the targets on the screen.

KEY FEATURES

- 1, 2, 4, 8, 16 and 32nm ranges
- Display shows SOG, target vessel's name, MMSI and current Lat/Long
- White backlit LCD display
- Low power consumption



ORDER CODE - ZNAS010.180

NASA WEATHERMAN

RTTY Telex Receiver



Compact Radioteletype weather forecast receiver. Forecasts are transmitted continuously on several frequencies simultaneously, but it can be set to record data from areas of interest only. Memory can store several thousand lines of text.

KEY FEATURES

- High contrast 16 lines x 40 character display
- Power save auto timer on backlight
- Spectrum screen for simple signal analysis

SUPPLIED WITH

Active micro antenna

ORDER CODE - ZNAS010.060

NASA HF3M

MF/HF Receiver



Covering 30kHz - 30MHz, the HF3M includes a weatherfax interface and software enabling you to download weather pictures onto your PC.

SUPPLIED WITH

Antenna, PC cable, weatherfax software, power supply

ORDER CODE - ZNAS010.028

NASA CLIPPER

Instrument System

If you are on a budget, these low cost but well constructed 110mm instruments are well worth considering.

**KEY FEATURES**

- **Log** - log, trip log and trend indicator, kts/mph
- **Depth** - keel/waterline offset, deep/shallow alarms, trend indicator, feet or metres
- **Wind** - "digital analogue", selectable pointer style
- **Duet** - combines the Clipper Speed and Depth
- **Compass** - true or magnetic display, steering function, off-course alarm
- **GPS Repeater** - COG, SOG, Lat/Long, BTW, DTW, XTE, rolling road display

SUPPLIED WITH

Transducer and cabling

ORDER CODE LOG - ZNAS010.019

ORDER CODE DEPTH - ZNAS010.020

ORDER CODE WIND - ZNAS010.023

ORDER CODE DUET - ZNAS010.021

ORDER CODE COMPASS - ZNAS010.022

ORDER CODE GPS REPEATER - ZNAS010.024

ALSO AVAILABLE ▶

NASA Cruiser instruments



ACR/Entel/MOBi-Alert

EPIRBs, VHF, MOB Monitor

WHERE ARE THE PRICES?
TURN TO BACK PAGE

ACR RAPIDFIX

406MHz EPIRB with GPS interface

The Rapidfix doesn't have an internal GPS, instead it has an infrared optical GPS interface - the fastest means of delivering GPS precision, and without the need for a direct wired link to the GPS. The Rapidfix transmits on 406MHz (COSPAS-SARSAT) with your unique digitally-coded distress signal. Once the Search And Rescue services are in the vicinity, they can then home in to your precise location using the 121.5MHz SAR homing frequency.

KEY FEATURES

- Flashing confirms data transmission from GPS
- Patented proprietary electronics package for faster, more stable transmission
- 48 hrs operating life at -40°C
- Waterproof to a depth of 10m
- Lanyard coil retained with all around cover for non-tangling deployment
- Inbuilt strobe light for enhanced location in poor visibility conditions
- Three-position switch for easy test of battery, EPIRB and GPS operation
- 5-year limited warranty
- 5-year replacement life lithium battery, 11 year storage life



SUPPLIED WITH

Long life lithium battery, manual bracket (optional Cat1 hydrostatic release bracket available)

ORDER CODE - ZACRRF406-CAT2



ACR GLOBALFIX 406GPS

406MHz GPS EPIRB

EPIRB with integral GPS. Transmits on 406MHz (COSPAS-SARSAT) and 121.5MHz.

KEY FEATURES

- 48hrs operating life at -40°C, 72hrs at -21°C
- Lanyard coil has all around cover to avoid tangling
- Inbuilt strobe light for location in poor visibility
- Three-position switch for easy test of battery, EPIRB and GPS
- 5-year limited warranty
- 5-year replacement life lithium battery

SUPPLIED WITH

Long life lithium battery, manual bracket (optional Cat1 hydrostatic release bracket available)

ORDER CODE - ZACRGF406-CAT2



ACR SATELLITE2 406

406MHz EPIRB

The world's smallest 406 MHz EPIRB approvable worldwide with 121.5MHz homing transmitter and inbuilt strobe light.

KEY FEATURES

- Single, three position switch for easy test and operation
- Lanyard coiled on recessed spool to avoid tangling
- 5 year limited warranty
- Operating life 48 hours at -40°C
- 5 year replacement life (11 year useful life) lithium battery

SUPPLIED WITH

Long life lithium battery, manual bracket (optional Cat1 hydrostatic release bracket available)

ORDER CODE - ZACRST406-CAT2



ACR AQUAFIX I/O and AQUAFIX I

Personal GPS EPIRB/PLB

The AquaFix I/O features both an internal GPS and a GPS interface, which enables the unit to immediately transmit your position on activation instead of having to wait for GPS signal acquisition. The internal GPS can then continue to update your position, even after having left the boat. The AquaFix I has all the features of the I/O model, but without the internal GPS.

KEY FEATURES

- The smallest personal EPIRB available
- 406MHz COSPAS-SARSAT and 121.5MHz SAR homing transmitters
- Waterproof

SUPPLIED WITH

Two lithium battery packs, holster, bulkhead mount bracket, GPS interface cable

ORDER CODE AQUAFIX I/O - ZACRAF406-GPS

ORDER CODE AQUAFIX I - ZACRAF406



ENTEL HT640

Waterproof Handheld VHF Radio

The submersible HT640 marine transceiver has been developed to offer a high level of durability and operational reliability, allowing it to be depended upon in the most extreme conditions.

KEY FEATURES

- Rugged construction against shock, vibration, dust & moisture
- 1 & 5 Watts RF power
- Superior audio quality
- Battery life indicator
- Built in voice scrambler
- 12 hour duty cycle
- Up to 32 private channels

SUPPLIED WITH

1500mAh Li-Ion battery, 12v charger, mains adapter, belt clip, carry strap

ORDER CODE - ZENTHT640



MOBI-LERT

Man Overboard Monitoring System

One of the biggest fears of all mariners is falling overboard - even in temperate climates your life expectancy is measured in minutes once you're in the water, so it's vital that you're picked up as quickly as possible. MOBI-Alert is the world's first truly reliable and effective automatic man overboard alarm and recovery system that comprises a fixed console and a series of compact "pendant" personal transmitters which can be clipped to wet weather gear. In the event of someone falling overboard, the alarm is immediately raised and the console gives live position data enabling rapid pickup.

KEY FEATURES

- Instant Alert provides the immediate means to recover
- Automatic activation - alarm is raised even if crewmember is incapacitated
- Individually encoded pendants
- LED on pendant indicates battery charge status
- Can be set to trigger events on activation such as Danbuoy release, self steering trip, engine cut-out, autopilot head to wind command, EPIRB release etc - ideal safety backup for single handers
- Available with two or six pendants

SUPPLIED WITH

Base station console, two or six pendants, pendant charging station

ORDER 2xPENDANT KIT CODE - CALL FOR DETAILS

ORDER 6xPENDANT KIT CODE - CALL FOR DETAILS



Turn to the back page for pricing and ordering info NOW!

LOWRANCE GLOBALMAP 3500C

5in Colour Chartplotter

With a high resolution sunlight viewable TFT display - a great product for a great price.

KEY FEATURES

- 5in, 256 colour TFT screen
- Stunning 480 x 480 pixel resolution
- Superb sunlight viewability
- 1000 waypoints, 100 routes
- NMEA2000 compatible
- Uses Navionics Gold cartography



SUPPLIED WITH

GPS antenna/WAAS receiver

ORDER CODE - ZLOW117-40



LOWRANCE X67C

3.5in Colour Echosounder

KEY FEATURES

- 256 colour VGA screen
- Bright sunlight view 320 x 240 pixel resolution
- 800W, 200kHz transducer with speed
- Uses digital processing technology

SUPPLIED WITH

Transom mount transducer

ALSO AVAILABLE

- X47 - 4in greyscale display
- X102C - 5in colour display, 2400W
- X107DF - 5in colour display, 50/200kHz, 2400W



ORDER CODES - CALL FOR DETAILS

LOWRANCE GLOBALMAP 7500C

10.4in Colour Chartplotter

KEY FEATURES

- 10.4in 256 colour TFT screen
- Superb sunlight viewability
- 800 x 600 pixel resolution
- 1000 waypoints, 100 routes
- NMEA2000 compatible
- Uses Navionics Gold cartography
- Ethernet expansion port for Radar



SUPPLIED WITH

GPS antenna/WAAS receiver

ORDER CODE - ZLOW117-49



LOWRANCE LMS332C

5in Colour Chartplotter/Sounder

KEY FEATURES

- 5in sunlight view 256 colour TFT screen
- Stunning 480 x 480 pixel resolution
- 1000 waypoints, 100 routes
- 200kHz, 2400W transducer with speed, using digital processing technology
- NMEA2000 compatible

SUPPLIED WITH

WAAS GPS, transom mount transducer

ALSO AVAILABLE

- LMS337DF - with 50/200kHz T/M transducer
- LCX110C - with 10.4in display, 8000W output

ORDER CODES - CALL FOR DETAILS



SILVA S15

Fixed DSC VHF Radio/Navtex



Great value DSC radio which is also a full function GPS navigator (with storage of up to 50 waypoints) and dual frequency Navtex receiver when interfaced with a compatible GPS or Navtex antenna.

KEY FEATURES

- Large LCD display - viewable even in direct sunlight
- Rugged fully waterproof construction
- Waterproof fistmic with alphanumeric keypad, channel select and DSC function buttons
- Programmable memory scan
- Security keylock allows operation only on selected channel

ORDER CODE - ZSILS15N

SILVA S10

Fixed DSC VHF Radio

All the features of the S15, without the GPS navigator and Navtex receiver option.



ORDER CODE - ZSIL28015

SILVA STAR

Instrument System

An economical entry level system that's easy to install and use. Designed for standalone use or as a system of two instruments and up to three transducers, waterproof displays with large digits, backlit screens and buttons.

SILVA STAR LOG

KEY FEATURES

- Boat speed in kts, mph and km/h
- Log and Trip
- Includes through hull log transducer



ORDER CODE - ZSIL22111

SILVA STAR WIND

KEY FEATURES

- Analogue and digital display
- 60° & 180° scales
- Apparent Wind Speed and Angle
- True Wind Speed and Angle (when linked to speed log).



ORDER CODE - ZSIL22104

SILVA STAR SEA DATA

KEY FEATURES

- Boat speed in kts, mph and km/h
- Log and Trip
- Depth in M or Ft
- Shallow & Deep alarms
- Water temperature
- Includes through hull log & depth transducers

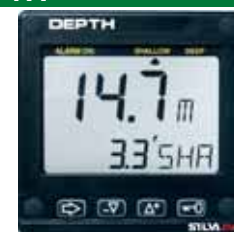


ORDER CODE - ZSIL22444

SILVA STAR DEPTH

KEY FEATURES

- Depth in M or Ft
- Shallow & Deep alarms
- Includes through hull depth transducer



ORDER CODE - ZSIL22112

SILVA STAR COMPASS

KEY FEATURES

- Analogue and digital display
- True & Magnetic heading
- Steer memory

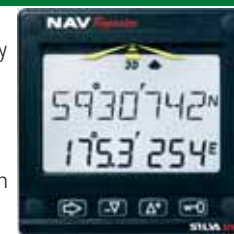


ORDER CODE - ZSIL22102

SILVA STAR NAV REPEATER

KEY FEATURES

- NMEA repeater - display data from any NMEA GPS
- Position, COG, SOG, BTW, DTW, XTE
- Man Overboard function



ORDER CODE - ZSIL21315-1



McMURDO RESCUE

EPIRB

Third generation fully GMDSS compliant EPIRB that operates in conjunction with the COSPAS-SARSAT international satellite search and rescue system. Once rescue units are at the distress scene the 121.5MHz homing transmitter and high intensity xenon strobe light aid final location even in poor visibility. The EPIRB is programmed with a unique serial number which must be registered with the national authorities. Where permitted, it can be re-programmed with the vessel's satellite or radio call sign.

KEY FEATURES

- Battery life 48hrs when activated
- Pinpoints your position via satellite, worldwide
- Fully automatic float free housing available
- 5+ year shelf life

SUPPLIED WITH

Quick release mounting bracket, Lithium battery



ORDER CODE - ZMCM050.011

McMURDO PRECISION

GPS EPIRB

Specifically designed to meet the needs of leisure boaters and commercial ships alike, the Precision offers all the features of the Rescue EPIRB plus an integral 12 channel parallel GPS receiver and meets international GMDSS approval standards. The benefit of the integral GPS is that the position can be updated throughout the operating life of the beacon and it has the ability to provide a position when the EPIRB has been activated and is drifting at sea. The 121.5Mhz homing transmitter and high intensity xenon strobe light further assist the Search And Rescue services to pinpoint your position.

KEY FEATURES

- Integral GPS - no external receiver or interface required
- Visual indication of GPS acquisition
- Global alert via COSPAS-SARSAT satellites
- Position up-date throughout beacon operating life

SUPPLIED WITH

Quick release mounting bracket, Lithium battery



ORDER CODE - ZMCM050.012

McMURDO FASTFIND PLUS

406MHz GPS PLB

Handheld PLB with integral GPS featuring the same advanced technology found in the award winning Precision EPIRB. Designed using miniature components to fit into an ergonomically styled compact casing, it employs a simple 3 stage manual operation and features user replaceable battery packs, available for use in temperatures of -20°C and -40°C. It is ideal for alerting the rescue services of an emergency during maritime, light aircraft and outdoor activities (where licensing allows).

KEY FEATURES

- Compact and lightweight
- 406MHz transmitter, 121.5MHz homing frequency
- Integral GPS receiver
- Battery life 5 years, transmission life 24 hrs



McMURDO FASTFIND

406Mhz PLB

All the features of the Fastfind Plus, but without the internal GPS. Alert signal to rescue services within 90 mins, typical positional accuracy to within 3nm

FASTFIND & FASTFIND PLUS SUPPLIED WITH

Battery pack, case and Kevlar lanyard

ORDER CODE FASTFIND PLUS - ZMCM050.013

ORDER CODE FASTFIND - ZMCM050.014



McMURDO S4 RESCUE

SART

A 9GHz X-Band Radar transceiver that has been designed for assisting air/sea ship or survival craft rescue operations in accordance with IMO GMDSS requirements. Once activated it will operate for over 96hrs in standby mode.

KEY FEATURES

- Ship or survival craft applications
- 5 year long life replaceable battery pack
- Audio/visual alarm
- Inbuilt test facility
- Internal/external mounting options

SUPPLIED WITH

Mounting bracket, lithium battery

ORDER CODE - CALL FOR DETAILS



ICS NAV6PLUS

Dual Channel Navtex Receiver

The large and easy to read backlit LCD display concentrates Navtex and NMEA data from your GPS or instrument system into one central point. An electronic logbook is updated at regular intervals and can be viewed on-screen or printed out via an optional printer.

KEY FEATURES

- Simultaneous dual channel Navtex receiver
- Sort messages by receipt time/date, station or category
- RS232 data output
- 12 volt operation

SUPPLIED WITH

Dual channel Navtex sensor with 10m cable

ALSO AVAILABLE

- NAV6DUAL - All the features of the NAV6PLUS, but without the GPS or NMEA repeater option
- NAV6PLUS - As the NAV6PLUS, but can be used with insulated shrouds, backstays or multifunction antennas instead of a dedicated Navtex antenna

ORDER CODE NAV6PLUS - ZICS916.01

ORDER CODE NAV6DUAL - ZICS916.00

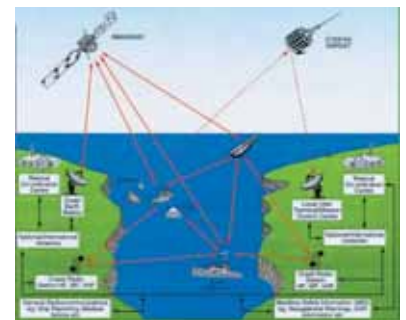
ORDER CODE NAV6PLUS - ZICS920.00



Find out more...

What is an EPIRB?

An Emergency Position Indicating Radio Beacon (EPIRB) is used to alert search and rescue services in the event of an emergency. It transmits a coded message on the 406MHz distress frequency, detected by the COSPAS-SARSAT satellites. Emergency alerts are relayed to the closest automated ground station, which forwards the information to the Maritime Co-ordination Centre where the message is decoded. The distress details and vessel details (taken from the registration details) are then passed to the appropriate rescue co-ordination centre who co-ordinate the relevant Search And Rescue authorities.



What's the difference between an EPIRB and a PLB?

Once the Search And Rescue service are in the area, they need to pinpoint your position directly. McMurdo's Rescue and Precision EPIRBs contain a 121.5MHz location transmitter for this purpose.

That's fine if you're with the EPIRB, but if you're in the water or have become separated from the vessel, you'll still want the rescue services to find you quickly and easily. A Personal Locator Beacon (PLB) transmits on the same 121.5MHz frequency, but is designed to be carried on your person - many quality foul weather jackets have a pocket on the sleeve for this purpose.

And what's a SART?

Generally deployed in the liferaft on a long pole, a Search And Rescue Transponder (SART) performs a similar function to a PLB, the difference being that a SART sends out a 9GHz signal which is detected by a ship's radar, appearing as a dotted line pointing to your position.

SCANSTRUT

Antenna Mounting Solutions

Scanstrut offers a comprehensive range of installation solutions to maximise the performance of your marine electronics. All major antenna brands and models are covered, with options for mounting radar, Satcom, GPS, VHF and TV aerials and navigational lights. For a full product guide and assistance with choosing the right installation package, please call us or visit the Scanstrut website on www.scanstrut.com

SCANSTRUT SC100

Antenna Pole

KEY FEATURES

- Mounts all 2kW and 4kW radomes and smaller satcom domes to any boat
- Innovative, fully adjustable base allows mounting on any surface from vertical to horizontal, including sloping decks and transoms
- Light and GPS bar accessories mount up to two additional small antenna or navigational lights above the radar
- Simple to install, with all fittings supplied
- Can be removed completely for racing, maintenance or winter storage purposes
- New SC120 lifting crane accessory is simple to retrofit and carries up to 30 kgs in weight
- Available in two heights - 1.9m and 2.5m



SCANSTRUT SC2

Antenna Pole Mount System

Ideal for open array radar and larger TV and satcom antenna on 40ft+ boats, SC2 is available as 1m deck mount or 3m and 4m through deck mount poles.

KEY FEATURES

- Deck mounted ideal for cabin roofs and where minimum elevation is required
- Through deck for maximum stability on taller installations. Deck collars & seals ensure a watertight installation
- New SC45R mount for Raymarine 45STV Satellite TV antenna now available
- Proven track record of 100% reliability



SCANSTRUT ADAPTOR PLATES

Satcom Dome Mounts

Suitable for satcom and satTV domes. Reduces the satcom antenna footprint by up to 60%, allowing the easy installation of domes, even where deck space is limited.

KEY FEATURES

- Water tight base seal
- SC50 satcom wedges offer an aesthetic solution to mounting domes on sloping decks - rotating discs can compensate for up to 12° of slope. Compatible with SC45 & SC65 adaptor mounts.



SCANSTRUT POWER TOWER

Powerboat Antenna Mounts

Comprehensive range of radar and small satcom antenna mounts for power boats. Maximises performance by elevating the antenna clear of obstructions. Available in powder coated aluminium, highly polished marine grade stainless steel or composite.



KEY FEATURES

- Maximise antenna performance on powerboats by raising the antenna clear of obstructions.
- Outstanding performance and strength with aesthetic design
- Light and GPS antenna mounting accessories allow the installation of up to two additional small antenna or navigational lights above the antenna
- Choice of heights available, with all fittings included to offer a completely hassle free installation process

SCANSTRUT MAST PLATFORMS

Mast Mounting Brackets

Market leading mast mounts with options for all brands and models of radar. Cable conduit and radar guard accessories available.



KEY FEATURES

- Simple installation onto all masts
- Supplied with safety wire to independently attach scanner to mast.
- New SC16 Satcom mast mount now available

SEA-ME

Active Radar Target Enhancer

Increase the probability that your boat will be seen on ships' radar with this affordable active device. Unlike traditional passive radar reflectors which merely attempt to create a larger radar echo, the Sea-me Radar Target Enhancer is an active system which receives a radar signal, amplifies it and re-transmits it. This ensures a stronger return signal and a more even strength around the full 360° azimuth.

KEY FEATURES

- Creates a boosted radar image equivalent to an object of 63sq m max (34sq m average)
- Up to 6 times the performance of standard passive radar reflectors
- Performance is less affected by heel than standard passive radar reflectors
- Active system emits a stronger signal than it receives
- Operates at X Band (9.32-9.5GHz)
- Indicates when vessel is struck by radar pulse
- Instantly available at the flick of a switch
- Small, light (410g) and easy to install
- Can be fitted using a standard 14TPI antenna mount
- Low power consumption (60mA idle, 260mA transmitting)
- Suitable for sailing yachts, motor cruisers and RIBs



SUPPLIED WITH

Antenna, 24m cable, control box

OUR VERDICT

A very effective solution to a major safety concern for small boat owners.

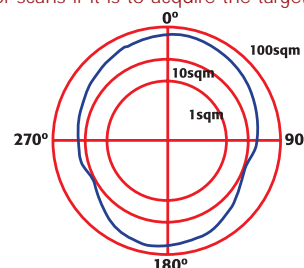
ORDER CODE - ZSEA500.010

i Tech info

Why Fit an Active Radar Target Enhancer?

At night, the range of the masthead light of a sailing yacht of less than 20m is only 3nm and of a sailing yacht of less than 12m only 2nm - a ship making 20kts will cover 3nm in only 9 mins. As they get bigger, travel faster and have lower manning on the bridge, the risk of collision or a close encounter increases. Therefore it's vital that small craft return a strong radar signal if they are to be seen in plenty of time for avoiding action to be taken by ships.

Consistency is also important since most ships today are fitted with ARPA (Automatic Radar Plotting Aid) which needs to obtain a return of 50% of scans if it is to acquire the target



Performance of the radar cross-section area of Sea-me

Echopilot

Forward Looking Sonar

WHERE ARE THE PRICES?
TURN TO BACK PAGE

ECHOPILOT PLATINUM FLS

Colour Forward Looking Sonar



A new FLS with the best range and performance yet. Developed with all the expertise gathered by Echopilot over 13 years of manufacturing Forward Looking Sonar. With greater resolution than previous models, the large transmissive colour LCD can be seen in the brightest sunlight. The use of colour enables enhanced seabed interpretation - the colour of the target depends on its hardness and the strength of echo that it returns. The Platinum is NMEA compatible and can display GPS data. It is designed for flush mounting but there is an optional bracket for wheelhouse use.

KEY FEATURES

- Large colour sunlight-viewable display
- 200m forward range
- Optional wireless link between transducer and instrument for ease of installation
- Optional computer output for interfacing with on board computers

SUPPLIED WITH

200kHz standard or professional transducer with 12m cable

ORDER CODE STANDARD - CALL FOR DETAILS
ORDER CODE PROFESSIONAL - CALL FOR DETAILS

ECHOPILOT BRONZE FLS

Forward Looking Sonar

If you're stuck for space but still want to fit an FLS, the Echopilot Bronze is ideal, contained in a standard 110x110mm instrument-sized case with the latest transmissive LCD technology.

KEY FEATURES

- Simple two key operation
- Forward range 100m, depth range 50m
- Forward alarm
- Optional professional transducer for long keel boats over 35ft

SUPPLIED WITH

200kHz standard or professional transducer with 12m cable

ORDER CODE STANDARD - ZECH133.015
ORDER CODE PROFESSIONAL - ZECH133.016



ECHOPILOT SILVER2 FLS

Forward Looking Sonar



New improved real time forward looking 200kHz sonar with enhanced processing software for improved performance. See underwater obstructions ahead of the vessel rather than just the depth below. Range 20-150m ahead, 10-75m down.

KEY FEATURES

- Manual or Autogain
- History display of sea bed
- Optional log transducer

SUPPLIED WITH

200kHz standard or professional transducer with 12m cable

ORDER CODE STANDARD - ZECH133.010
ORDER CODE PROFESSIONAL - ZECH133.011

ASK US ABOUT INSTALLATION

ECHOPILOT GOLD2 FLS

Forward Looking Sonar

With all the features of the FLS Silver, plus a wider screen and NMEA compatibility allowing it to be connected to external equipment. Log and depth information can be input and output via NMEA.

KEY FEATURES

- Optional Repeater
- Display GPS info - lat/long, BTW, DTW, XTE and waypoint name

SUPPLIED WITH

200kHz standard or professional transducer with 12m cable



ORDER CODE STANDARD - ZECH133.012
ORDER CODE PROFESSIONAL - ZECH133.013

ECHOPILOT WRECK FINDER

Underwater Wreck Locator



Based on the FLS Gold, the Wreck Finder can locate wrecks and other manmade objects on the sea bed. It can be used as a normal 2D FLS as well as a 3D Sidescan, with the wreck finding facility working in both modes. Interfacing with a GPS allows the position of the last 10 wrecks to be stored.

KEY FEATURES

- Forward range 150m, depth range 75m
- Over 11,000sq m of seabed can be displayed
- Realtime 3D image of seabed
- Optional switch box for second transducer

SUPPLIED WITH

200kHz professional transducer with 12m cable

CONTACT US - SEE BACK PAGE

ORDER CODE - ZECH133.018

Find out more...

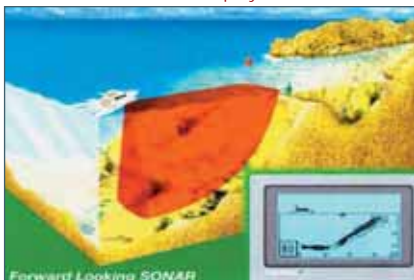
Real Time Forward Looking Technology Explained

Real Time means that the FLS doesn't gradually build up a picture, instead it scans the whole forward view and updates the screen several times a second. An obstruction ahead of the boat will be shown immediately.

The FLS displays a 2D profile of the seabed below and 3-5 times that depth ahead of the vessel on a flat muddy bottom. This increases to 8 or 9 times if the seabed shoals upward and more than this for a large target. Rocky bottoms give especially strong reflections and hard vertical surfaces like quay walls or reefs will often be seen at 150m or more.

In the vertical plane the FLS scans through 90° from straight ahead to straight down.

The FLS is not designed to be a fishfinder, it is a collision avoidance device. In reality it does pick up larger fish and sometimes shoals of smaller fish.



Turn to the back page for pricing and ordering info NOW!

NAVIONICS

Electronic Cartography

Navionics, the leader in electronic charts, offers two main product lines: the popular and established Gold and the new and truly revolutionary Platinum. Both are based on Navionics' exclusive vectorised fully seamless technology, providing clearly legible charts without clutter, holes or discontinuities. Both Gold and Platinum are available in the great value XL3-size extended coverage, which offers the same outstanding detail of the smaller sizes of the past, at up to 16 zoom levels. All the recent plotters compatible with Navionics charts accept standard and expandable cartridge formats, such as Compact Flash, Multi Media Card or Secure Digital.

The new Raymarine E Series Combi displays offer Platinum compatibility - see page 5 or visit www.navionics.com/plotterfacts.pdf for a full list of compatible plotters.

NAVIONICS PLATINUM

Electronic Cartography

Navionics Platinum is the first "Multi-dimensional" electronic chart system for marine chartplotters. In recent years, PC-based applications have enabled users to show charts and other ancillary information using various CDs. However the limitations of using a PC on a boat - in particular if you want the information available on the flybridge or in the cockpit, are well known.

Now, Navionics Platinum offers charts with enhanced features such as 3-D bathymetrics, cruising guides, satellite and photographic images and more - all integrated and geo-referenced on a single plug & play cartridge that could not be simpler to use.

Platinum really makes a difference to navigation awareness and enjoyment.



KEY FEATURES

- All the features of Navionics Gold
- 3D View - view depths and elevations in 3 dimensions with optional photo overlay
- Satellite photo overlay - allows comparison with chart information improving situation awareness
- Panoramic pictures - improve your approach with 15,000 photos of harbours and marinas
- Port services and points of interest - view detailed information, including phone numbers, for port services and points of interest
- Dynamic Tide & Currents - tidal heights, flow speed and direction with graphic indicators
- Coast Pilot Books - geo-referenced coast pilot automatically displays the paragraph pertaining to a selected marina



3D chart view



Panoramic pictures



Satellite photo overlay

NAVIONICS GOLD

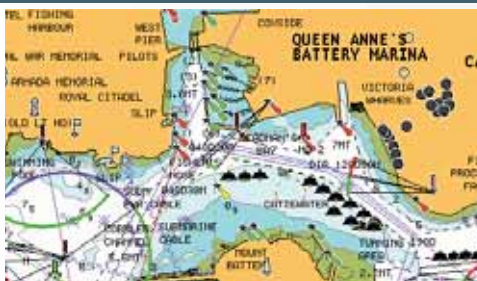
Electronic Cartography

Navionics Gold seamless cartography offers the look and feel of a paper chart with the information and flexibility you expect with vector charts.

Features such as shaded depth contours, coloured light sectors and nav aids represented in full colour with their real shape and appearance makes Gold the boater's user-friendly navigation tool.

KEY FEATURES

- Familiar appearance of a paper chart
- Highly detailed charts
- Intelligent Clarity with IC™
- Nav aids feature Xplain™ clear descriptions
- Superb detail and extended object oriented technology
- Shaded depth contours and spot soundings
- Integral tides and currents database shows tidal heights and speeds
- Port plans and port service guides
- Fully seamless technology
- No clutter. No holes. No discontinuities



Paper chart appearance

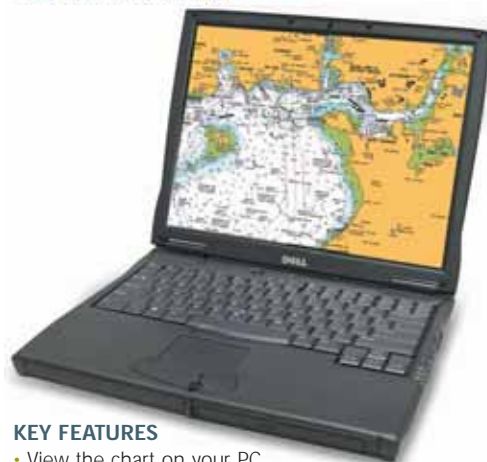


Xplain™ - clear nav aid descriptions

NAVIONICS NAVPLANNER

PC-Based Chart Viewing System

NavPlanner is an easy-to-use software package allowing users to plan their navigation on a PC in the comfort of their home.

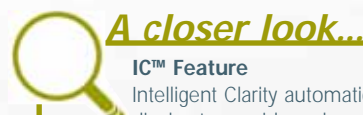


KEY FEATURES

- View the chart on your PC
- Load, create and edit routes, saving them to your chart card
- Transfer data directly from the card to the plotter
- 16 zoom levels, measures distance and bearing, go-to-port function, and many other features

SUPPLIED WITH

Includes a USB chart reader and worldwide basemap chart at 32nm zoom level



A closer look...

IC™ Feature

Intelligent Clarity automatically filters the display to provide a clear, uncluttered display of all necessary information at every zoom level. IC™ allows you to select and remove any non-vital information while keeping more important information at every zoom level. Minor or less relevant information is relegated to more detailed zoom levels -



32nm

4nm

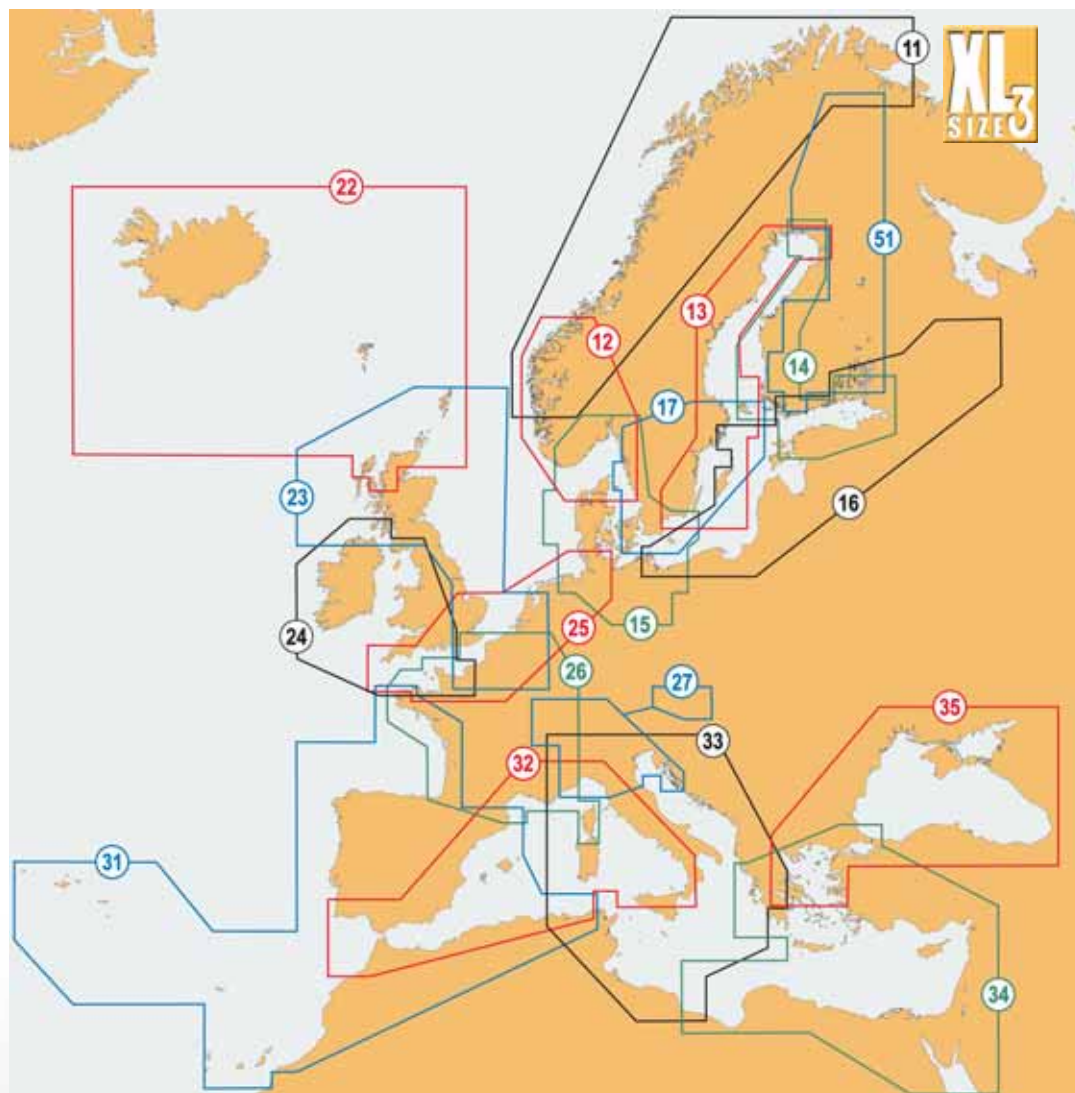


2nm

1/8nm

NAVIONICS GOLD & PLATINUM XL3

Europe



Ref	Gold		Platinum		Description
	Code		Code		
NORWAY NW	11G		11P		NORWAY N & W. VARANGERFJORDEN TO TRONDHEIM
NORWAY SW	12G		12P		NORWAY S & W. STRANDAFJORDEN TO GOETEBORG TO N. DENMARK
SWEDEN E. COAST	13G		13P		SWEDEN E. COAST AARHUS TO MARTINNIEMI.
FINLAND	14G		14P		FINLAND FROM KARLSBORG TO MUHU
OSLO TO DENMARK	15G		15P		DENMARK, GERMANY, SKAGERRAK, SWEDEN W. DELFZIJL TO SKAGEN TO KOLOBRZEG, FLEKKEFJORD TO OELAND S
S. BALTIC	16G		16P		POLAND, RUSSIA, LITHUANIA, LATVIA, ESTONIA, G. OF FINLAND. RUGEN TO HELSINKI
SWEDEN S	17G		17P		SWEDISH LAKES, S. SWEDEN GOETEBORG TO YSTED TO OREGRUND
ICELAND	22G		22P		ICELAND, FAROES, SHETLANDS, ORKNEYS, HEBRIDES & NW. SCOTLAND FROM KYLE RHEA TO HELMSDALE
UK N & E	23G		23P		UK N & E, BELGIUM, UPPER NE. FRANCE BALLYCASTLE BAY & GIRVAN TO DUNCANSBY HEAD TO BRIGHTON MARINA & RADE DE CAEN TO IJSSELMEER, HEBRIDES, ORKNEYS, SHETLANDS, STR OF DOVER, AMSTERDAM
UK SW. & IRELAND	24G		24P		IRELAND, S & W UK., INC W. ENGLISH CHANNEL, ISLE OF MAN, BRISTOL CH, CARDIGAN BAY, CHANNEL ISLANDS, GOLFE DE SAINT-MALO.
UK S. - HAMBURG	25G		25P		S. UK, BELGIUM, NETHERLANDS, S. FRANCE, NW. GERMANY. RIVER CAMEL TO THE WASH & PORTSALL TO FOEHR
FRANCE	26G		26P		ENTIRE FRANCE. NIEUWPOORT TO BREST TO SAN SEBASTIAN & GOLFO DE ROSES
MID EUROPEAN WATERS	27G		-		BODENSEA LAKE. ENTIRE RIVER PO. LAC LEMAN, LAC DE NEUCHATEL, LAC DE BIENNE, LAC DE MORTAT, THUNER SEE, BRIENZER SEE, ZURICHSEE IN SWISS LAKES. PASSAU, LINZ, WIEN & BRATISLAVA IN DANUBE RIVER & NEUSIEDLER SEE. LAGO MAGGIORE, LAGO DI LUGANO, LAGO DI COMO
IBERIA	31G		31P		BISCAY, SPAIN, PORTUGAL, ALGERIA, MOROCCO, STR. OF GIBRALTAR, BALEARICS, CANARIES, MADEIRA, AZORES
MEDITERRANEAN W	32G		32P		ALGERIA, MOROCCO, S. SPAIN, MED. FRANCE, ITALY W. STR OF GIBRALTAR, BALEARICS, CORSICA, SARDINIA, S. SICILY.
C. MEDITERRANEAN	33G		33P		ITALY, ADRIATIC & IONIAN, TUNISIA. DJIDJELLI TO MISRATAH. CORSICA, SARDINIA, SICILY, MALTA, ITALIAN LAKES, LIGURIAN & TYRRHENIAN SEAS
MEDITERRANEAN E	34G		34P		GREECE, TURKEY, SYRIA, ISRAEL, LIBYA, N. EGYPT. CYPRUS, CRETE, SEA OF MARMARA, AEGEAN SEA, SEA OF CRETE, PELOPONNISOS, N. RED SEA.
BLACK SEA	35G		35P		BLACK SEA, AEGEAN SEA. INC SEA OF AZOV, SEA OF MARMARA.
FINNISH LAKES	51G		-		INARIJARVI, PORTTIPAH DAN TEKOJARVI, LOKAN TEKOJARVI, MIEKOJARVI, KEMIJARVI, MOURUJARVI, YLI KITKA, KIANAJARVI, VUOKKIJARVI, OULUJARVI, NUASJARVI, LENTUA, ONTOJARVI, PIELINEN, KOITERE, HOYTIAINEN, VIINIJARVI, PYHASLKA, ORIVESI, PURUVESI, PIHLAJAVESI, HAU, SAIMAA, PURUVESI, PIHLAJAVESI, HAU, SAJVA, KALLAVESI, SUVASVESI, JUOJARVI, PUJULA, KYVYESI, ONKIVESI, PEILAVESI, NILAKKA, PYHAJARVI NEAR IISALMI CITY, KONNEVESI, KOLIMA, KIVIJARVI, KEITELE, PAIJANNE, VUOHJARVI, LANGELMAVESI, VANAJAVESI, LAPPAJARVI, PYHAJARVI

AVAILABLE FOR OVERNIGHT DESPATCH

i Important info

Please Read This First

These pages show the most popular European chart cartridges. All cartridges include every chart available in the area they cover and MAX cartridges also include photographs and tidal flow data for the area they cover.



The MAX Wide and Mega Wide cartridges will **only** work on MAX compatible chart plotters. The C-MapNT+ Wide cartridges will work on **all** NT+ and MAX compatible chart plotters.

Please note that these new NT+ Wide cartridges are equivalent in coverage to the NT+ Superwide cartridges sold between 2002 and 2004.



Please note that NT+ Standard and SuperWide cartridges are no longer available, but a full range of Local cartridges are available for both MAX and NT+, please contact us for more details.

C-MAP MAX PC PLANNER PC-Based Chart Viewing System

NEW FOR 2006



MAX PC Planner turns a home computer into the perfect navigation planning tool. Chart cartridges can be displayed and waypoints or routes planned on the PC, avoiding the need to waste precious sailing time when you get down to the boat. Whether you want to plan a cruise, study the course of the next race or locating a wreck to dive on, PC Planner lets you do it all and you don't even have to get wet!

KEY FEATURES

- User friendly interface
- Load and view C-Map chart cartridges on your PC
- Access the enhanced MAX features
- Load, create and edit routes and marks
- Measure distances and bearing
- Manage waypoint databases
- Display and store previous tracks
- Exchange routes and marks with your chartplotter via blank C-Map user cards.

SUPPLIED WITH

PC Planner software on CD-ROM, USB cable, multimedia cartridge reader

ORDER CODE - CALL FOR DETAILS

C-MAP MAX

Electronic Charting System



MAX is C-Map's dynamic and interactive chart technology that has revolutionised the way electronic charts look and behave. MAX brings new life to the electronic chart, combining unparalleled levels of chart accuracy and detail, striking presentation and a huge collection of new value added data. Building on the incredible success of C-MapNT+ (winner of the NMEA Best Electronic Charts award for the last 6 years), MAX is set to become the new electronic chart standard and is available on all the best chart plotters.

KEY FEATURES

- Embedded photos & coastal land mapping
- Fully animated worldwide tide & current database



- Advanced port information showing local services



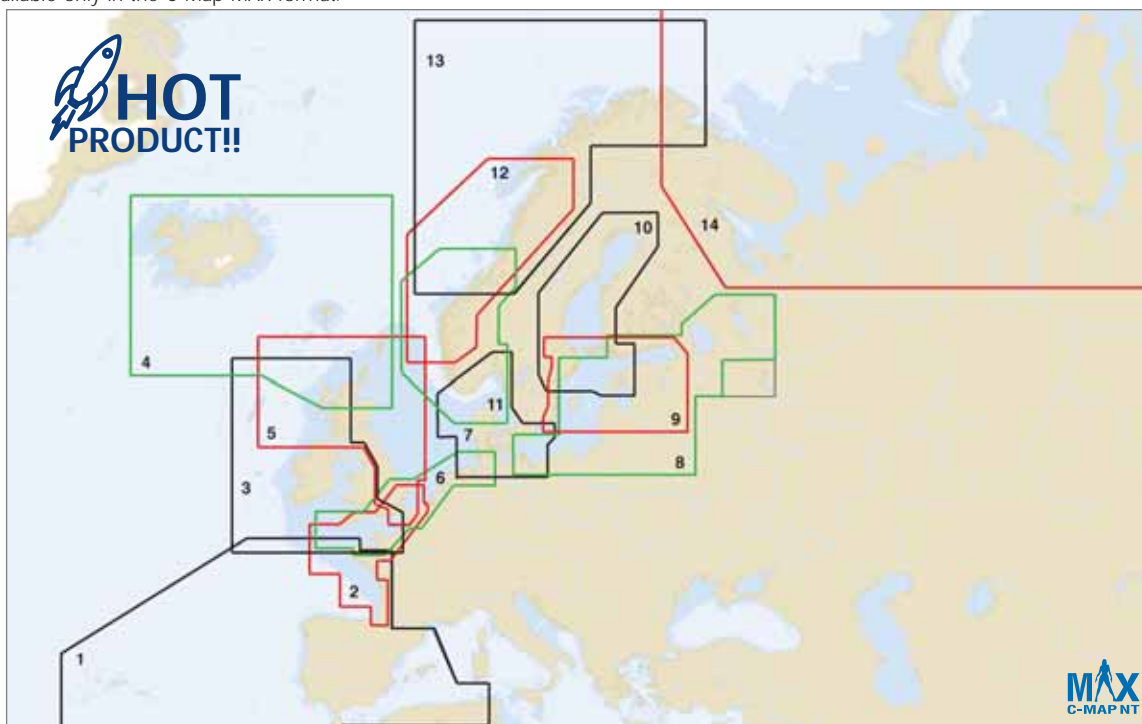
- Perspective view - "rolling road" chart display



C-MAP MAX MEGA WIDE

North Europe

These charts are available only in the C-Map MAX format.



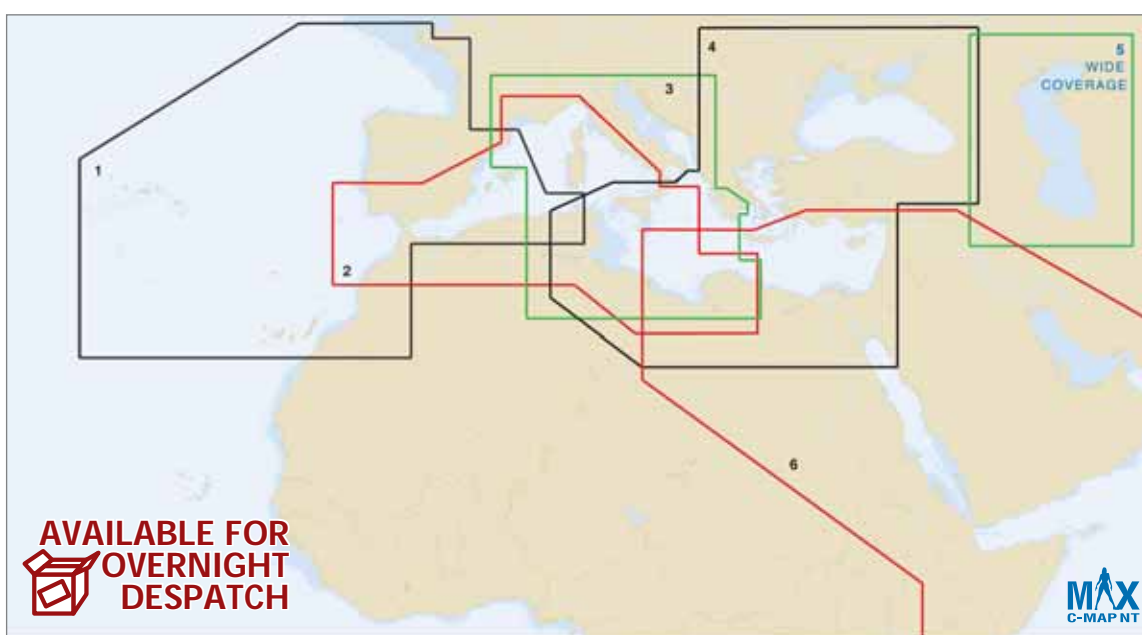
Ref	C-Map MAX Order Code	Description
1.	EW-M005	IBERIAN PENINSULA INC. THE ISLANDS
2.	EW-M006	FRANCE ATLANTIC & ENGLISH CHANNEL
3.	EW-M003	WEST UK & IRELAND
4.	EN-M009	ICELAND, FAROE TO SHETLAND
5.	EW-M002	NORTH EAST UK
6.	EW-M001	ENGLISH CHANNEL TO HAMBURG
7.	EN-M004	GERMANY, DENMARK AND SKAGERRAK

Ref	C-Map MAX Order Code	Description
8.	EN-M006	GULF OF FINLAND, RUSSIAN LAKES & BALTIC
9.	EN-M010	GOTHLAND TO ST PETERSBURG
10.	EN-M012	GULF OF BOTHNIA
11.	EN-M002	SKAGERRAK TO NAMSOS
12.	EN-M003	TRONDHEIM TO LOFOTEN ISLANDS
13.	EN-M001	BERGEN TO KIRKENES
14.	RS-M001	RUSSIAN FEDERATION NORTH EAST

C-MAP MAX MEGA WIDE

South Europe

These charts are available only in the C-Map MAX format.



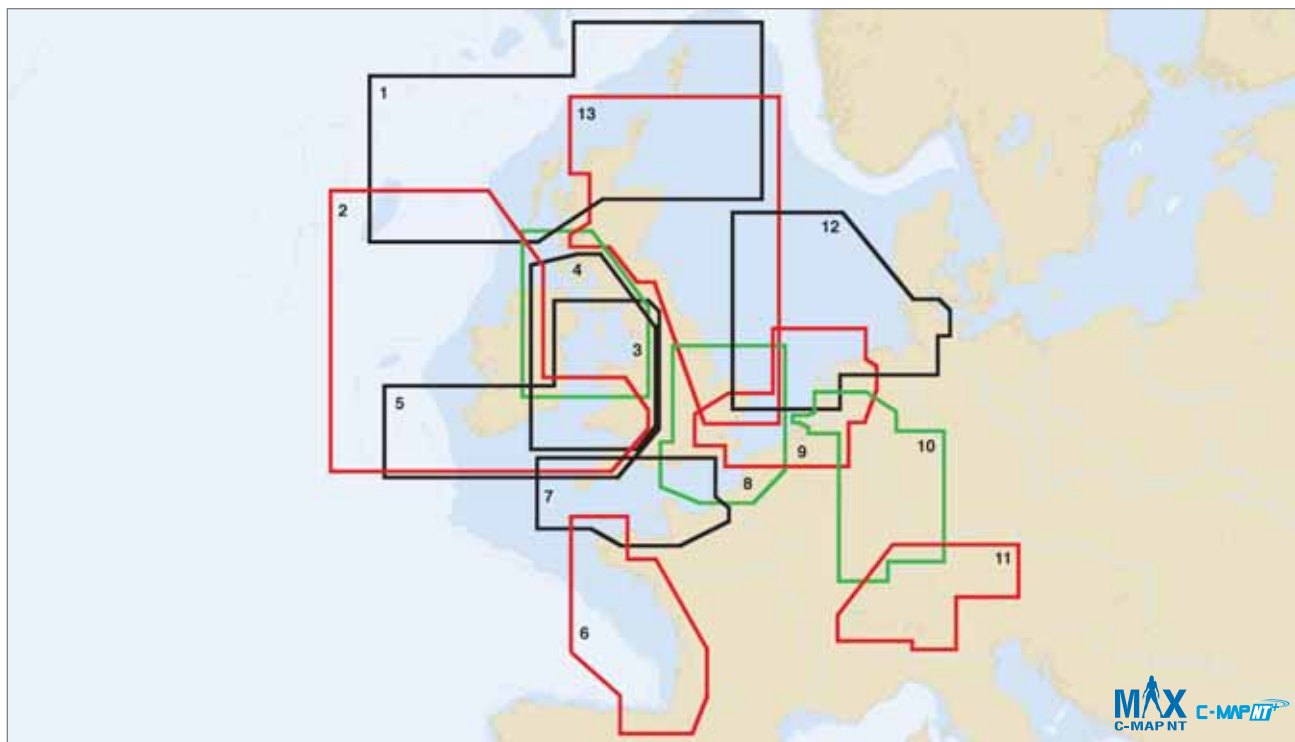
Ref	C-Map MAX Order Code	Description
1.	EW-M005	IBERIAN PENINSULA INC THE ISLANDS
2.	EM-M001	WEST MEDITERRANEAN SEA
3.	EM-M002	CENTRAL MEDITERRANEAN SEA

Ref	C-Map MAX Order Code	Description
4.	EM-M003	EAST MEDITERRANEAN, AEGEAN, BLACK SEA
5.	ME-M005	CASPIAN SEA
6.	ME-M001	MIDDLE EAST, RED SEA, THE GULF

C-MAP MAX & NT+ WIDE

North Europe

These charts are available in the C-Map MAX and C-Map NT+ formats. Note that the NT+ versions do not include the MAX extras.

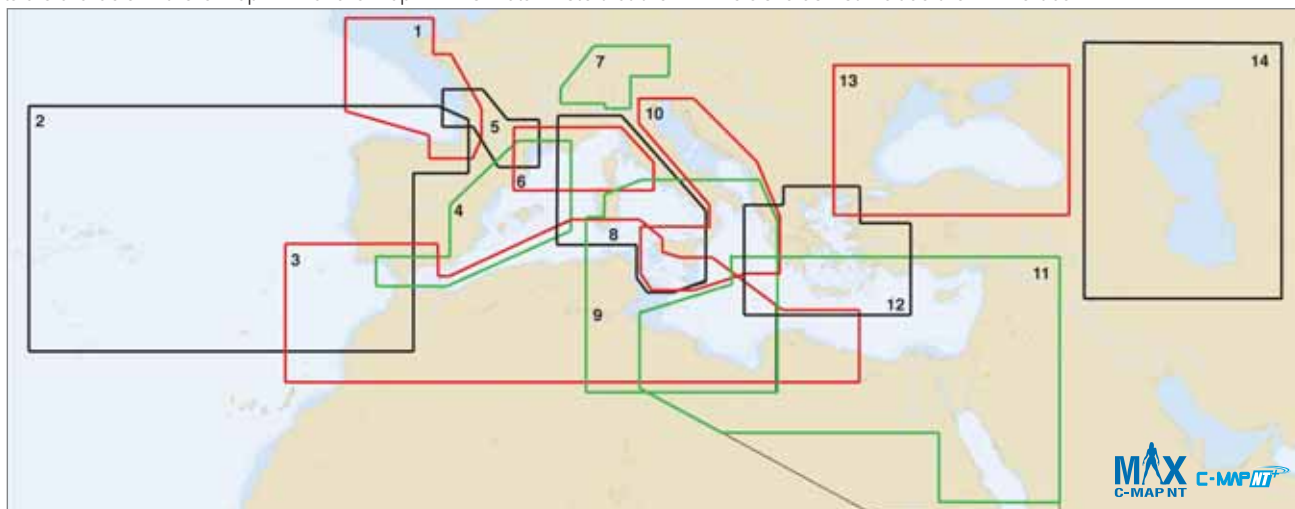


Ref	C-Map MAX Order Code	C-MAP NT+ Order Code	Description	Ref	C-Map MAX Order Code	C-MAP NT+ Order Code	Description
1.	EW-M220	EW-C220	SHETLAND, ORKNEYS & WESTERN ISLES	8.	EW-M205	EW-C205	EASTERN ENGLISH CHANNEL
2.	EW-M208	EW-C208	BRISTOL CHANNEL & W COAST OF IRELAND	9.	EW-M070	EW-C070	NETHERLANDS & BELGIUM
3.	EW-M202	EW-C202	LLEYYN PENINSULA TO FIRTH OF LORNE	10.	EW-M072	EW-C072	RIVER RHEIN
4.	EW-M209	EW-C208	IRISH SEA	11.	EW-M068	EW-C068	CENTRAL EUROPEAN LAKES
5.	EW-M207	EW-C207	BRISTOL CHANNEL & IRISH SEA	12.	EW-M071	EW-C071	IJMUIDEN TO ESBJERG
6.	EW-M203	EW-C203	FRANCE ATLANTIC COASTS	13.	EW-M214	EW-C214	HARWICH TO ORKNEY ISLANDS
7.	EW-M201	EW-C201	CENTRAL ENGLISH CHANNEL				

C-MAP MAX & NT+ WIDE

Mediterranean and N Africa

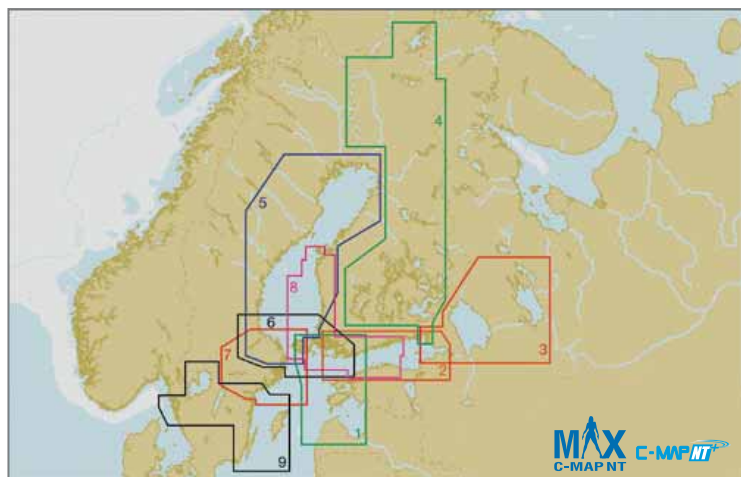
These charts are available in the C-Map MAX and C-Map NT+ formats. Note that the NT+ versions do not include the MAX extras.



Ref	C-Map MAX Order Code	C-MAP NT+ Order Code	Description	Ref	C-Map MAX Order Code	C-MAP NT+ Order Code	Description
1.	EW-M203	EW-C203	FRANCE ATLANTIC COASTS	8.	EM-M094	EM-C094	LIGURIAN AND TYRRHENIAN SEA
2.	EW-M204	EW-C204	IBERIAN PENINSULA, AZORES & MADEIRA	9.	EM-M095	EM-C095	LOW TYRRHENIAN SEA, TUNISIA, LIBYA
3.	AF-M201	AF-C201	AFRICA MEDITERRANEAN NORTH	10.	EM-M097	EM-C097	ADRIATIC SEA
4.	EM-M100	EM-C100	SPAIN MEDITERRANEAN COASTS	11.	ME-M201	ME-C201	NE AFRICA MED & MIDDLE EAST COASTS
5.	EM-M103	EM-C103	CANAL DU MIDI	12.	EM-M104	EM-C104	AEGEAN SEA
6.	EM-M101	EM-C101	FRANCE MEDITERRANEAN COASTS	13.	EM-M102	EM-C102	BLACK SEA AND MARMARA
7.	EN-M068	EN-C068	CENTRAL EUROPEAN LAKES	14.	EM-M005	EM-C005	CASPIAN SEA

C-MAP MAX & NT+ WIDE

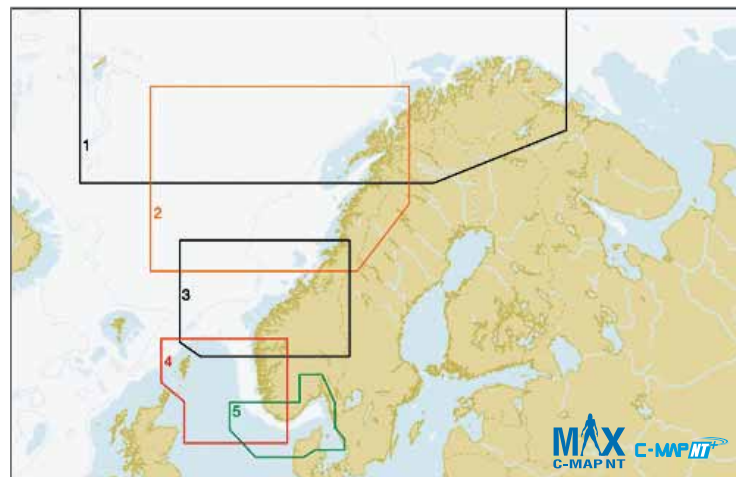
Baltic Sea, Gulf of Bothnia & Finland



Ref	C-Map MAX Order Code	C-MAP NT+ Order Code	Description
1.	M-EN-M327	M-EN-C327	NORTHERN BALTIC
2.	M-EN-M325	M-EN-C325	GULF OF FINLAND
3.	M-EN-M604	M-EN-C604	RUSSIAN LAKES
4.	M-EN-M326	M-EN-C326	FINLAND LAKES
5.	M-EN-M259	M-EN-C259	GULF OF BOTHNIA
6.	M-EN-M260	M-EN-C260	AALAND PASSAGES
7.	M-EN-M257	M-EN-C257	NORRKOEPING TO GAEVLJE
8.	M-EN-M330	M-EN-C330	VAASA TO KOTKA
9.	M-EN-M256	M-EN-C256	INLAND SWEDEN

C-MAP MAX & NT+ WIDE

Norwegian Coasts

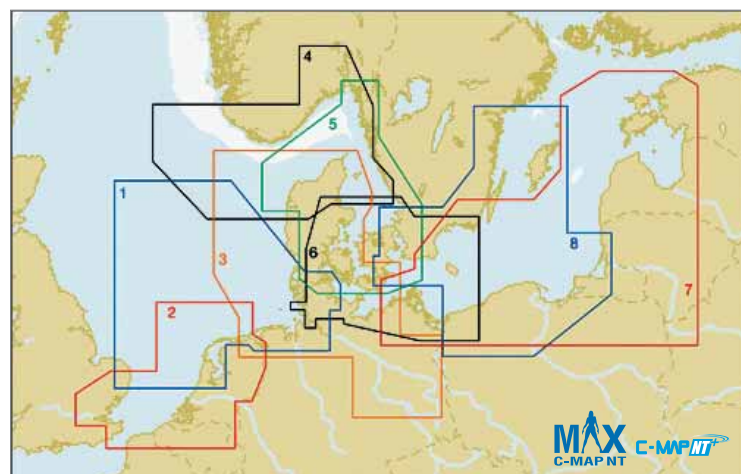


Ref	C-Map MAX Order Code	C-MAP NT+ Order Code	Description
1.	M-EN-M571	M-EN-C571	VESTFJORDEN TO KIRKENES & SVALBARD
2.	M-EN-M569	M-EN-C569	NAMSOS TO SENJA ISLAND
3.	M-EN-M568	M-EN-C568	SOGNEFJORDEN TO TOSENFJORDEN
4.	M-EN-M566	M-EN-C566	MANDAL TO FOERDE
5.	M-EN-M565	M-EN-C565	SKAGERRAK, GOETHEBORG TO EGBERG

AVAILABLE FOR OVERNIGHT DESPATCH

C-MAP MAX & NT+ WIDE

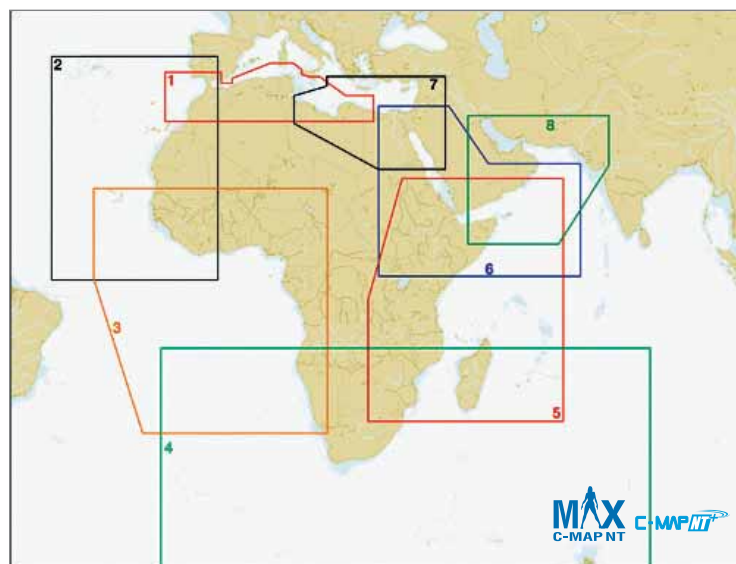
Benelux, Germany, Poland & Denmark



Ref	C-Map MAX Order Code	C-MAP NT+ Order Code	Description
1.	M-EN-M071	M-EN-C071	IJMUIDEN TO ESBJERG
2.	M-EN-M070	M-EN-C070	NETHERLANDS AND BELGIUM
3.	M-EN-M159	M-EN-C159	NORTH GERMANY & WESTERN DENMARK
4.	M-EN-M565	M-EN-C565	SKAGERRAK, GOETHEBORG TO EGBERG
5.	M-EN-M253	M-EN-C253	WESTERN SWEDEN
6.	M-EN-M160	M-EN-C160	EASTERN DENMARK
7.	M-EN-M706	M-EN-C706	ESTONIA, LATVIA, LITHUANIA, POLAND
8.	M-EN-M255	M-EN-C255	SOUTH EASTERN SWEDEN

C-MAP MAX & NT+ WIDE

Africa & Middle East



Ref	C-Map MAX Order Code	C-MAP NT+ Order Code	Description
1.	M-EN-M201	M-AF-C201	AFRICA MEDITERRANEAN NORTH
2.	M-AF-M202	M-AF-C202	W AFRICA AZORES, CANARIES, CAPE VERDE
3.	M-AF-M203	M-AF-C203	WESTERN AFRICA, CENTRAL
4.	M-AF-M204	M-AF-C204	SOUTHERN AFRICA
5.	M-AF-M205	M-AF-C202	EASTERN AFRICA
6.	M-ME-M202	M-ME-C202	RED SEA TO ARABIAN SEA
7.	M-ME-M201	M-ME-C201	NE AFRICA MED & MIDDLE EAST COASTS
8.	M-ME-M203	M-ME-C203	THE GULF TO GULF OF ADEN

CONTACT US - SEE BACK PAGE

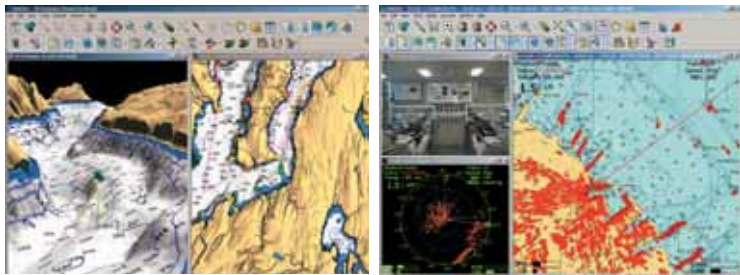
This is just a small selection of the worldwide C-Map MAX & NT+ coverage - please call us for details of other regions.

NOBELTEC VNS VERSION 8.0

Visual Navigation Suite Software

Powerful yet simple navigation, VNS features real-time tracking, quilting for seamless chart integration, an automatic RouteWizard, unlimited route and waypoint creation, integrated ETA calculator and autopilot support. Also includes Nobeltec's ChartBlending and ChartDraping features, enabling you to combine different chart types together for even greater chart detail. The Passport World Folio CD is included and contains high-quality vector charts of the entire world. Regions can be purchased and unlocked with a phone call. Choose between Small, Large and XL Regions for the charts that you need.

For real-time GPS tracking, VNS is compatible with any NMEA GPS and also supports waypoints and route data transfers from the GPS.



KEY FEATURES

- Compatible with a wide range of vector, raster and photo chart formats
- Customisable toolbars and console
- Powerful place and name search tool
- Course up chart rotation and 3D navigator
- Night vision colour modes
- Split screen display for multiple chart viewing
- Tide and current overlays
- AIS target tracking
- DSC radio polling and tracking
- DirectX enabled video camera input

**NEW FOR
2006**

ORDER CODE - CALL FOR DETAILS

NOBELTEC ADMIRAL VERSION 8.0

Navigation Software

The most powerful electronic charting solution available, Admiral builds on the success of the award winning Visual Navigation Suite by adding advanced features designed to solve navigation challenges in an entirely new way. Advanced features include vessel scaling and Vessel Management System software.

The Passport World Folio CD is included and contains high-quality vector charts of the entire world. Regions can be purchased and unlocked with a phone call. Choose between Small, Large and XL Regions for the charts that you need.



KEY FEATURES

- All the features of Nobeltec VNS Version 8.0
- Display Admiral on up to seven monitors using a single computer
- GlassBridge Network - create a complete navigation network using multiple computers sharing NMEA data, radar overlay, nav objects and Passport Charts
- Track line colouring
- Comprehensive radar target tracking (requires InSight Radar box)
- Dual radar support
- Display up to four video camera feeds

RECOMMENDED SYSTEM

Nobeltec VNS, Admiral and IR2 are powerful software suites and for best results should be run on a PC system with adequate processing power, system memory and graphics processing. We recommend using Nobeltec products with a DigitalYacht marine PC system. Call us now to discuss your requirements and we will be pleased to recommend the exact setup to meet your needs.

ORDER CODE - CALL FOR DETAILS

**NEW FOR
2006**

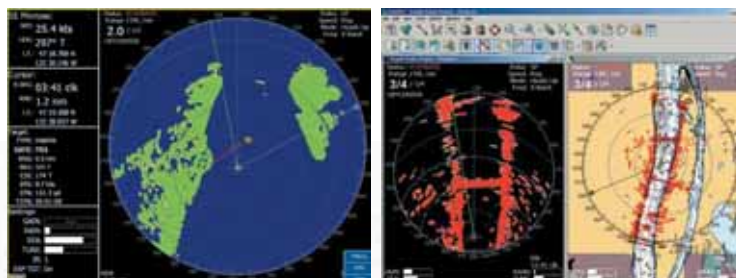
NOBELTEC INSIGHT RADAR2

PC Radar System



The all-new IR2 combines your PC with Nobeltec's powerful VNS or Admiral navigation software and Radar to create the ultimate navigation system. IR2 offers unparalleled chart plotting and radar performance directly onto your PC monitor. IR2 surpasses traditional radar systems through its use of the award-winning Visual Navigation Suite (VNS) and Nobeltec Admiral navigation programs which make the IR2 easy-to-use, affordable to update and provide functionality not found on other radars.

A wide range of radar antennas are available, from a 20in 2kW radome to a 9ft 25kW open array.



KEY FEATURES

- Full screen Radar (PlanView)
- Radar overlay
- SplitScreen mode
- Customisable toolbars and nav console
- Off-centering Radar mode
- Auto-ranging, Auto-gain, Auto-sea clutter
- Pulse Control
- Double speed mode (Admiral only - requires 24V supply)
- Complete ARPA, MARPA and AIS support (Admiral only)
- Multi-monitor Radar viewing (Admiral only)
- GlassBridge network support for Radar (Admiral only)
- Radar info panel in NavView (Admiral only)
- Customisable vessel scaling (Admiral only)
- Track line colouring using NMEA data (Admiral only)

SUPPLIED WITH

Radar antenna, IR2 Black Box, VNS or Admiral navigation software, 10m radar cable, Ethernet crossover cable

ORDER CODE RADOME 2kW 20in WITH VNS - ZNOBNTHRP148B

ORDER CODE RADOME 4kW 25in WITH VNS - ZNOBNTHRP001

ORDER CODE OPEN ARRAY 4kW 3.5ft WITH VNS - ZNOBNTHRP002

ORDER CODE OPEN ARRAY 4kW 4.5ft WITH VNS - ZNOBNTHRP003

ORDER CODE RADOME 2kW 20in WITH ADMIRAL - ZNOBNTHRP150

ORDER CODE RADOME 4kW 25in WITH ADMIRAL - ZNOBNTHRP053

ORDER CODE OPEN ARRAY 4kW 3.5ft WITH ADMIRAL - ZNOBNTHRP054

ORDER CODE OPEN ARRAY 4kW 4.5ft WITH ADMIRAL - ZNOBNTHRP055

**CONTACT US -
SEE BACK PAGE**

A closer look...

The Tool Palette - Navigation made simple

What sets MaxSea apart from other navigational software is its ease of use - the software is controlled via a simple 'tool palette'; which is permanently displayed on the screen, and gives direct access to 90% of MaxSea's functions. The tool palette is very user friendly and easy to use :

MOB button		
		Track on/off button
Zoom In		Zoom Out
Chart Scale tool		Hand tool
Compass tool		Bearing tool
Route Plan tool		Waypoint tool
Plotting tool		Insertion tool
		Position Modification tool
Deleting tool		Scissor tool
Mark Info tool		Object Info tool
Plotting Object Type tool		Plotting Icon tool
Font Size		Plotting Colour
Plotting Line Width		Plotting Pattern
Full Screen Display		Adjust Brightness (Day/Dusk/Night)

MOB button - Activate man overboard function

Track on/off button - Start and to stop tracking

Zoom in/out - Zoom the chart view in/out

Chart Scale tool - Change the chart scale

Hand tool - Pan/scroll charts

Compass tool - Calculate compass/true headings and measure distance

Bearing tool - Take a bearing

Route Plan tool - Plan your route

Waypoint tool - Plot waypoints and routes

Plotting tool - Plot marks, lines, areas, or text based on plotting choices

Insertion tool - Insert a waypoint or a point

Position modification tool - Select and move any object, point or waypoint

Deleting tool - Remove unwanted information

Scissor tool - Cut a line in two

Mark Info tool - Select and get information about a mark

Object Info tool - Select and get information about a series of objects

Plotting Object Type tool - Choose plotting object type

Plotting Icon tool - Select plotting icon/symbol

MAXSEA NAVIGATOR+ Marine Navigation Software

For yachtsmen who appreciate the benefits of having a PC onboard and who don't want to invest in a stand-alone chart plotter, MaxSea is the solution. The preferred navigation software for the long distance cruiser or serious racer, this very powerful yet easy to use system will dramatically improve the efficiency of your voyages and give you the peace of mind of added safety.

MaxSea is far more powerful than a plotter but just as easy to use. Quickly access the maximum amount of information with a glance. Program unlimited waypoints and routes. It offers unparalleled chart compatibility, both raster (Mapmedia, ARCS, Seafarer, Maptech, NDI, Softchart) and vector (S57, C-Map 93 and NTPC) formats.

The basic package has a full range of features. For more specialised functions, additional modules can be added.

KEY FEATURES

- Seamless electronic chart navigation and plotting
- Unlimited simultaneous user data layer access
- Adjust the size and transparency of the window, show or hide on-chart data
- World tidal height data and tidal current optimisation with Mapmedia Tidal Stream Atlases
- Automated integration of currents into the corrected course
- Navigation logbook with automatic position and NMEA data recording
- AIS compatible
- Chopper geographic GRIB data
- Multiple monitors and network compatible
- Day/dusk/night vision
- Advanced Racing-Pro version available for the serious racer



NEW FOR
2006

ORDER CODE - CALL FOR DETAILS

PERFORMANCE MODULE KEY FEATURES



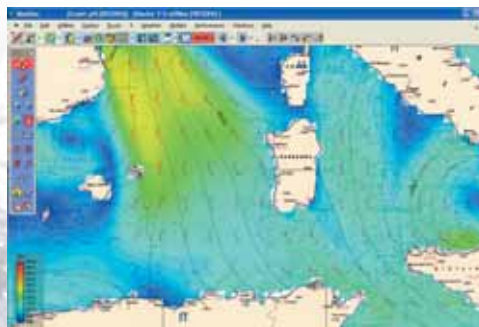
- Graphic display of wind data on the chart
- Laylines shown directly on chart - sail changes and tacking decisions made easy
- Takes into consideration the specific performance characteristics of your boat

ROUTING MODULE KEY FEATURES



- Proven repeatedly by the world's most experienced mariners over the last 15 years
- Uses the isochrones method to automatically calculate routes clear of strong winds or high swells
- Automatic calculation of the safest routes taking into consideration weather forecasts and the boat's specific polar performance characteristics

WEATHER FORECASTING KEY FEATURES



- Receive forecasts via e-mail for the next 15 days, free of charge, and overlay it on to the chart
- Data updated every 6 hours - accurate data helps maximise safety and plan efficient voyages
- Also compatible with precise data from Meteo France and Meteo Consult

MAPMEDIA

Electronic Raster Cartography

High quality seamless display charts designed specifically for use with MaxSea, now in the new .mm2 format. With worldwide coverage, the charts are supplied on CD-ROM by region and contain around 30 charts from large scale to detailed harbour charts.



KEY FEATURES

- Designed on the basis of local paper charts
- .mm2 format offers very high quality graphical data
- Improved zooming capabilities including overzoom

Turn to the back page for pricing and ordering info NOW!

STANDARD HORIZON VM-3500E

Fixed DSC VHF Radio



Rugged submersible DSC VHF radio. Features oversized knobs for easy adjusting of Volume, Squelch, channel changing and moving through radio and Digital Selective Calling functions. The 560mm internal speaker is loud enough to be heard over engine and background noise.

The large display can display channel names, DSC call information and GPS position with Speed Over Ground and Course Over Ground. The radio also has the capability to poll and display another vessel's position on the VHF display, or also on the display of any current Standard Horizon chartplotter.

It can be connected to a CMP25B which operates as a fully functional second station and intercom. The VM-3500E also has a 30W loud hailer with 4 pre-programmed fog signals and listen back.

KEY FEATURES

- Submersible (IPX7 front panel)
- Independent Ch70 receiver for continuous DSC monitoring
- Large illuminated alphanumeric display and keypad
- Fistic with channel selection and Ch16/Ch9 keys
- Channel name display (12 character)
- Versatile user programmable scanning, priority scan and Dual Watch
- Single button Ch16 and Ch9 access
- Voice scrambler option

ALSO CONSIDER

- Icom M601
- Raymarine Ray240E
- Simrad RS86/RS87

ORDER CODE VM-3500E - ZSTAVM-3500E
ORDER CODE CMP25B - ZSTACMB25B

STANDARD HORIZON CMP25B RAM+ Second Station Microphone

This advanced remote has an oversized LCD display and backlit keys. It operates as a second station to the VM-3500E allowing full control of the VHF at the flybridge, in the cockpit, tower or location of your choice.



KEY FEATURES

- Large, clear backlit display
- Submersible
- Remotely control all VHF functions including PA, foghorn and Digital Selective Calling
- Inbuilt distress alert button
- Display shows channel names and repeats GPS information

SUPPLIED WITH

Bulkhead socket assembly, mounting clip

ORDER CODE - ZSTARAM+

STANDARD HORIZON HX270E Waterproof Handheld VHF Radio

This compact, rugged submersible handheld VHF features all International, USA and Canadian channels and a highly legible LCD display with an automatic backlight. The preset key allows you to recall the 8 most frequently used channels. Standard Horizon are so confident of the HX270E's waterproof integrity and reliability that they are offering a three year no quibble free of charge "repair or replace" guarantee if it fails for any reason during that period.

KEY FEATURES

- Large, clear backlit display
- Dual Watch
- Submersible
- Battery charge level indicator
- 1400mAh NiMH battery provides a 16-hour duty cycle between charges
- Standard three year guarantee

SUPPLIED WITH

Alkaline battery tray, 1400mAh NiMH battery pack, 12v overnight charger, mains adaptor and belt clip

OUR VERDICT

This is a popular, competitively priced handheld VHF built to a very high standard. Its rugged design, large display and features make it one of our recommended buys.

ORDER CODE - ZSTAHX270E



Find out more...

Geographic Datums and Electronic Charts

Geographic datum is a frame of reference used by cartographers to define a chart's grid of coordinates. The datum can have a significant impact on navigational accuracy.

A chart is really a "projection", converting the earth's spherical surface to a flat drawing. Most charts are drawn to a Mercator projection, on which latitude and longitude lines are parallel. The cartographer's job is complicated in that the earth's surface is actually an irregular ellipsoid which is larger in diameter at the equator than at the poles. For that reason, cartographers have developed datums to approximate this shape. These models must also reflect the local variations caused by the irregular surface of the earth.

Through the centuries, cartographers have used a variety of datums to create charts and maps. This usually doesn't pose a problem, as long as all of the charts of a given area use the same datum - there are scores of such regional datums. In recent times the geographic community has attempted to develop standardised worldwide datums to provide a universal system of coordinates. These datums have been refined as cartography has improved.

In the USA, NOAA has been gradually transitioning from the old North American Datum 1927 (NAD 27) to the newer World Geodetic System 1984 (WGS84). Differences between the two may range from 40 metres in Florida to 150 metres in Maine. In other parts of the world, charts are based on other formats such as WGS72 or regional datums. GPS uses WGS84 as its global reference.

Why is the correct Chart Datum important?

Matching the GPS and chartplotter to the datum used in the chart card will ensure that your position is shown correctly on the chartplotter screen. Otherwise your boat's position may be shown up to several hundred metres away from where it actually is.



Standard Horizon

Chartplotters

WHERE ARE THE PRICES?
TURN TO BACK PAGE

STANDARD HORIZON CP175C

5.75in Chartplotter



Great value 5.75in 256 colour chartplotter offering the features and display quality of much higher priced units. The unique "ShuttlePoint" cursor control knob makes it simple to operate. Compatible with C-Map MAX and NT+ cartography. If connected to the VM-3500E VHF radio, it can also plot DSC Distress Alert position data directly on the chart. Connect the new FF520 Fishfinder module to convert the CP175C into a fully featured chartsounder. It is also compatible with the Weatherdock AIS receiver and will plot vessel positions onto the chart.

KEY FEATURES

- Easy to use
- Celestial information
- User configurable data fields
- WAAS, EGNOS & MSAS ready



- Port Services and detailed tide information
- PC upload and downloading of Marks, Waypoints & Routes with optional C-Map Planner software
- 3 year warranty

SUPPLIED WITH

12 channel GPS, mounting bracket, flush mount kit

ORDER CODE - ZSTACP175C

STANDARD HORIZON CP1000C

10.4in Chartplotter



If you like the great features and unbeatable price of the CP175C but want a bigger display, then the CP1000C is the answer with its superb 10.4in sunlight-viewable TFT 256 colour screen. Compatible with the new FF520 Fishfinder module, VM-3500E VHF and Weatherdock AIS receiver, it's also radar ready and will integrate with the new Standard radar antenna due out later this year - call for details.

KEY FEATURES

- 10.4in sunlight viewable TFT colour display

SUPPLIED WITH

12 channel GPS, mounting bracket, flush mount kit



ORDER CODE - ZSTACP1000C

STANDARD HORIZON FF520

Fishfinder Module



New black box fishfinder module that can be added to the CP155C, CP175C or CP1000C chartplotters, transforming them into combination Chartsounders with split screen display.

KEY FEATURES

- Dual frequency 50/200kHz
- Fish symbols or coloured echo
- Up to 4 x zoom
- White line helps distinguish between fish and the seabed
- Inbuilt Sensitivity Time Control reduces or eliminates surface clutter
- Fish alarms
- Choice of transducers - Xducer ID detection system automatically selects the power output and configures the parameters to suit the transducer

SUPPLIED WITH

Transducer supplied separately and must be specified

ORDER CODE - ZSTAFF520

STANDARD HORIZON CP155C

5in Chartplotter



Great value 5in 256 colour sunlight viewable GPS Chart Plotter offering all the features of the CP175C but in an ultra-compact unit ideal for smaller boats.

KEY FEATURES

- Easy to use
- Celestial information
- WAAS, EGNOS & MSAS ready
- Port Services and detailed tide information
- Compatible with new FF520 Fishfinder module
- Compatible with Weatherdock AIS receiver
- Compatible with VM-3500E VHF radio
- 3 year warranty



SUPPLIED WITH

12 channel GPS, mounting bracket, flush mount kit

OUR VERDICT

A great little plotter at a great price

ORDER CODE - ZSTACP155C



Find out more...

About C-Map MAX -

C-Map

pages 36-39

Turn to the back page for pricing and ordering info NOW!

ICOM IC-M71Euro**Handheld VHF Radio**

Powerful, compact new VHF with 6 watts power output for extended range and a high capacity 2000mAh Li-Ion battery pack.

KEY FEATURES

- Up to 16 hours operation
- Waterproof construction
- 2-step power saver
- 70 programmable channels
- Voice scrambler version available
- Hands-free operation with optional headset
- Optional speaker mic


**NEW FOR
2006**
SUPPLIED WITH

Battery charger, mains adaptor, belt clip, lanyard

ORDER CODE - ZICOM71**ICOM IC-M1EuroV****Handheld VHF Radio**

Features include self test, private channel capability plus an accessory socket to allow an optional waterproof speaker mike to be connected. Supplied with 1600mah Li-ion battery as standard.

KEY FEATURES

- Waterproof
- Backlit display and keys
- Key lock function
- Microphone socket
- Lithium ion battery pack
- Optional waterproof speaker mic

SUPPLIED WITH

Li-Ion battery pack, charger, belt clip and handstrap

ORDER CODE - ZICOM1V.006**ICOM IC-M31****Handheld VHF Radio**

Entry level handheld VHF. The IC-M31 is a value-for-money package that is designed for reliable, simple and safe operation. Featuring a one-piece, die-cast aluminium chassis and an ultra-durable polycarbonate case it comes as standard with a long lasting Li-Ion battery pack and rapid desktop charger.

KEY FEATURES

- Large backlit display and keypad
- One-touch channel selection
- TAG scanning
- Normal/priority scan selection
- Dual/tri watch
- Self-check diagnostic feature
- 2 step power saver function
- Keypad lock
- Wide range of accessories

SUPPLIED WITH

Li-Ion battery pack, desktop rapid charger, belt clip and hand strap

OUR VERDICT

Icom quality and performance at a competitive price - a great little radio!

ALSO AVAILABLE

- **IC-M31 Sport** - This budget version offers the same features and functions, but is supplied only with the AA cell battery case, making it an ideal radio for occasional or emergency use.

ORDER CODE M31 - ZICOM31**ORDER CODE M31 SPORT - ZICOM31-DRY**

**BEST
SELLER**

**HOT
PRODUCT!!**
**ICOM IC-M87****Handheld VHF/PMR Radio**

Tough, waterproof radio with large, backlit LCD. Simple to operate, even when wearing gloves. Self check function monitors unit temperature and battery voltage.

KEY FEATURES

- Simple add/delete TAG scanning operation
- Automatic scan function
- 2 step power saver
- 5 Watts output power
- 22 free PMR channels
- Key lock function
- Optional AA battery case
- Optional speaker mic
- Wide range of audio accessories

SUPPLIED WITH

Li-Ion battery pack, charger, belt clip and hand strap

ORDER CODE - ZICOM87.001**ICOM PCR1500****PC Receiver**

A powerful PC-based radio scanner that connects to your PC via USB, providing wide frequency coverage from 10kHz to 1300MHz with SSB, CW, AM, FM and WFM modes. Ideal for receiving weatherfaxes etc if you don't have an SSB transceiver.

KEY FEATURES

- Choose the screen you want to operate from - Communication Receiver, Component Style, Compact Screen
- Monitor 25 channels on the screen at a glance
- Unlimited number of memory channels

ALSO AVAILABLE

- **R1500** - connect to PC or control via remote head, high speed scanning (60 channels/sec), various noise reduction features which provide clearer receiver sound



**NEW FOR
2006**

Don't forget...
V'Tronix Antennas & Fittings

You've bought a new radio, but is your antenna past it? Remember - a poor antenna = poor performance!

YHK

Stainless Steel Whip + Hawk wind indicator

- Low windage
- 20m cable
- Solderless connection
- PL259 plug

**YWX Whipflex**

Stainless Steel Whip

- Low windage
- 20m cable
- Solderless connection
- PL259 plug

**HA156C Heliflex**

Stub Antenna

- Low windage for racing yachts
- Helical construction
- 20m cable
- PL259 plug
- No groundplane required

**YRR Raider**

RIB Antenna

- Specially designed for rigid inflatable boats
- Short helical design to avoid snagging
- Solderless connection
- 6m cable
- PL259 plug

**RV120 / RV120-P**

1.4m GRP Antenna

- Ideal for smaller power boats and workboats
- 6m cable
- PL259 plug
- Stainless steel ferrule (RV120)
- Polycarbonate ferrule (RV120-P)

**RV240**

2.4m GRP Antenna

- Ideal for larger power boats and small ships
- Strong fibreglass tube
- 6m cable
- PL259 plug
- Stainless steel ferrule

**AA20**

Active Antenna

- Receive only
- For Navtex, Weatherfax AM/SSB receivers etc
- 20m cable
- BNC plug
- Use with AAX1/AAX5

**AAX1**

Power Supply

- Use when DC power is not supplied by the receiver
- 10-30v DC
- 1m cable
- BNC jack

**AAX5**

Power Supply / Splitter

- Use when DC power is not supplied by the receiver
- Supply up to 5 receivers with one antenna
- 10-30v DC
- 1m cable
- BNC jack

**WS200-P**

Extension Loudspeaker

- Surface or flush mount
- Weatherproof, UV resistant
- Suitable for 4 or 8 ohm systems

**ARMNT-P**

Ratchet Mount (Nylon)

- 4-way swivel mount
- Deck or side mount
- Quick release lever
- UV resistant
- Suitable for antennas less than 2.4m

**ARMNT**

Ratchet Mount (S/Steel)

- 4-way swivel mount
- Deck or side mount
- Quick release lever
- Suitable for all powerboat antennas

**ORDER CODES - CALL FOR DETAILS**

ICOM IC-M505EURO

Fixed DSC VHF Radio

New all-in-one DSC VHF with large dot matrix LCD, rotary volume, squelch and channel select knobs and fistic. The IC-M505 is compatible with new HM-162 Commandmic enabling full function dual station control of its DSC functions, intercom and other remote functionality including foghorn and a loudhailer.

KEY FEATURES

- Advanced IPX8 waterproof protection
- Large backlit dot matrix LCD display
- Full function Class D DSC
- NMEA GPS input/output
- Dual / Tri Watch
- Fast Scan
- 25w hailer and auto fog horn facility



NEW FOR 2006

SUPPLIED WITH

Fistic, power cable

ORDER CODE - CALL FOR DETAILS

ICOM IC-M421EURO

Fixed DSC VHF Radio

Compact, rugged all in one DSC VHF radio. Waterproof construction with large clear display. Position Request and Position Report functions allow you to exchange ship's position information. The Polling function checks whether a specific ship is in communication range.

KEY FEATURES

- Dual/Tri watch & multiple scan
- Up to 70 programmable channels
- Large memory - 100 MMSI directory and up to 40 received DSC messages (20 distress and 20 other calls)
- Programmable channel comment
- External speaker connection
- 2-step power saver function
- Low voltage indicator for low battery alert



SUPPLIED WITH

Fistic, power cable

ORDER CODE - ZICOM421

ICOM HM-162 COMMANDMIC III

Full Function Remote Fistic

Unique new handheld fistic with LCD display and multi jog dial giving full control of the new IC-M505Euro including its DSC functions, intercom and other remote functionality including foghorn and a loudhailer.

This allows the user to operate the transceiver from many areas of the vessel such as the deck or fly bridge with ease. The Commandmic fits in the palm of your hand comfortably and the multi jog dial enables easy and intuitive operation.

KEY FEATURES

- Large backlit dot matrix LCD display
- Distress Alert button on rear of unit
- Large 45mm speaker give loud, clear sound
- Compatible with IC-M505
- Waterproof to IPX8



NEW FOR 2006

ORDER CODE - CALL FOR DETAILS

ICOM IC-M401EURO

Fixed DSC-Ready VHF Radio

Compact and easy to use, ideal for anyone wanting to upgrade to DSC at a later date or where space is at a premium. Rated JIS-7 submersible and perfect for small boats like RIBs, where water ingress has been a traditional problem. To upgrade to DSC, simply add the DS100 Controller.

KEY FEATURES

- Scrolling 10-character channel name
- Normal, priority and tag scanning functions
- 22 memory channels
- Dual watch and tri-watch function
- Waterproof



SUPPLIED WITH

Fistic, power cable

ORDER CODE - ZICOM401.001

ICOM IC-M601EURO

Fixed DSC VHF Radio

Compact, waterproof all in one DSC VHF with large dot-matrix display.

KEY FEATURES

- NMEA Input/Output
- Dual/tri-watch function
- Auto fog horn function
- 22 Watt 2-way Hailer capability
- "TAG" scanning function
- Optional Voice Scrambler
- Simultaneous connection of up to two Commandmics is possible



ORDER CODE - ZICOM601.001

ICOM IC-M801-E / IC-M801GMDSS

SSB Transceiver

Powerful SSB radio system which meets Class E (IC-M801E) and GMDSS Class A (IC-M801GMDSS) specifications and features inbuilt DSC facilities. The main transceiver unit can be installed out of sight, while operation is via a compact remote control panel with a large, easy to read display. Two large bank and channel dials make channel selection fast and easy. 1355 ITU channels, up to 16 banks of user channels, 17 banks of ITU channels - each with up to 20 channels per bank. Inbuilt modem for email and data services. NMEA in for GPS, RS-232C port for PC input. The remote control can be integrated with the IC-M601 or IC-M505 VHF radio to form a complete MF/HF/VHF communications station.



NOW UK TYPE APPROVED!

KEY FEATURES

- Digital signal processor
- 125W (PEP) output
- Wide band receive coverage (0.5 – 29.9999MHz)
- VFO mode option
- Headphone jack, RS-232C/NMEA input, GPS input, printer output and D-SUB connector for NBDP/FSK terminal
- IC-M801GMDSS meets MED96/98/EC wheelmark requirements for SOLAS
- Available with fistic or telephone handset
- Optional AT-141 automatic antenna tuner

NEW FOR 2006

ORDER CODES - CALL FOR DETAILS

THRANE & THRANE FLEET SERVICES

Voice, Fax, Email and Internet Access

A range of satellite communication systems offering voice and data communications. Three models are available to suit most applications, from small boats to commercial shipping. Support for all products is available through the Thrane & Thrane worldwide network of Fleet Service Centres.

FLEET 33 KEY FEATURES

- Ideal for smaller boats
- Extensive spot beam coverage for fax, email and MPDS (always on connection to the Internet)
- 9.6kps fax/data, 4.8 kbps Mini-M voice and 64kps (downstream), 28kps (upstream) with up to 40kps using data compression
- Compact antenna is only 35x35cm and weighs less than 4.5kg

FLEET 55 KEY FEATURES

- For where a large antenna isn't practical, but high speed data is required
- 64 kbps ISDN or MPDS
- Stabilised antenna weighs only 18kg

FLEET77 FEATURES

- Designed for large commercial operations
- Can be linked directly to standard desktop phones, payphones, DECT phones, and fax machines
- Cost effective global voice, fax, email, 64kps ISDN and MPDS
- Vessels can be constantly linked with onshore management systems via the internet, including full e-mail services
- Global voice distress with pre-emption



ORDER CODE FLEET55 - ZTHRTT3088A
ORDER CODE FLEET55 - ZTHRTT3086A
ORDER CODE FLEET77 - ZTHRTT3084A

THRANE & THRANE TT-3026S

Mini-C System

The world's first Inmarsat Mini-C system, comprising transceiver, antenna, and 12-channel GPS receiver in a single unit. The compact design and power conserving features make it very attractive for tracking and e-mail applications. It ensures fast and reliable transfer of vital information, e.g. position reporting, data monitoring, messaging, loading and unloading information, route planning, etc. It also features an advanced sleep mode function and includes a number of port options supporting interfacing requirements as well as six configurable I/O pins which can be connected to remote sensors, relays, or switches.

KEY FEATURES

- Extremely low power consumption
- Send and receive internet, e-mail, telex, Inmarsat-C, X-25, SMS (depending on applications)
- Optional message terminals available if no PC used
- Type approved for maritime applications
- Receives Enhanced Group Call (EGC) messages for SafetyNet and FleetNet

SUPPLIED WITH

EasyMail communication software for Windows



ORDER CODE - ZTHRTT3026S

IRIDIUM IMF1000

Fixed Iridium Satellite Phone

Designed for installation on any size of vessel, comprises transceiver, intelligent handset and small marinised antenna. Offers voice and low speed data (9.6kps when compressed). Ideal for crew calling use with pre-paid scratch cards.



KEY FEATURES

- Global coverage
- Voice and data(email) compatible
- Rugged construction and lightweight waterproof antenna
- Flexible installation - up to 50m between handset & transceiver, up to 30m coax cable available
- RJ11 port for secondary analogue telephone - ideal for crew calling
- Requires 12/24Vdc power input

SUPPLIED WITH

Antenna, handset. Antenna cable sold separately (10, 15, 20 & 30m sizes)

ORDER CODE - ZIRIAS23799

IRIDIUM 9505A

Iridium Satellite Phone

Handheld telephone in a rugged case, can also be used with an external antenna for below deck voice and data (email) calls. Ideal for emergency storage and/or routine use.

KEY FEATURES

- Headset/handsfree accessory
- Two way SMS facility
- Signal strength and battery meters
- Data capable via optional data kit accessory
- Voice mail and call forwarding
- Includes lightweight external antenna (1.5m cable)
- Marine antenna can be added for semi-permanent installation

SUPPLIED WITH

Battery, AC charger, DC car charger, leather case, handsfree, case, external antenna



ORDER CODE - CALL FOR DETAILS



THURAYA DSL

Satellite Internet Access

This compact unit offers a shared high speed connection with charging based on data usage, not time on line. Comprising a compact satellite modem with integrated antenna which connects to the PC via ethernet, the Thuraya satellite gives a coverage footprint from the Baltic to North Africa including all of the Mediterranean.

A ThurayaDSL SIM Card is required to access the service.



KEY FEATURES

- Reliable high speed connectivity
- Up to 144kpbs within the Thuraya coverage area
- Email, web, e-commerce, FTP and VPN access
- Optional maritime antenna for onboard installation
- Competitive volume based usage charging regardless of connection duration
- Unlimited tariff available
- Postpaid and prepaid subscriptions available
- Light, compact, portable and user friendly
- Public static IP address available
- Online billing enquiry
- Compatible with Windows 98/ME/NT 4.0 (service pack 3)/2000/XP and Mac OSX 10.1 or later

HOW WE DO BUSINESS



WHY NO PRICES?

People often ask why we don't print prices in our Buyer's Guide, the reason is simple -

- The Buyer's Guide comes out once a year, but prices change daily.
- At any one time there will be a number of special offers or mega deals on particular items.
- Some of our suppliers don't like us advertising low prices as it upsets the other dealers who don't have our volume and can't compete!
- We can provide you with our complete price list as an Acrobat PDF file on request - for the latest prices and details of special offers,
 - **email us** on sales@cactusnav.com or
 - **call us** on 020 7493 1115



PAYMENT

We accept the following methods of payment - cash, cheque and most credit and debit cards -



- Cactus will not charge your credit/debit card until the goods are shipped unless it is a highly specialised item, in which case we may ask for a small deposit at the time of order.



SOME IMPORTANT ADVICE PLEASE READ

Cactus work very hard to provide a high level of customer service and if you follow our simple advice we can ensure that your shopping at Cactus is pleasant and stress free.

- Please allow a reasonable time for ordering and delivery - although we keep plenty of stock in our warehouse many marine electronics manufacturers find it difficult to predict demand, so delivery times can vary, particular during the season. Cactus will always tell you if the product you are buying is about to change, so there is no need to leave ordering to the last minute.
- Buy PC software at least 2 weeks before you plan to use it. Loading and configuring marine software is generally not straightforward, often there are issues with unlock codes and drivers that can take a few days to resolve, plus you might need to order additional PC peripherals to make sure everything functions correctly.
- Because of the number of PC operating systems, navigational applications, and electronic chart formats available, Cactus is unable to provide telephone support for marine software. However, Cactus provide a full in-house commissioning and setup service, please ask the sales team for details.
- When calling please give us plenty of information about your boat and how you intend to use the equipment, even if you are just phoning up for a price. This provides a useful check to ensure you are purchasing the right product for you.
- If you are ordering accessories or electronic charts, please check compatibility with our sales team before ordering. Formats and specifications change all the time so it is worth double-checking even if you think you know what you need. This will avoid the trouble and expensive of returning items that were incorrectly ordered.
- If you have any comments or feedback on our service or the products please email me directly (andrew@cactusnav.com) and I will do my best to help.



AFTERSALES SUPPORT AND WARRANTY

If, having read the manual and downloaded our online fault guide you require further advice from our team you are welcome to call.

- So that we can get to the bottom of the problem quickly, please make a careful note of the make and model of the equipment concerned and how you have it installed
- Please note that because of the huge range of equipment we sell we may have to research the problem and call you back
- Again, to avoid unnecessary stress for you and sales team, please ensure that you are fully familiar with your equipment well before you want to use the boat.
- Try to check that your electronics systems work before the boat goes back in the water - manufacturers are inundated with warranty and returns work at the start of the boating season. There is nothing more infuriating than having to wait for kit to be repaired when you want to use it!
- Manufacturers' guarantees vary considerable from 1 year "return to us" cover, up to 3 years on site warranty. Our sales team will be happy to confirm the manufacturer's warranty so you are clear on the level of support you can expect in the future.





Cactus™

Navigation & Communication

CALL US NOW ON 020 7493 1115 • EMAIL SALES@CACTUSNAV.COM

Cactus Navigation & Communication Ltd
Lower Ground Floor
39A Curzon Street
London W1J 7UA
tel : 020 7493 1115
fax : 020 7493 1119
email : sales@cactusnav.com
web : www.cactusnav.com

(Open Mon-Fri 9-5pm)

PERSONAL CALLERS BY APPOINTMENT

Customers are always welcome to come and visit our showroom in the West End, however please phone first to let us know you are coming - that way we can ensure the equipment you want to see is available and that an expert is on hand to discuss your requirements.

Although we have a fully equipped showroom with a good selection of working products we are not a traditional High Street shop, hence the reason we are closed at weekends. However, because we are office based we can operate in Central London and still offer the lowest prices to you.



Cactus is a member of the
British Marine Federation and the
British Marine Electronics Association

RAYMARINE 45 STV

Cost effective satellite TV onboard - see page 10

