

See Us At The
Southampton
Boatshow
On Stand G093

Contact Details:

Marine Electronic
Services Ltd

HEAD OFFICE:
Marine House
City Business Park
Easton Rd
Bristol. BS5 0SP

TEL 01179 114111

FAX 01179 556289

www.mesltd.co.uk

E-MAIL
sales@mesltd.co.uk

POOLE OFFICE:
Unit 2
Vitrage Technical Park
Witney Road,
Nuffield Ind Estate
Poole. BH17 0GL

TEL 01202 666066

FAX 01202 661169

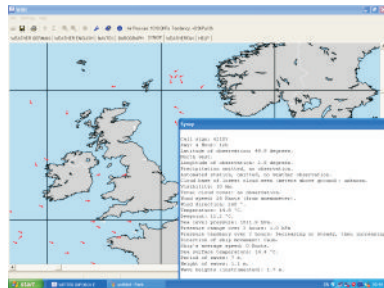
Morer WIBE Weather Box

- Self contained black box receiver with USB PC connection
- Displays information on your PC screen with no additional software to install - works through internet explorer
- Receives HF Fax, NAVTEX (490 & 518KHz), SYNOP and sea weather forecasts from DWD
- Built in electronic barograph
- Memory card slot to store images for viewing on PDAs or monitor
- Low power consumption
- Requires connection to external active antenna (optional) or longwire/insulated stay



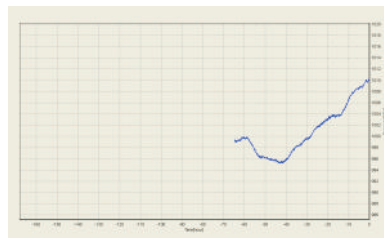
The WIBE is a multi function weather receiver capable of displaying NAVTEX weather and nav information, RTTY sea weather forecasts from the DWD, SYNOP meteo information and HF weather fax images. It also incorporates a precision barograph. It interfaces with a notebook or desktop PC through a simple USB connection and its images and data can be viewed through internet explorer - even though no connection to the internet is required to gather the information.

Information comes from reliable and "free to air" HF/short wave weather stations with an excellent European and Mediterranean footprint



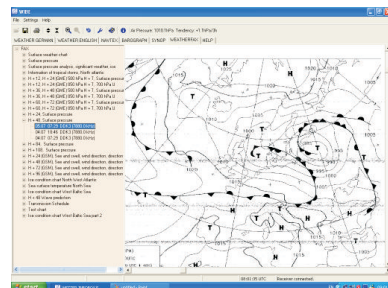
SYNOP Decoding

WIBE will decode SYNOP information available from key weather stations and buoys across Europe. Click on the icon and get real time sea state, temperature, pressure and wind information.



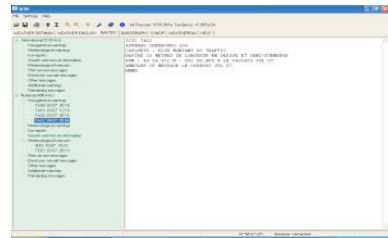
Barograph

View real time atmospheric pressure over a 7 day period thanks to a built-in barograph function - accurate to 0.1hPa.



HF Fax

Pre programmed for reception of HF weather fax data on HF frequencies from 3.8 to 14.5 MHz



Navtex

Reception of NAVTEX messages on 518 and 490 KHz for coastal and offshore weather and navigation information

Typical DWD Sea Weather RTTY Forecast

HIGH 1020 SARDINIA WEAKENING. LOW 1013 SPAIN WEAKENING A LITTLE, STATIONARY. LOW 1003 SYRIA, STATIONARY. LOW 988 WHITE RUSSIA MOVING NORTHEAST SLOWLY. LARGE HIGH FRIDAY 1037 NORTH OF THE AZORES STATIONARY. RIDGE FRIDAY 1025 BRITANNY NEARLY UNCHANGED. LOW FRIDAY 1004/BULGARIA WEAKENING, MOVING EAST. LOW FRIDAY 1008 NORTHERN ITALY MOVING SOUTHEAST.
FORECASTS OF TH, 09.11.2006 00 UTC:
WIND FORCE BEAUFORT, WAVE HEIGHT METRE
GOLFE DU LION (42.2N 4.5E) SST: 19 C
FR 10. 12Z: NW-N 6-7 / 8 3 M //
SA 11. 00Z: NW 7-8 / 9 2 M //
SA 11. 12Z: NW 7 / 8-9 2 M //
SU 12. 00Z: NW 7 / 8-9 2 M //
SU 12. 12Z: NW 8 / 10 3.5 M //
MO 13. 00Z: NW-N 7-8 / 9-10 3 M //
MO 13. 12Z: NW-N 3 / 6-7 1 M //
TU 14. 00Z: S 3-4 / 0.5 M //
TU 14. 12Z: SE-S 4-5 / 0.5 M //
WE 15. 00Z: SE-S 4-5 / 1 M //
WE 15. 12Z: SE 4-5 / 0.5 M //
BALEARIC ISLANDS (39.4N 3.7E) SST: 19 C
FR 10. 12Z: NW 7 / 8-9 3.5 M //

Specifications:

OVERALL DIMENSIONS
OPERATING FREQUENCIES

130 X 45 X 90MM approx
147.3 KHZ
490 KHZ (Navtex)
518 KHZ (Navtex)
3.8-14.5 MHZ (HF Fax)

INTERNAL MEMORY
STORAGE CARD SLOT
DECODING MODES
INTERFACE

4MB
SD/MMC Format
SITOR/RTTY/F1C
USB 1.0 AND 2.0

POWER REQUIREMENTS
ANTENNA REQUIREMENTS

Compatible with Win XP/Vista
12v DC 80-120mA
50 OHM long wire or insulated stay with balun for best results or active antenna system available as an option